

WAAS CH <b>82228</b> <b>W08A</b>	APP CRS <b>082°</b>	Rwy Ldg <b>12000</b> TDZE <b>5354</b> Apt Elev <b>5434</b>
--	------------------------	--

# RNAV (GPS) Y RWY 8

DENVER INTL (DEN)

**▼** For uncompensated Baro-VNAV systems, LNAV/VNAV NA below -25°C (-13°F) or above 47°C (117°F). Simultaneous approach authorized with Rwy 7. DME/DME RNP-0.3 NA. LNAV procedure NA during simultaneous operations. Use of FD or AP providing RNAV track guidance required during simultaneous operations. For inoperative MALSR, increase LNAV Cat C/D visibility to RVR 5500. # RVR 1800 authorized with use of FD or AP or HUD to DA.

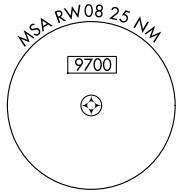
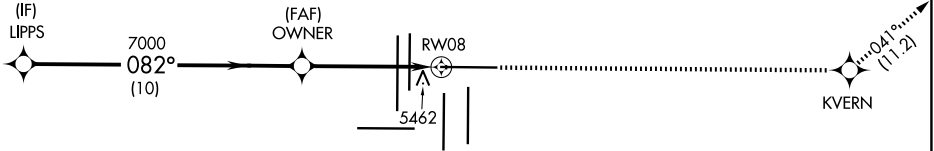
MALSR



MISSED APPROACH: Climb to 10000 direct KVERN and on track 041° to WITNE and hold.

D-ATIS <b>125.6 379.9</b>	DENVER APP CON <b>119.3 307.3 (N)</b> <b>120.35 379.3 (S)</b>	DENVER TOWER <b>132.35 239.275</b>	GND CON <b>121.35 379.175 (W)</b> <b>121.85 377.1 (E)</b>
------------------------------	---	---------------------------------------	---

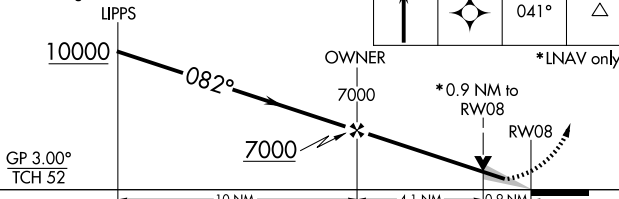
MISSED APCH FIX



## RADAR REQUIRED

ELEV 5434 **D** TDZE 5354

VGSI and RNAV glidepath not coincident (VGSI Angle 3.00/TCH 70).



CATEGORY	A	B	C	D
LPV DA #	5554/24		200 (200-½)	
LNAV/VNAV DA	5833/60		479 (400-1¼)	
LNAV MDA	5720/24 366 (300-½)		5720/35 366 (300-⅝)	

