

SSKII FOUR ARRIVAL (RNAV) 12UN25

SSKII FOUR ARRIVAL (RNAV) Transition Routes

DENVER, COLORADO  
DENVER INTL (DEN)

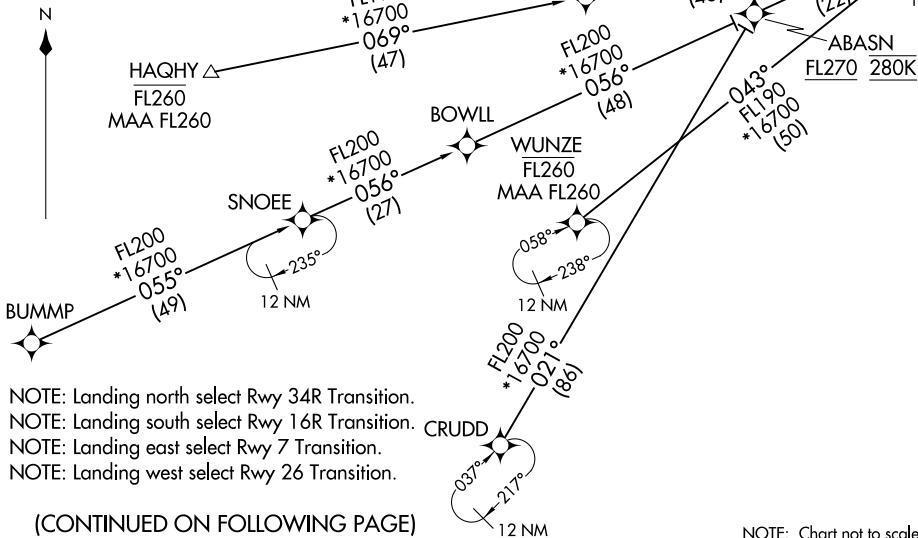
DENVER APP CON  
120.35 379.3  
D-ATIS ARR  
125.6 379.9  
DENVER TOWER  
128.75 273.55 (Rwy 7-25)  
132.35 239.275 (Rwys 8-26, 17L-35R)  
124.3 322.45 (Rwy 17R-35L)  
135.3 351.95 (Rwys 16L-34R, 16R-34L)

RNAV 1 - DME/DME/IRU or GPS.  
RADAR required.

See following page  
for arrival routes

SSKII  
FL220 270K  
FL190  
057° 17000  
\*13800 (12)  
237° 12 NM

NOTE: Jet aircraft only.  
NOTE: Denver Center will issue "descend via" clearance and landing direction.  
NOTE: Expect runway assignment on initial contact with Denver TRACON.  
NOTE: KLOWN, PEEKE, SNOEE, KTOOO, CRUDD, BOWLL, ABASN, and HAMIC Transitions, ATC assigned only.



- ABASN TRANSITION (ABASN.SSKII4)
- BOWLL TRANSITION (BOWLL.SSKII4)
- BUMMP TRANSITION (BUMMP.SSKII4)
- CRUDD TRANSITION (CRUDD.SSKII4)
- HAMIC TRANSITION (HAMIC.SSKII4)
- HAQHY TRANSITION (HAQHY.SSKII4)
- JNETT TRANSITION (JNETT.SSKII4)
- KLOWN TRANSITION (KLOWN.SSKII4)
- KTOOO TRANSITION (KTOOO.SSKII4)
- PEEKE TRANSITION (PEEKE.SSKII4)
- SNOEE TRANSITION (SNOEE.SSKII4)
- WUNZE TRANSITION (WUNZE.SSKII4)

NOTE: Landing north select Rwy 34R Transition.  
NOTE: Landing south select Rwy 16R Transition.  
NOTE: Landing east select Rwy 7 Transition.  
NOTE: Landing west select Rwy 26 Transition.

(CONTINUED ON FOLLOWING PAGE)

NOTE: Chart not to scale.

(SSKII.SSKII4) 25163

AL-9077 (FAA)  
Transition Routes

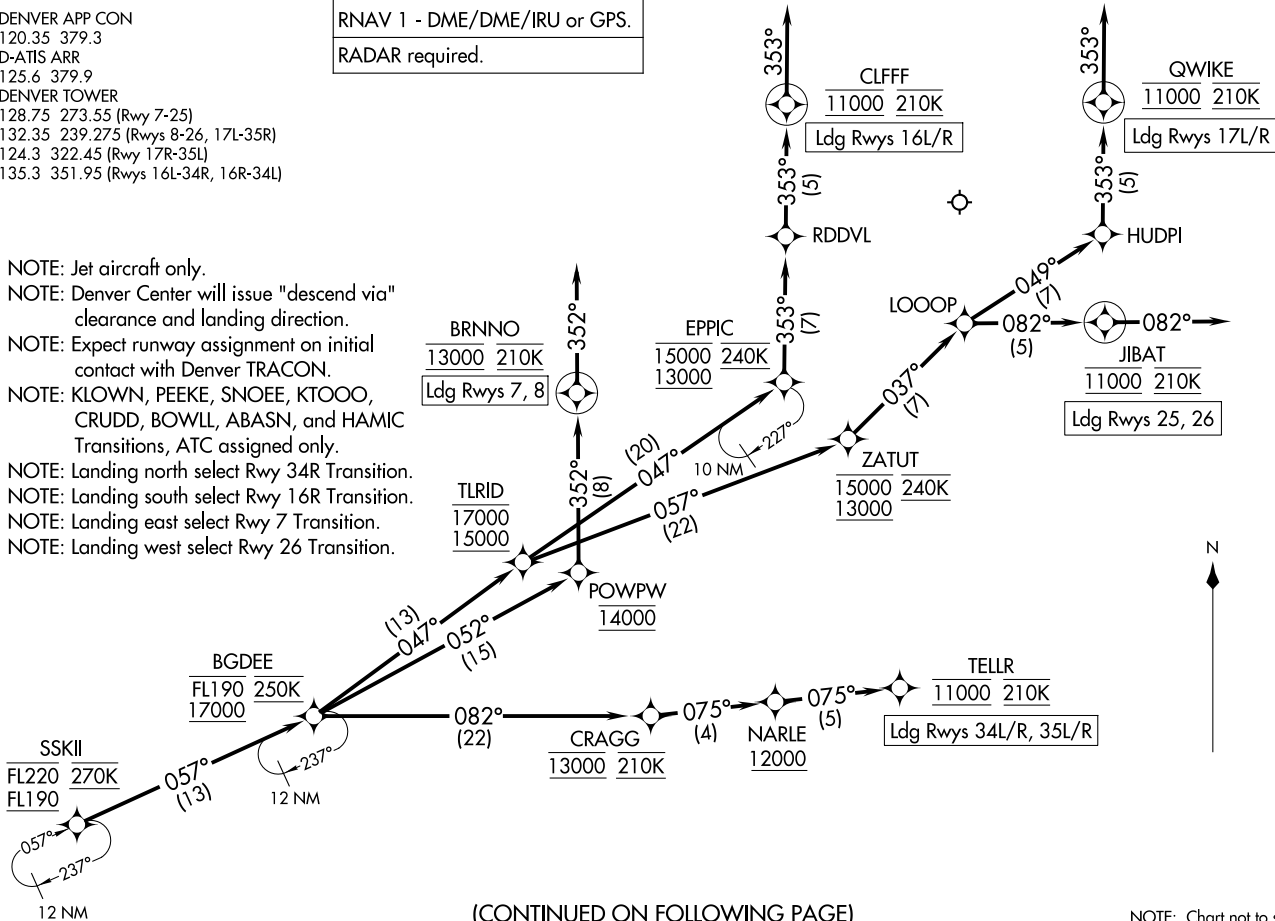
DENVER INTL (DEN)  
DENVER, COLORADO

SSKII FOUR ARRIVAL (RNAV) Arrival Routes  
 (SSKII, SSKII4) 12UN25  
 DENVER, COLORADO  
 DENVER INTL (DEN)

DENVER APP CON  
 120.35 379.3  
 D-ATIS ARR  
 125.6 379.9  
 DENVER TOWER  
 128.75 273.55 (Rwy 7-25)  
 132.35 239.275 (Rwys 8-26, 17L-35R)  
 124.3 322.45 (Rwy 17R-35L)  
 135.3 351.95 (Rwys 16L-34R, 16R-34L)

RNAV 1 - DME/DME/IRU or GPS.  
 RADAR required.

- NOTE: Jet aircraft only.
- NOTE: Denver Center will issue "descend via" clearance and landing direction.
- NOTE: Expect runway assignment on initial contact with Denver TRACON.
- NOTE: KLOWN, PEEKE, SNOEE, KTOOO, CRUDD, BOWLL, ABASN, and HAMIC Transitions, ATC assigned only.
- NOTE: Landing north select Rwy 34R Transition.
- NOTE: Landing south select Rwy 16R Transition.
- NOTE: Landing east select Rwy 7 Transition.
- NOTE: Landing west select Rwy 26 Transition.



(CONTINUED ON FOLLOWING PAGE)

NOTE: Chart not to scale.

SSKII, SSKII4) 25163  
 SSKII FOUR ARRIVAL (RNAV) Arrival Routes  
 AL-9077 (FAA)  
 DENVER INTL (DEN)  
 DENVER, COLORADO

ARRIVAL ROUTE DESCRIPTION

From SSKII on track 057° to cross BGDEE between 17000 and FL190 and at 250K.

LANDING RUNWAYS 7, 8: From BGDEE on track 052° to cross POWPW at 14000, then on track 352° to cross BRNNO at 13000 and at 210K, then on track 352°. Expect RADAR vectors to final approach course.

LANDING RUNWAYS 16L/R: From BGDEE on track 047° to cross TLRID between 15000 and 17000, then on track 047° to cross EPPIC between 13000 and 15000 and at 240K, then on track 353° to RDDVL, then on track 353° to cross CLFF at 11000 and at 210K, then on track 353°. Expect RADAR vectors to final approach course.

LANDING RUNWAYS 17L/R: From BGDEE on track 047° to cross TLRID between 15000 and 17000, then on track 057° to cross ZATUT between 13000 and 15000 and at 240K, then on track 037° to LOOOP, then on track 049° to HUDPI, then on track 353° to cross QWIKE at 11000 and at 210K, then on track 353°. Expect RADAR vectors to final approach course.

LANDING RUNWAYS 25, 26: From BGDEE on track 047° to cross TLRID between 15000 and 17000, then on track 057° to cross ZATUT between 13000 and 15000 and at 240K, then on track 037° to LOOOP, then on track 082° to cross JIBAT at 11000 and at 210K, then on track 082°. Expect RADAR vectors to final approach course.

LANDING RUNWAYS 34L/R, 35L/R: From BGDEE on track 082° to cross CRAGG at 13000 and at 210K, then on track 075° to cross NARLE at or above 12000, then on track 075° to cross TELLR at 11000 and at 210K. Expect ILS or LOC RWY 34L, RWY 34R, RWY 35L, RWY 35R approach.

LOST COMMUNICATIONS: In the event of lost communications prior to runway transition assignment, when DEN is landing south, execute the ILS RWY 16R, when DEN is landing north, execute the ILS RWY 34R.

SW-1, 16 APR 2026 to 14 MAY 2026

SW-1, 16 APR 2026 to 14 MAY 2026