

TOMSN NINE ARRIVAL  
(TOMSN, TOMSN9) 16MAY24

(TOMSN, TOMSN9) 24137  
TOMSN NINE ARRIVAL

AL-9077 (FAA)

DENVER, COLORADO

DENVER APP CON  
119.3 307.3  
APA ATIS  
120.3  
BJC ATIS  
126.25  
CFO ATIS  
119.025  
DEN D-ATIS ARR  
125.6 379.9  
KBKF ATIS  
119.675 259.3  
FNL ATIS  
135.075

HAYDEN  
115.6 CHE  
Chan 103

LARAMIE  
117.6 LAR  
Chan 123

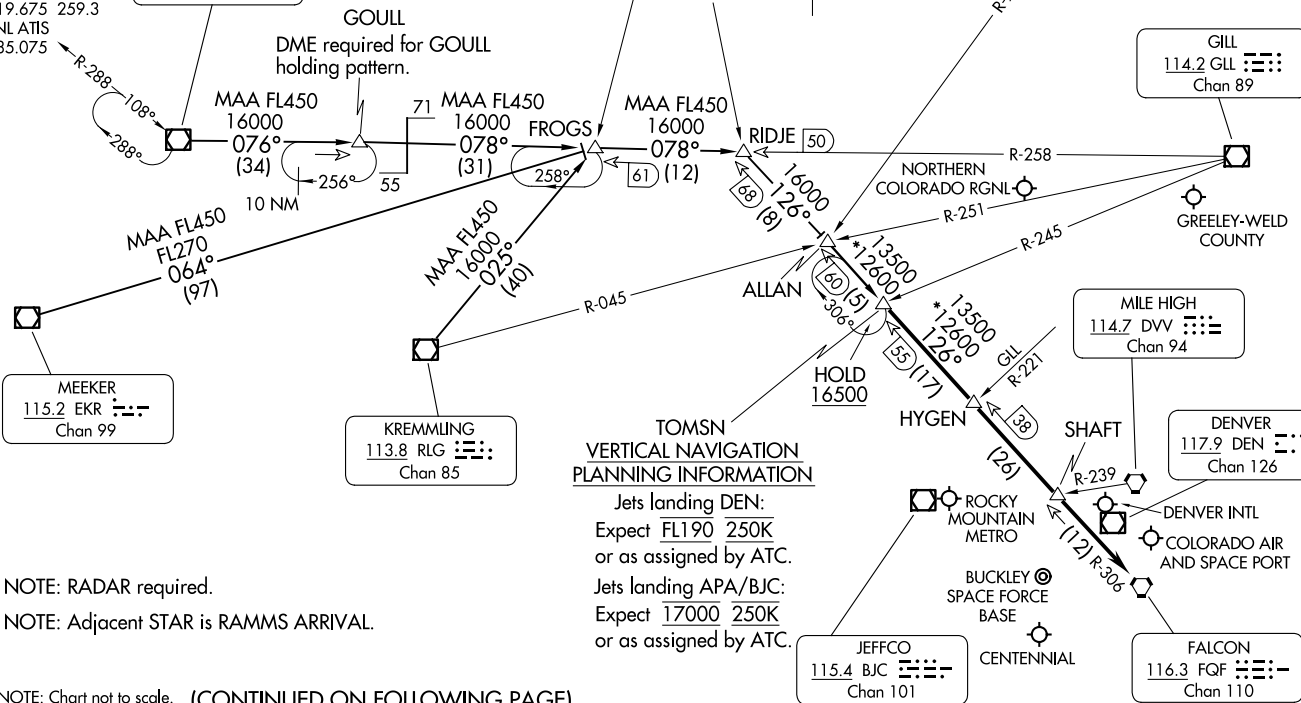
CHEYENNE  
113.1 CYS  
Chan 78

GILL  
114.2 GL  
Chan 89

MILE HIGH  
114.7 DVW  
Chan 94

DENVER  
117.9 DEN  
Chan 126

FALCON  
116.3 FQF  
Chan 110



**TOMSN  
VERTICAL NAVIGATION  
PLANNING INFORMATION**

Jets landing DEN:  
Expect FL190 250K  
or as assigned by ATC.  
Jets landing APA/BJC:  
Expect 17000 250K  
or as assigned by ATC.

NOTE: RADAR required.  
NOTE: Adjacent STAR is RAMMS ARRIVAL.

NOTE: Chart not to scale. (CONTINUED ON FOLLOWING PAGE)

DENVER, COLORADO

ARRIVAL ROUTE DESCRIPTION

HAYDEN TRANSITION (CHE.TOMSN9): From over CHE VOR/DME on CHE R-076 and GLL R-258 to RIDJE, then on FQF R-306 to TOMSN. Thence. . . .

KREMLING TRANSITION (RLG.TOMSN9): From over RLG VOR/DME on RLG R-025 and GLL R-258 to RIDJE, then on FQF R-306 to TOMSN. Thence. . . .

MEEKER TRANSITION (EKR.TOMSN9): From over EKR VOR/DME on EKR R-064 and GLL R-258 to RIDJE, then on FQF R-306 to TOMSN. Thence. . . .

. . . .from over TOMSN on FQF R-306 to FQF VORTAC. Expect RADAR vectors to the final approach course at or before FQF VORTAC.

SW-1, 16 APR 2026 to 14 MAY 2026

SW-1, 16 APR 2026 to 14 MAY 2026