

VOR/DME LIN <b>114.8</b> Chan <b>95</b>	APP CRS <b>012°</b>	Rwy Idg <b>3401</b> TDZE <b>1690</b> Apt Elev <b>1694</b>
---	------------------------	---

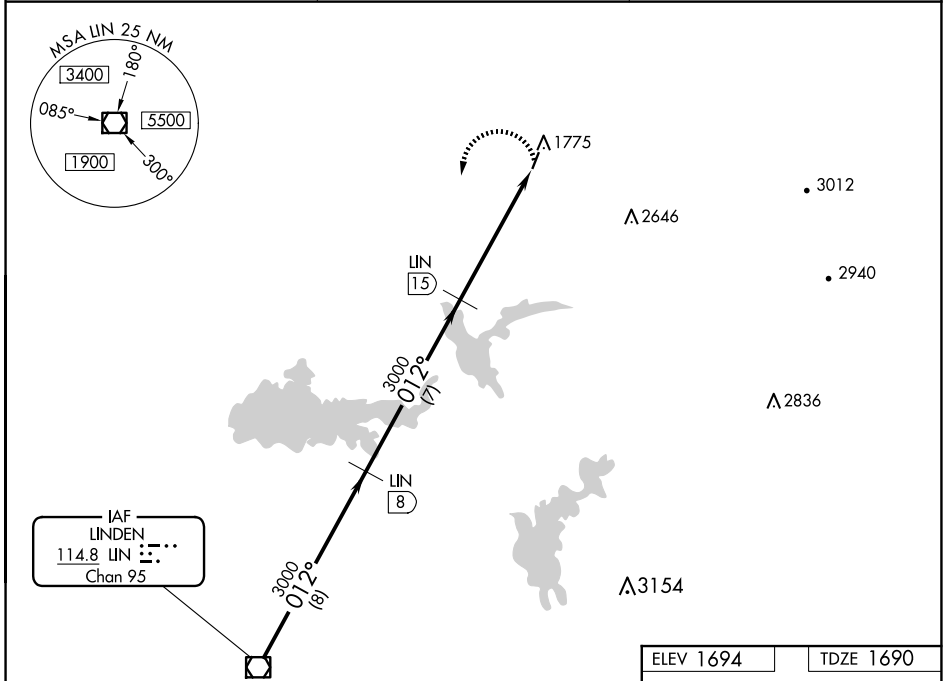
# VOR/DME RWY 1

WESTOVER FLD AMADOR COUNTY (JAQ)

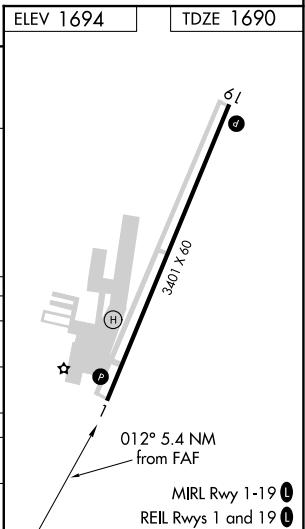
**NA** If local altimeter not received, use Sacramento Exec altimeter setting. Circling Rwy 19 NA at night.

MISSED APPROACH: Climbing left turn to 3000 via LIN R-012 to LIN VOR/DME.

AWOS-3 <b>121.125</b>	NORCAL APP CON <b>125.1 363.2</b>	UNICOM <b>123.075</b> (CTAF) <b>0</b>
--------------------------	--------------------------------------	--



	LIN VOR/DME		LIN 8		LIN 15		3000 LIN
	012°		012°		012°		LIN R-012
Procedure Turn NA	3000		3000		3000		
	8 NM		7 NM		5.4 NM		
CATEGORY	A	B	C	D			
S-1	2080-1 390 (400-1)	2080-1¼ 390 (400-1¼)		NA			
CIRCLING	2200-1 506 (600-1)	2200-1¼ 506 (600-1¼)		NA			
SACRAMENTO EXEC ALTIMETER SETTING MINIMUMS							
S-1	2380-1 690 (700-1)	2380-1¼ 690 (700-1¼)		NA			
CIRCLING	2520-1 826 (900-1)	2520-1¼ 826 (900-1¼)		NA			



SW-2, 16 APR 2026 to 14 MAY 2026

SW-2, 16 APR 2026 to 14 MAY 2026