

WAAS CH <b>90333</b> <b>W27A</b>	APP CRS <b>276°</b>	Rwy Ldg TDZE Apt Elev	<b>4557</b> <b>9</b> <b>9</b>
--	------------------------	-----------------------------	-------------------------------------

# RNAV (GPS) RWY 27

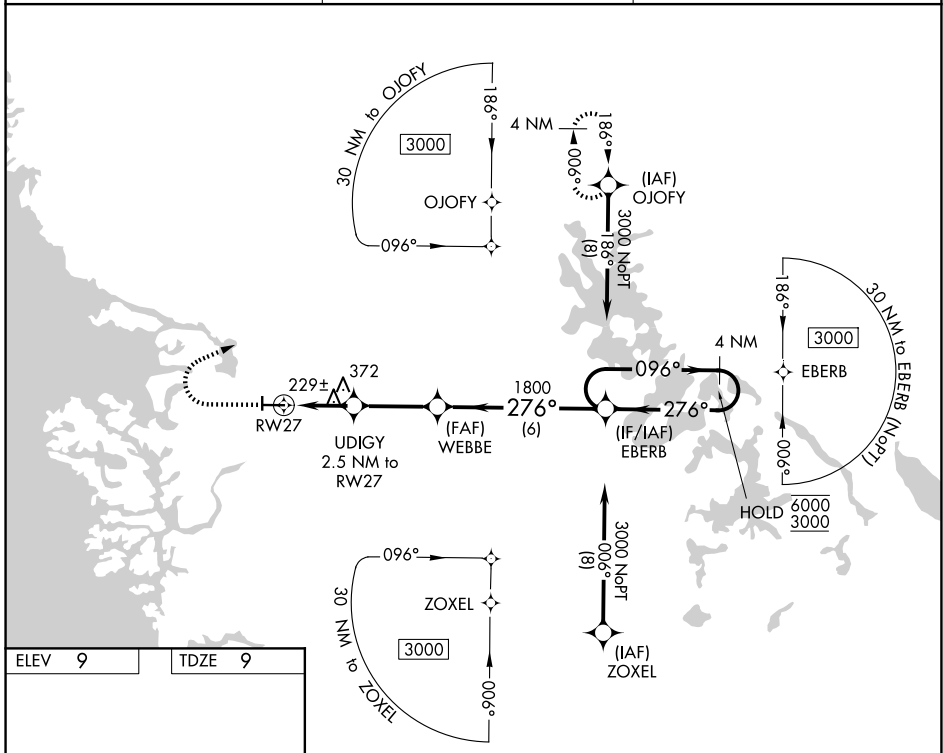
CRYSTAL RIVER/DAVIS FLD (CGC)

RNP APCH.

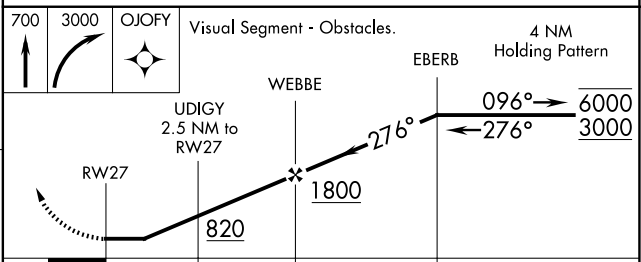
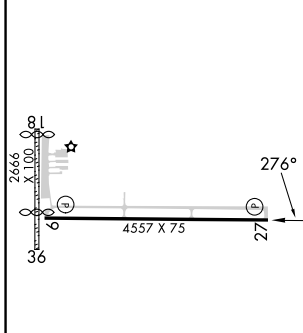
**▼** Circling NA to Rwy 18 and 36. Procedure NA at night.  
**▲** Rwy 27 helicopter visibility reduction below 1 SM NA.

MISSED APPROACH: Climb to 700 then climbing right turn to 3000 direct OJOFY and hold.

AWOS-3 <b>118.325</b>	JACKSONVILLE APP CON <b>118.6 251.15</b>	UNICOM <b>122.725 (CTAF) 0</b>
--------------------------	---	-----------------------------------



ELEV <b>9</b>	TDZE <b>9</b>
---------------	---------------



CATEGORY	A	B	C	D
LP MDA	480-1	471 (500-1)	480-1 $\frac{3}{8}$	471 (500-1 $\frac{3}{8}$ )
LNAV MDA	640-1	631 (700-1)	640-1 $\frac{3}{4}$	631 (700-1 $\frac{3}{4}$ )
CIRCLING	640-1	631 (700-1)	760-2 $\frac{1}{4}$ 751 (800-2 $\frac{1}{4}$ )	880-2 $\frac{3}{4}$ 871 (900-2 $\frac{3}{4}$ )

MIRL Rwy 9-27  
 REIL Rwy 9 and 27

CRYSTAL RIVER, FLORIDA  
 Amdt 1C 26MAR20

28°52'N-82°34'W

# CRYSTAL RIVER/DAVIS FLD (CGC)

## RNAV (GPS) RWY 27

SE-3, 16 APR 2026 to 14 MAY 2026

SE-3, 16 APR 2026 to 14 MAY 2026