

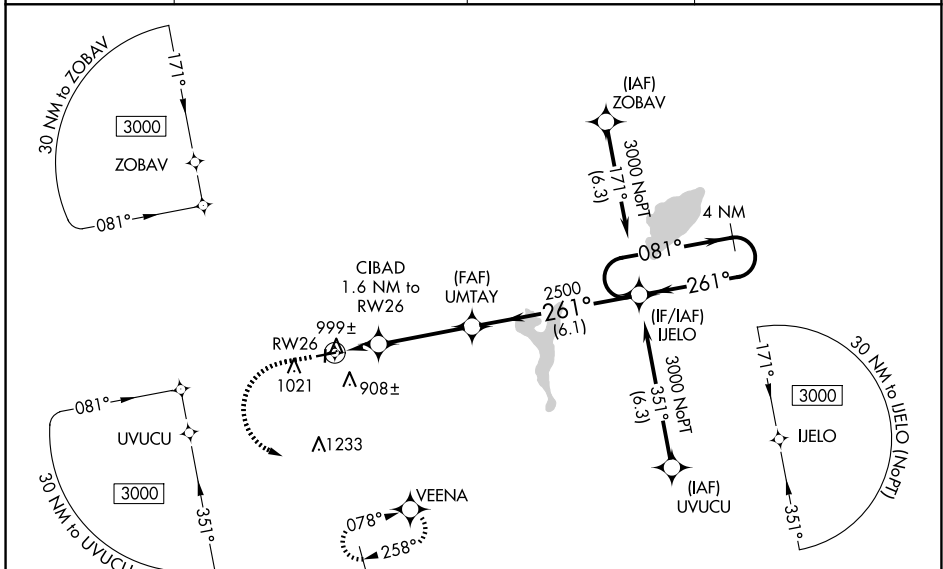
WAAS CH 73023 W26A	APP CRS 261°	Rwy Idg TDZE Apt Elev	3900 860 860
--	------------------------	-----------------------------	---

RNAV (GPS) RWY 26

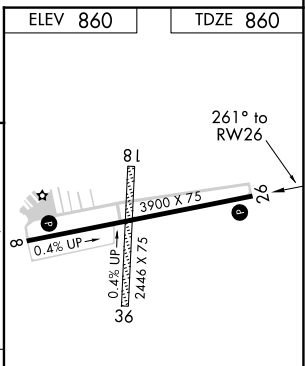
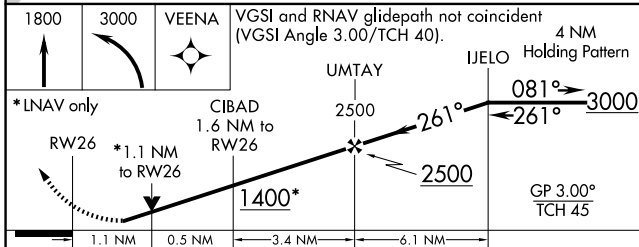
EAST TROY MUNI (57C)

RNP APCH. ▼ For uncompensated Baro-VNAV systems, LNAV/VNAV NA below -16°C (4°F) or above 54°C (130°F). Obtain local altimeter setting on CTAF; when not received, use General Mitchell Intl altimeter setting and increase all DA 72 feet and all MDA 80 feet, increase LNAV/VNAV visibility all Cats ¼ mile. Rwy 26 helicopter visibility reduction below ¾ SM NA. Baro-VNAV and VDP NA when using General Mitchell Intl altimeter setting.	MISSED APPROACH: Climb to 1800 then climbing left turn to 3000 direct VEENA and hold.
---	---

AWOS-3PT 118.125	MILWAUKEE APP CON 125.35 307.0	GCO 121.725	UNICOM 123.0 (CTAF) 0
----------------------------	--	-----------------------	--



ELEV 860	TDZE 860
----------	----------



CATEGORY	A	B	C	D
LPV DA	1110-1	250 (300-1)		NA
LNAV/VNAV DA	1161-1	301 (400-1)		NA
LNAV MDA	1260-1	400 (500-1)		NA

MIRL Rwy 8-26 **0**
REIL Rws 8 and 26 **0**

EC-3, 16 APR 2026 to 14 MAY 2026

EC-3, 16 APR 2026 to 14 MAY 2026