

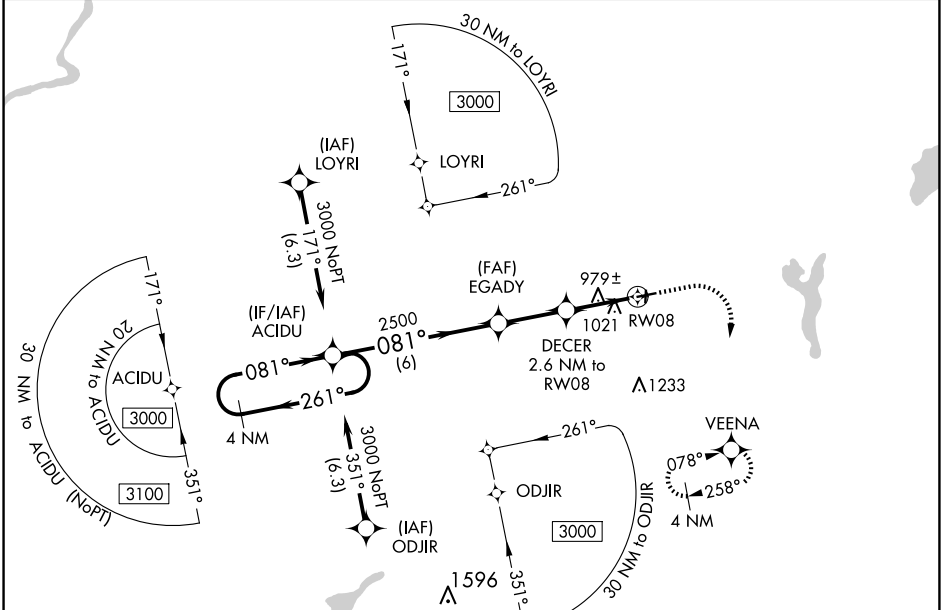
WAAS CH 78423 W08A	APP CRS 081°	Rwy Idg TDZE Apt Elev	3900 851 860
--	------------------------	-----------------------------	---

RNAV (GPS) RWY 8

EAST TROY MUNI (57C)

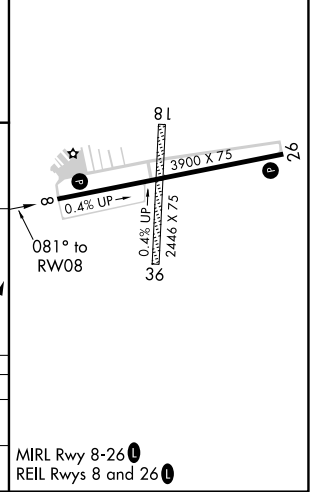
RNP APCH. ▼ Obtain local altimeter setting on CTAF; when not received use General Mitchell Intl altimeter setting and increase all MDA 80 feet. Rwy 8 helicopter visibility reduction below 3/4 SM NA. VDP NA when using General Mitchell Intl altimeter setting.	MISSED APPROACH: Climb to 2400 then climbing right turn to 3000 direct VEENA and hold.
--	--

AWOS-3PT 118.125	MILWAUKEE APP CON 125.35 307.0	GCO 121.725	UNICOM 123.0 (CTAF) 0
----------------------------	--	-----------------------	--



ELEV 860	TDZE 851
----------	----------

	ACIDU	EGADY	DECER	VEENA
4 NM Holding Pattern			2.6 NM to RW08	
3000 ← 261°	← 081° →	081°	3.00° TCH 43	2400
		2500	1.1 NM to RW08	3000
		1700	1.1 NM to RW08	VEENA
	6 NM	2.5 NM	1.5 NM	1.1 NM
CATEGORY	A	B	C	D
LP MDA	1240-1	389 (400-1)		NA
LNAV MDA	1280-1	429 (500-1)		NA



EC-3, 16 APR 2026 to 14 MAY 2026

EC-3, 16 APR 2026 to 14 MAY 2026