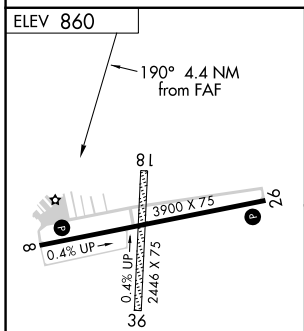
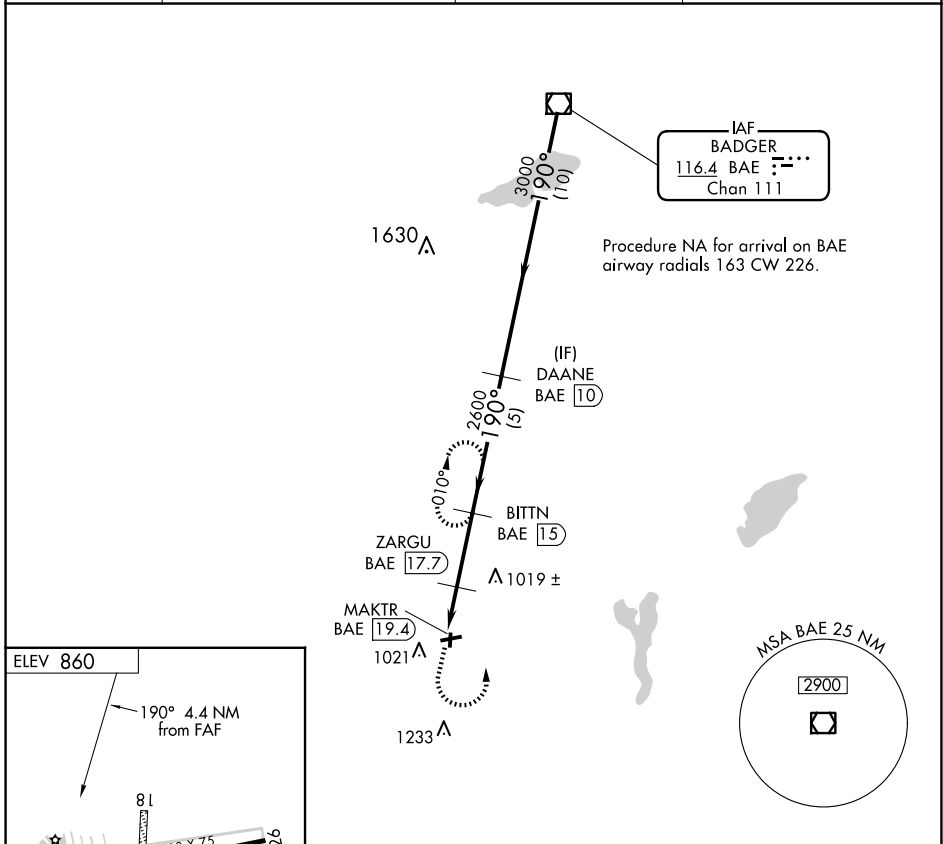


VOR/DME BAE <b>116.4</b> Chan <b>111</b>	APP CRS <b>190°</b>	Rwy Idg TDZE Apt Elev	<b>N/A</b> <b>N/A</b> <b>860</b>
--	------------------------	-----------------------------	--

**VOR/DME-A**  
EAST TROY MUNI (57C)

<p><b>▼</b> Circling NA to Rwys 18 and 36.</p>	<p>MISSED APPROACH: Climb to 2700 then left turn on BAE VOR/DME R-190 to BITTN/15 DME and hold.</p>
--	---

AWOS-3PT <b>118.125</b>	MILWAUKEE APP CON <b>125.35 307.0</b>	GCO <b>121.725</b>	UNICOM <b>123.0</b> (CTAF) <b>📞</b>
----------------------------	--	-----------------------	--



<p>2700</p> <p>BAE R-190</p>	<p>BITTN BAE 15</p>	<p>DAANE BAE 10</p>	<p>BAE VOR/DME</p>	<p>3000</p>
				<p>3000</p>
<p>MAKTR BAE 19.4</p>	<p>ZARGU BAE 17.7</p>	<p>BITTN BAE 15</p>	<p>2600</p>	<p>1800</p>
				<p>1800</p>
<p>1.7 NM</p>		<p>2.7 NM</p>		<p>5 NM</p>
<p>10 NM</p>		<p>190°</p>		<p>3000</p>
CATEGORY	A	B	C	D
CIRCLING	1340-1	480 (500-1)	NA	

MIRL Rwy 8-26 **📞**  
REIL Rwys 8 and 26 **📞**

EC-3, 16 APR 2026 to 14 MAY 2026

EC-3, 16 APR 2026 to 14 MAY 2026