

APP CRS	Rwy Idg	<b>6101</b>
<b>183°</b>	TDZE	<b>2211</b>
	Apt Elev	<b>2211</b>

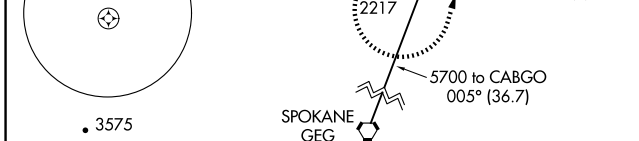
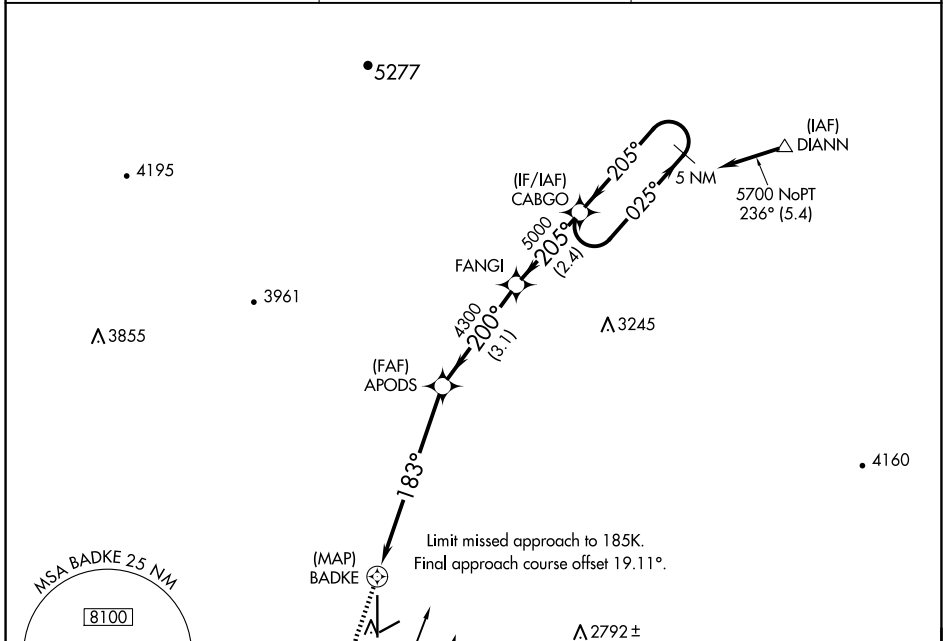
# RNAV (GPS) RWY 16

DEER PARK (DEW)

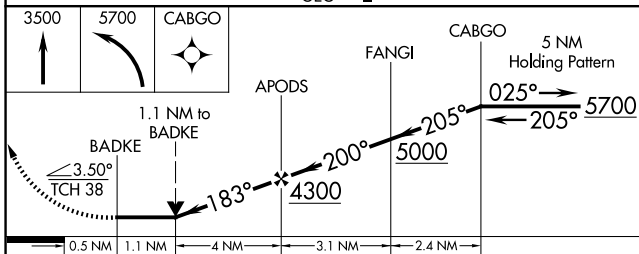
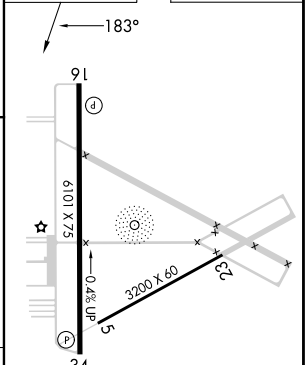
When local altimeter setting not received, procedure NA.  
 DME/DME RNP-0.3 NA.  
 Helicopter visibility reduction below 3/4 SM NA.  
 Circling NA west of Rwy 16-34.

MISSED APPROACH: Climb to 3500 then climbing left turn to 5700 direct CABGO and hold.

ASOS <b>135.175</b>	SPOKANE APP CON <b>123.75 282.25</b>	UNICOM <b>123.0 (CTAF) 0</b>
------------------------	---	---------------------------------



ELEV	<b>2211</b>	TDZE	<b>2211</b>
------	-------------	------	-------------



CATEGORY	A	B	C	D
LNVA MDA	2640-1	429 (500-1)	2640-1 1/4	429 (500-1 1/4)
<b>C</b> CIRCLING	2700-1	489 (500-1)	2700-1 1/2	2860-2
			489 (500-1 1/2)	649 (700-2)

REIL Rwy 16 and 34 0  
 MRL Rwy 16-34 0

NW-1, 16 APR 2026 to 14 MAY 2026

NW-1, 16 APR 2026 to 14 MAY 2026