

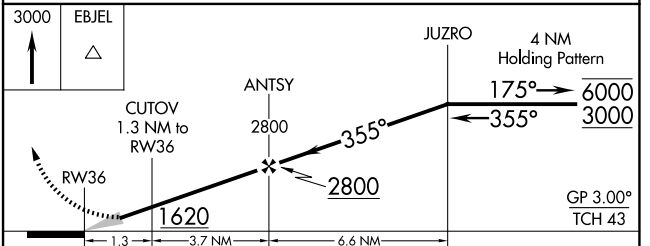
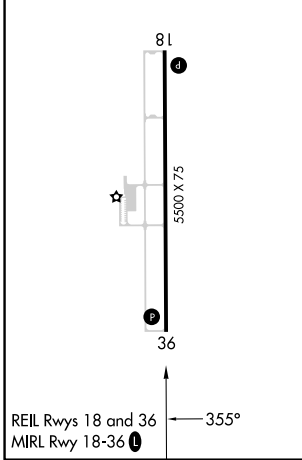
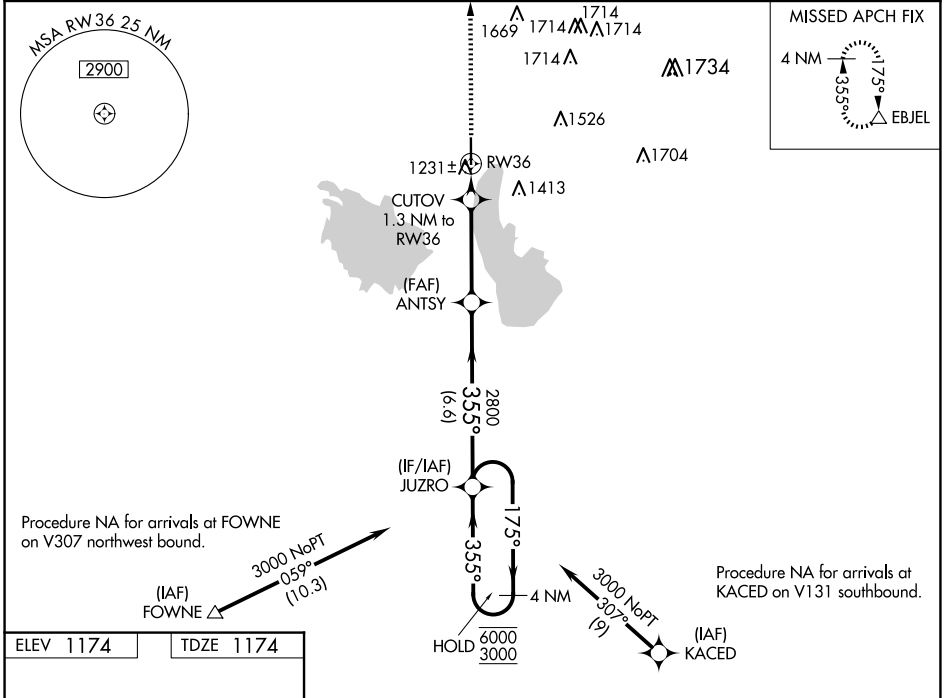
WAAS CH 40222 W36A	APP CRS 355°	Rwy Ldg THRE 1174 Apt Elev 1174
--	------------------------	---

RNAV (GPS) RWY 36

COFFEY COUNTY (UKL)

RNP APCH-GPS. ▼ For uncompensated Baro-VNAV systems, LNAV/VNAV ▲ NA below -17°C or above 54°C.	MISSED APPROACH: Climb to 3000 direct EBJEL and hold.
--	---

AWOS-3PT 121.125	KANSAS CITY CENTER 127.725 270.25	UNICOM 123.0 (CTAF) 0
----------------------------	---	---------------------------------



CATEGORY	A	B	C	D
LPV DA	1424-1	250 (300-1)		NA
LNAV/VNAV DA	1424-1	250 (300-1)		NA
LNAV MDA	1500-1	326 (400-1)		NA
C CIRCLING	1580-1 406 (500-1)	1640-1 466 (500-1)	1920-2¼ 746 (800-2¼)	NA

NC-2, 16 APR 2026 to 14 MAY 2026

NC-2, 16 APR 2026 to 14 MAY 2026