

VORTAC TUL 114.4 Chan 91	APP CRS 060°	Rwy Ldg TDZE Apt Elev N/A N/A 733
--	------------------------	---

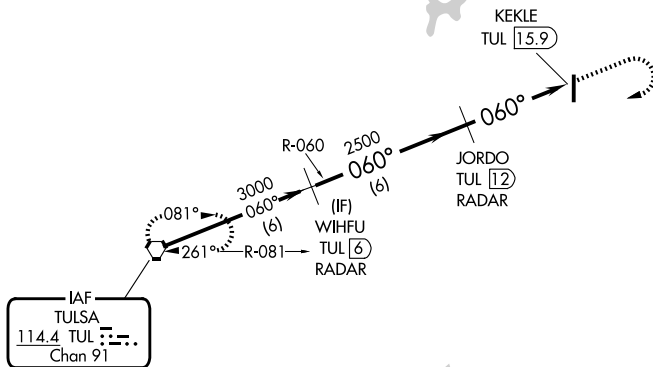
VOR/DME-B
CLAREMORE RGNL (GCM)

▼ If local altimeter setting not received, use Tulsa Intl altimeter setting and increase all MDAs 60 feet.

MISSED APPROACH: Climb to 2500 then climbing right turn to 3000 direct TUL VORTAC and hold.

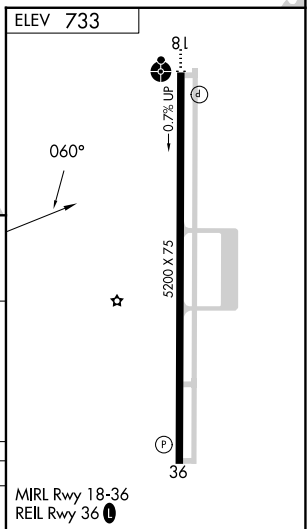
AWOS-3PT 119.925	TULSA APP CON 119.1 360.825	UNICOM 122.7 (CTAF) 0
----------------------------	---------------------------------------	---------------------------------

Procedure NA for arrivals on TULSA (TUL)
VORTAC airway radials 358 CW 115.



SC-1, 16 APR 2026 to 14 MAY 2026

SC-1, 16 APR 2026 to 14 MAY 2026



Procedure Turn NA	WIHFU TUL (6) RADAR	JORDO TUL (12) RADAR	2500	3000	TUL
	3000	2500	KEKLE TUL (15.9)		
	6 NM		3.9 NM		
CATEGORY	A	B	C	D	
CIRCLING	1260-1	527 (600-1)	1380-1 ³ / ₄ 647 (700-1 ³ / ₄)	NA	