

WAAS CH <b>42506</b> <b>W05A</b>	APP CRS <b>051°</b>	Rwy Ldg TDZE Apt Elev	<b>5002</b> <b>235</b> <b>235</b>
--	------------------------	-----------------------------	---

# RNAV (GPS) RWY 5

COOK COUNTY (15J)

RNP APCH - GPS.

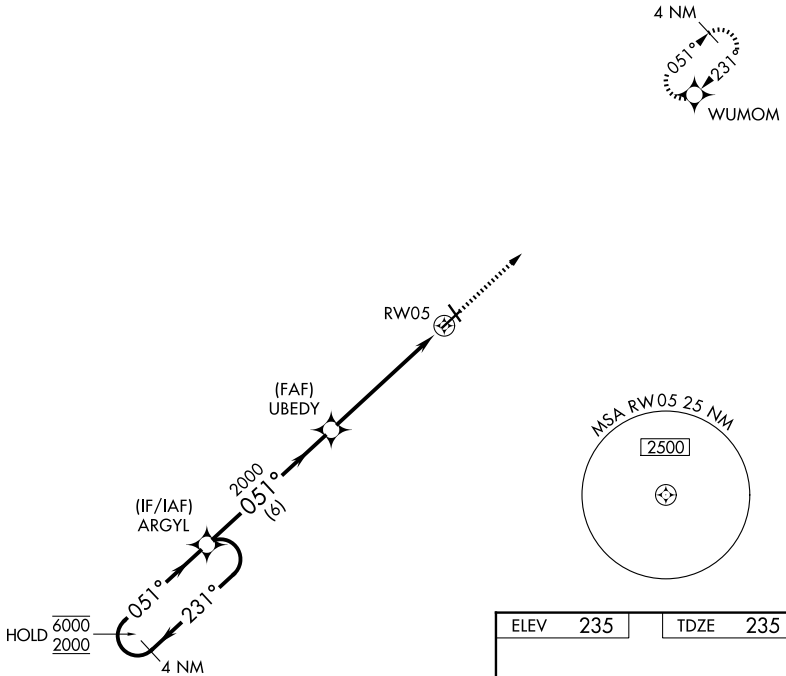
- ▼ Procedure NA at night. Rwy 5 helicopter visibility reduction below 1 SM NA.
- ▲ For uncompensated Baro-VNAV systems, LNAV/VNAV NA below -15°C or above 54°C.

MISSED APPROACH: Climb to 3000 direct WUMOM and hold.

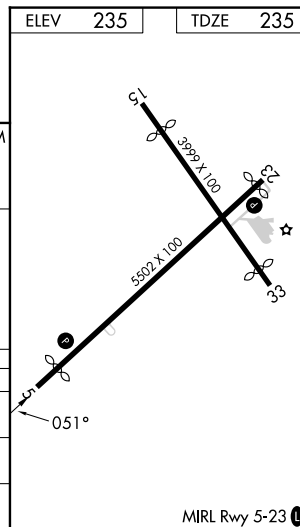
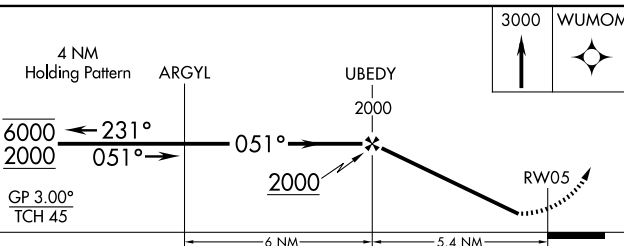
AWOS-3PT  
**118.025**

VALDOSTA APP CON★  
**126.6 285.6**

UNICOM  
**122.8 (CTAF) 0**



ELEV	235	TDZE	235
------	-----	------	-----



CATEGORY	A	B	C	D
LPV DA	534-1		299 (300-1)	
LNAV/VNAV DA	622-1½		387 (400-1½)	
LNAV MDA	740-1	505 (600-1)	740-1½	505 (600-1½)

SE-4, 16 APR 2026 to 14 MAY 2026

SE-4, 16 APR 2026 to 14 MAY 2026