

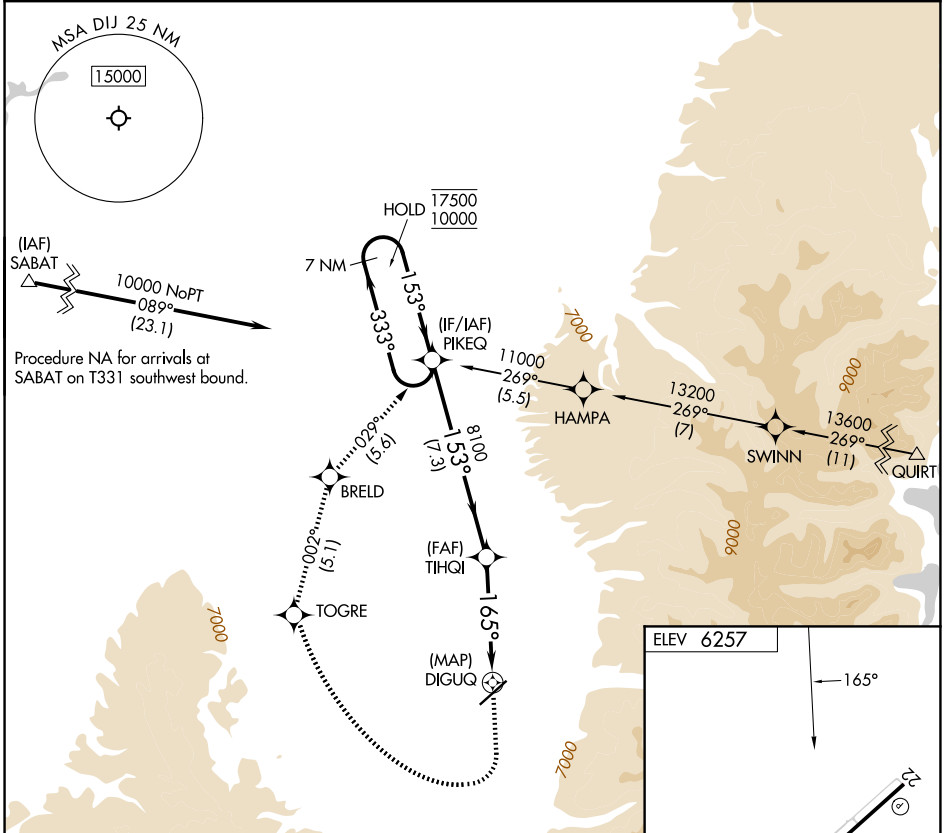
| | | |
|---------|----------|------|
| APP CRS | Rwy Ldg | N/A |
| 165° | TDZE | N/A |
| | Apt Elev | 6257 |

RNAV (GPS)-A

DRIGGS/REED MEML (DIJ)

| | |
|--|--|
| RNP APCH - GPS. | MISSED APPROACH: (Do not exceed 185K until TOGRE) Climb to 7500, then climbing right turn to 10000 direct TOGRE then track 002° to BRELD then track 029° to PIKEQ and hold. |
| <p>▼ Circling NA for Cats C and D southeast of Rwy 4-22.</p> <p>▲ Circling Rwy 22 NA at night.</p> | |

| | | |
|----------------------------|--|---------------------------------|
| AWOS-3PT 120.775 | SALT LAKE CENTER 128.35 239.25 | UNICOM 122.7 (CTAF) 0 |
|----------------------------|--|---------------------------------|



NW-1, 16 APR 2026 to 14 MAY 2026

NW-1, 16 APR 2026 to 14 MAY 2026

