

# RNAV (GPS) RWY 34

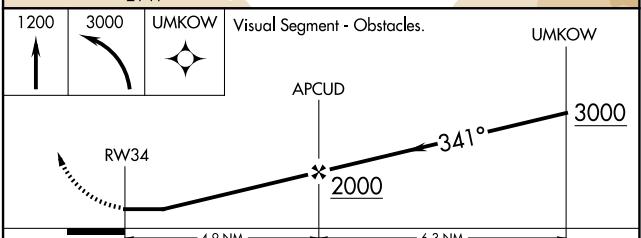
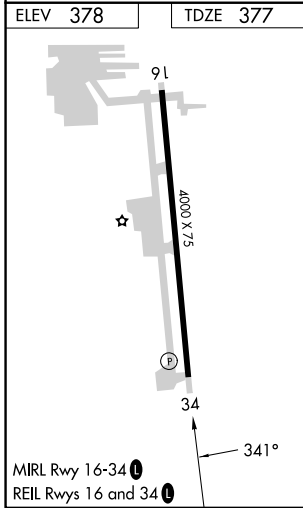
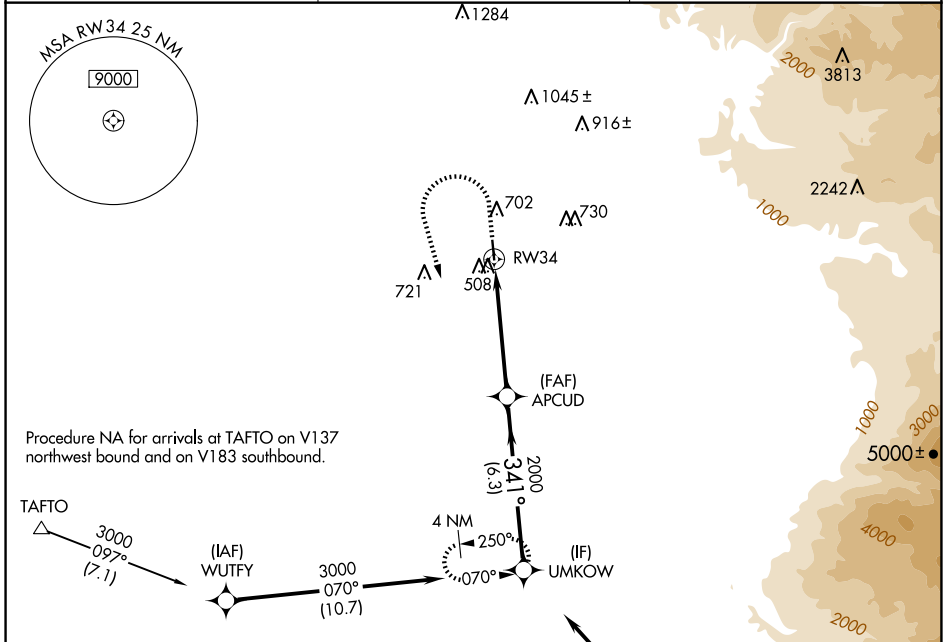
BAKERSFIELD MUNI (L45)

APP CRS <b>341°</b>	Rwy Ldg TDZE Apt Elev	<b>4000</b> <b>377</b> <b>378</b>
------------------------	-----------------------------	-----------------------------------------

**NA** DME/DME RNP-0.3 NA. Use Meadows Fld altimeter setting. When Meadows Fld altimeter setting not received, use Porterville altimeter setting and increase all MDA 80 feet, increase LNAV and Circling Cat C and D visibility ¼ mile. Helicopter visibility reduction below ¼ SM NA. Night Landing Rwy 16 NA.

**MISSED APPROACH:** Climb to 1200 then climbing left turn to 3000 direct UMKOW and hold.

BFL ASOS <b>118.6</b>	BAKERSFIELD APP CON * <b>126.45 270.3</b>	UNICOM <b>122.8 (CTAF) 0</b>
--------------------------	----------------------------------------------	---------------------------------



CATEGORY	A	B	C	D
LNAV MDA	840-1	463 (500-1)	840-1 $\frac{3}{8}$	463 (500-1 $\frac{3}{8}$ )
<b>C</b> CIRCLING	1060-1	682 (700-1)	1120-2 $\frac{1}{4}$ 742 (800-2 $\frac{1}{4}$ )	1120-2 $\frac{1}{2}$ 742 (800-2 $\frac{1}{2}$ )

SW-3, 16 APR 2026 to 14 MAY 2026

SW-3, 16 APR 2026 to 14 MAY 2026