

VOR/DME VNY <b>113.1</b> Chan 78	APP CRS <b>046°</b>	Rwy Ldg TDZE Apt Elev <b>N/A</b> <b>N/A</b> <b>1003</b>
--	------------------------	--

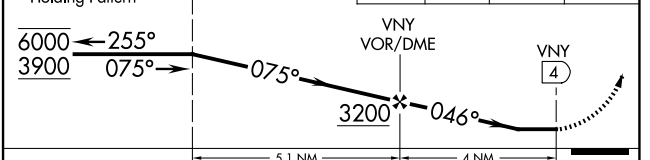
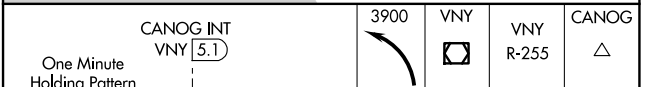
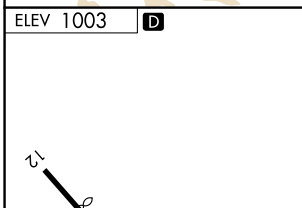
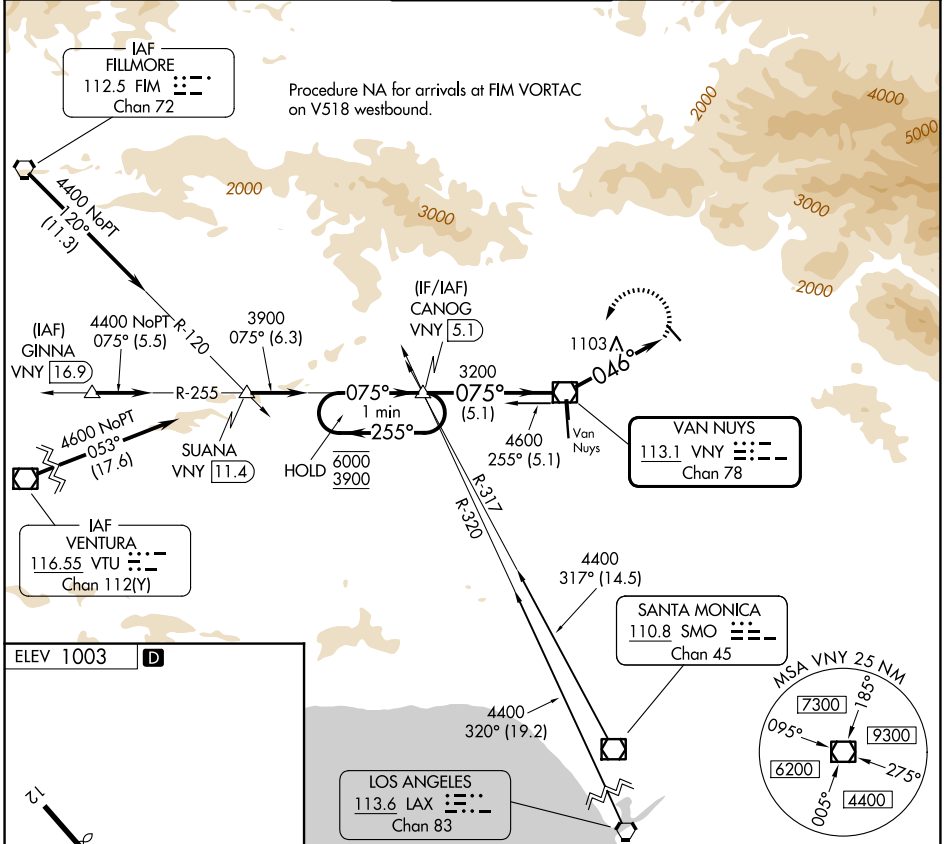
# VOR-A

WHITEMAN (WHP)

**⚠** When local altimeter setting not received, use Burbank altimeter setting. Procedure NA at night.

MISSED APPROACH: Climbing left turn to 3900 direct VNY VOR/DME then on VNY VOR/DME R-255 to CANOG INT/ 5.1 DME and hold.

ATIS <b>132.1</b>	SOCAL APP CON <b>120.4 360.6</b> (NORTH) <b>134.2 338.2</b> (WEST)	WHITEMAN TOWER * <b>135.0</b> (CTAF)	GND CON <b>125.0</b>	UNICOM <b>122.95</b>
----------------------	--	---	-------------------------	-------------------------



FAF to MAP 4 NM					
Knots	60	90	120	150	180
Min:Sec	4:00	2:40	2:00	1:36	1:20
CATEGORY	A	B	C	D	
CIRCLING	1760-1 757 (800-1)	1860-1¼ 857 (900-1¼)	2200-3 1197 (1200-3)	NA	

SW-3, 16 APR 2026 to 14 MAY 2026

SW-3, 16 APR 2026 to 14 MAY 2026