

WAAS CH <b>97547</b> <b>W27A</b>	APP CRS <b>276°</b>	Rwy Ldg TDZE Apt Elev	<b>4299</b> <b>668</b> <b>670</b>
--	------------------------	-----------------------------	---

# RNAV (GPS) RWY 27

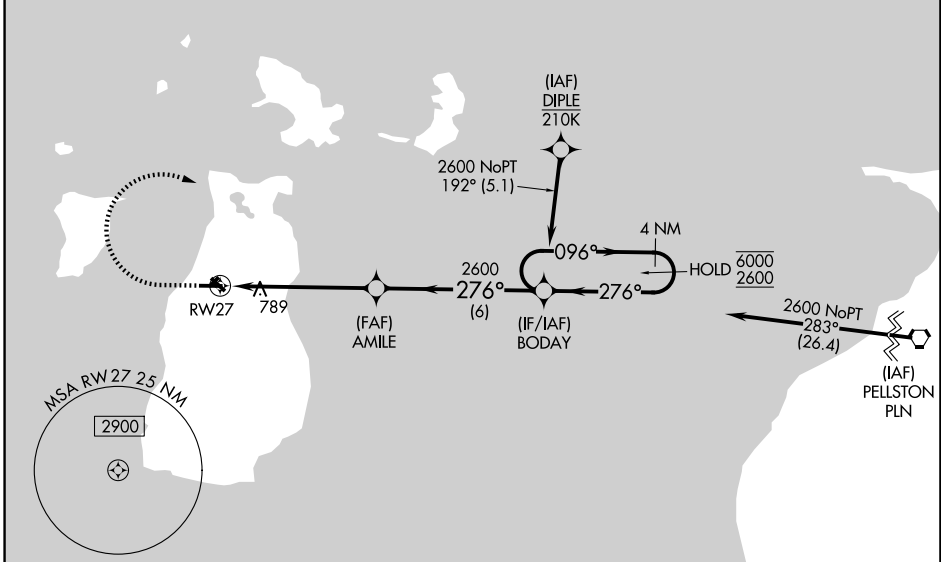
BEAVER ISLAND (SJX)

RNP APCH - GPS.

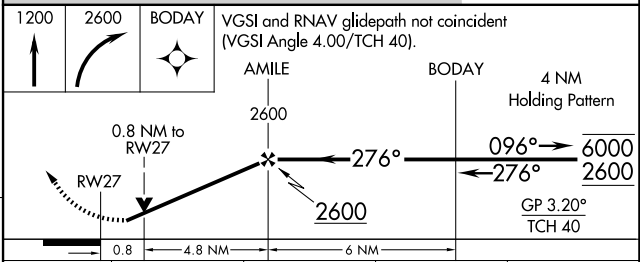
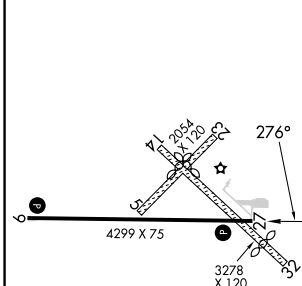
⚠ Circling NA to Rwy 5, 14, 23 and 32. Baro-VNAV and VDP NA when using PLN altimeter setting.  
 ⚠ Rwy 27 helicopter visibility reduction below 3/4 SM NA. For uncompensated Baro-VNAV systems, LNAV/VNAV NA below -16°C or above 54°C. When local altimeter setting not received, use PLN altimeter setting: increase LPV DA to 1077 feet and all visibilities 1/8 SM; increase LNAV/VNAV DA to 1124 feet and all visibilities 3/8 SM; increase all MDAs 100 feet and LNAV visibility Cat C 3/8 SM, and Circling visibility Cat C 1/4 SM.

MISSED APPROACH: Climb to 1200 then climbing right turn to 2600 direct BODAY and hold.

AWOS-3P <b>118.075</b>	MINNEAPOLIS CENTER <b>134.6 354.05</b>	UNICOM <b>122.8 (CTAF) 0</b>
---------------------------	---	---------------------------------



ELEV <b>670</b>	TDZE <b>668</b>
-----------------	-----------------



CATEGORY	A	B	C	D
LPV DA		993-1	325 (400-1)	NA
LNAV/VNAV DA		1040-1	372 (400-1)	NA
LNAV MDA		1040-1	372 (400-1)	NA
CIRCLING	1100-1 430 (500-1)	1120-1 450 (500-1)	1180-1 1/2 510 (600-1 1/2)	NA

MIRL Rwy 9-27  
 REIL Rwy 9 and 27

EC-1, 16 APR 2026 to 14 MAY 2026

EC-1, 16 APR 2026 to 14 MAY 2026