

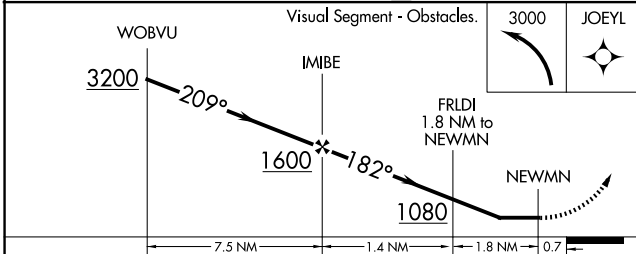
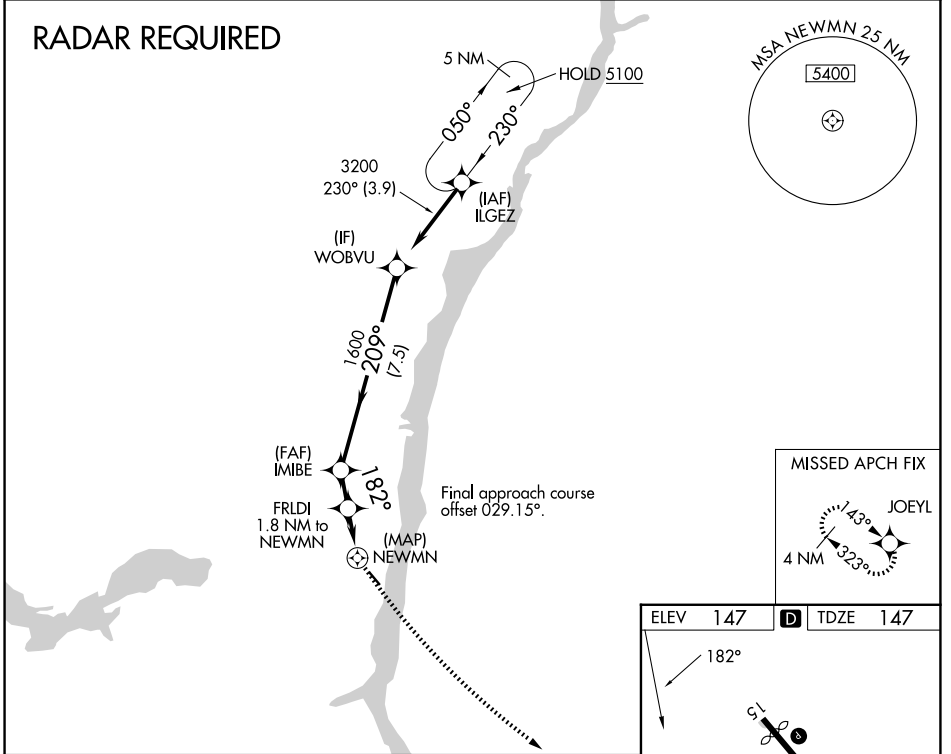
WAAS CH 40136 W15A	APP CRS 182°	Rwy Ldg 2775 TDZE 147 Apt Elev 147
--	------------------------	---

RNAV (GPS) RWY 15

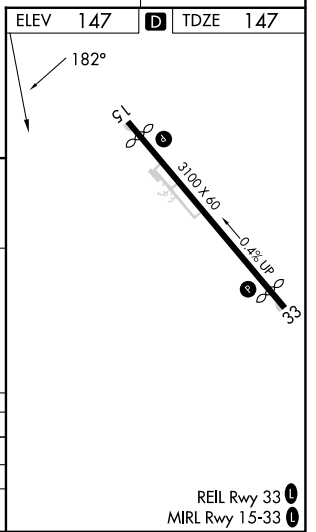
KINGSTON-ULSTER (20N)

RNP APCH - GPS.		MISSED APPROACH: Climbing left turn to 3000 direct JOEYL and hold.
<p>▼ Rwy 15 helicopter visibility reduction below 1 SM NA. When Circling to Rwy 33 at night, operational VGSI required, remain on or above VGSI glidepath until threshold. Use Hudson altimeter setting. When not received, use Newburgh altimeter setting and increase all MDA 60 feet. Straight-in Rwy 15 NA at night.</p> <p>▲ NA</p>		

NEW YORK APP CON 132.75 363.1	UNICOM 122.8 (CTAF)	123.3 0
---	-------------------------------	----------------



CATEGORY	A	B	C	D
LP MDA	720-1	573 (600-1)		NA
LNAV MDA	800-1	653 (700-1)		NA
CIRCLING	800-1 653 (700-1)	960-1¼ 813 (900-1¼)		NA



NE-2, 16 APR 2026 to 14 MAY 2026

NE-2, 16 APR 2026 to 14 MAY 2026

REIL Rwy 33 0
MIRL Rwy 15-33 0