

APP CRS	Rwy Ldg	N/A
018°	TDZE	N/A
	Apt Elev	2131

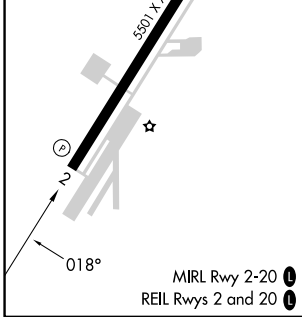
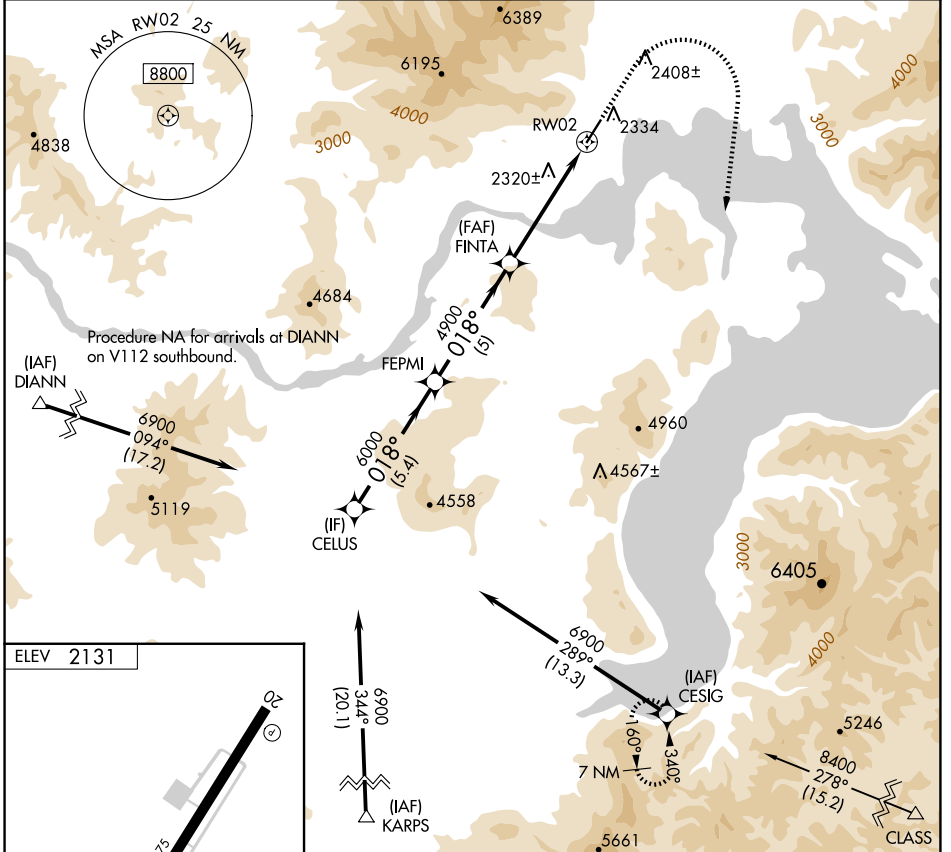
RNAV (GPS)-B

SANDPOINT (SZT)

▼ DME/DME RNP-0.3 NA. Circling NA west of Rwy 2-20.
▲ When local altimeter setting not received, use Deer Park
❄ -16°C altimeter setting and increase all MDA 120 feet.

MISSED APPROACH: Climb to 5800 then climbing right turn to 7900 direct CESIG and hold.

AWOS-2 135.425	SEATTLE CENTER 123.95 290.55	UNICOM 122.7 (CTAF) ①
--------------------------	--	--



	CELUS	FEPMI	FINTA	RW02	5800	7900	CESIG
	6900				↑	↷	✦
	018°						
		6000					
			4900				
	5.4 NM	5 NM	5.2 NM				
CATEGORY	A	B	C	D			
☑ CIRCLING	3600-1¼ 1469 (1500-1¼)	3600-1½ 1469 (1500-1½)	3600-3 1469 (1500-3)	4180-3 2049 (2100-3)			

NW-1, 16 APR 2026 to 14 MAY 2026

NW-1, 16 APR 2026 to 14 MAY 2026