

APP CRS	Rwy Ldg	5501
198°	TDZE	2131
	Apt Elev	2131

RNAV (GPS) Y RWY 20

SANDPOINT (SZT')

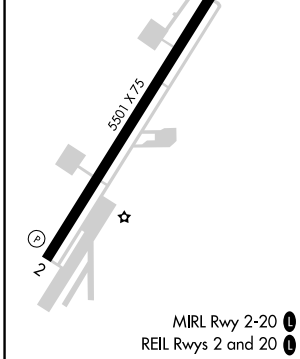
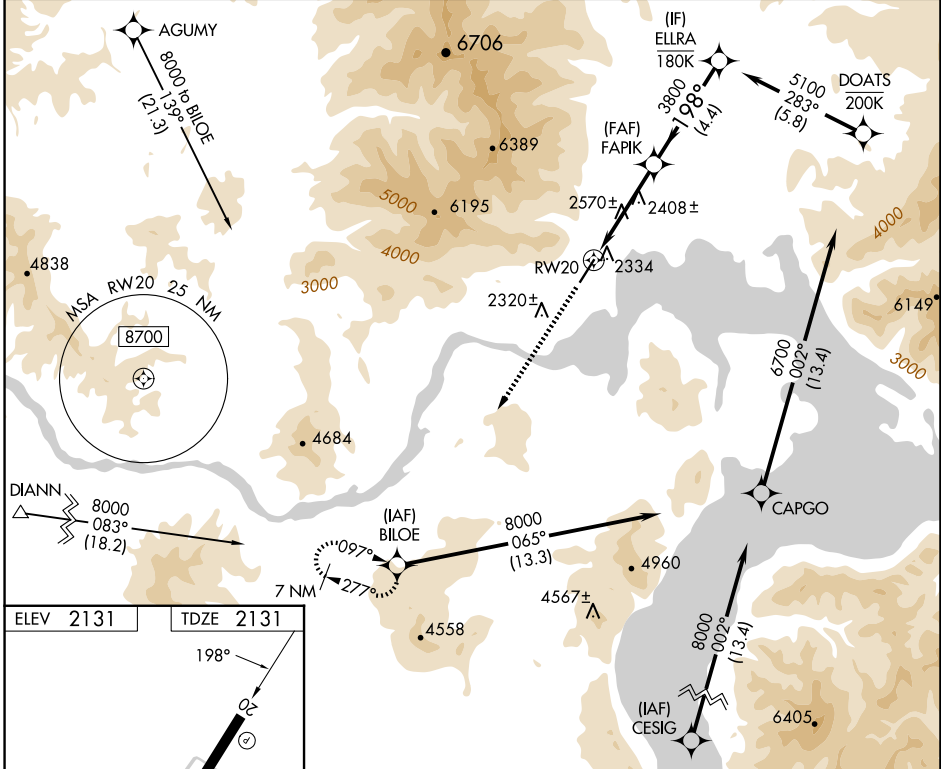
RNP APCH.

⚠ Circling NA west of Rwy 2-20. Rwy 20 helicopter visibility reduction below 3/4 SM NA. VDP NA with Deer Park altimeter setting. When local altimeter not received, use Deer Park altimeter setting and increase all MDA 120 feet.

⚠ MISSED APPROACH: Climb to 6600 direct BILOE and hold, continue climb in hold to 6600.

⚠ -16°C

AWOS-2 135.425	SEATTLE CENTER 123.95 290.55	UNICOM 122.7 (CTAF) ①
--------------------------	--	---------------------------------



6600 BILOE	VGS1 and descent angles not coincident (VGS1 Angle 3.75/TCH 50).			ELLRA
↑	⬠			
RW20		3.1 NM to RW20	≤ 3.77° TCH 55	5100
3.1 NM		0.9 NM	4.4 NM	
CATEGORY	A	B	C	D
LNAV MDA	3400-1 1/4 1269 (1300-1 1/4)	3400-1 1/2 1269 (1300-1 1/2)	3400-3 1269 (1300-3)	NA
ⓐ CIRCLING	3400-1 1/4 1269 (1300-1 1/4)	3400-1 1/2 1269 (1300-1 1/2)	3400-3 1269 (1300-3)	NA

NW-1, 16 APR 2026 to 14 MAY 2026

NW-1, 16 APR 2026 to 14 MAY 2026