

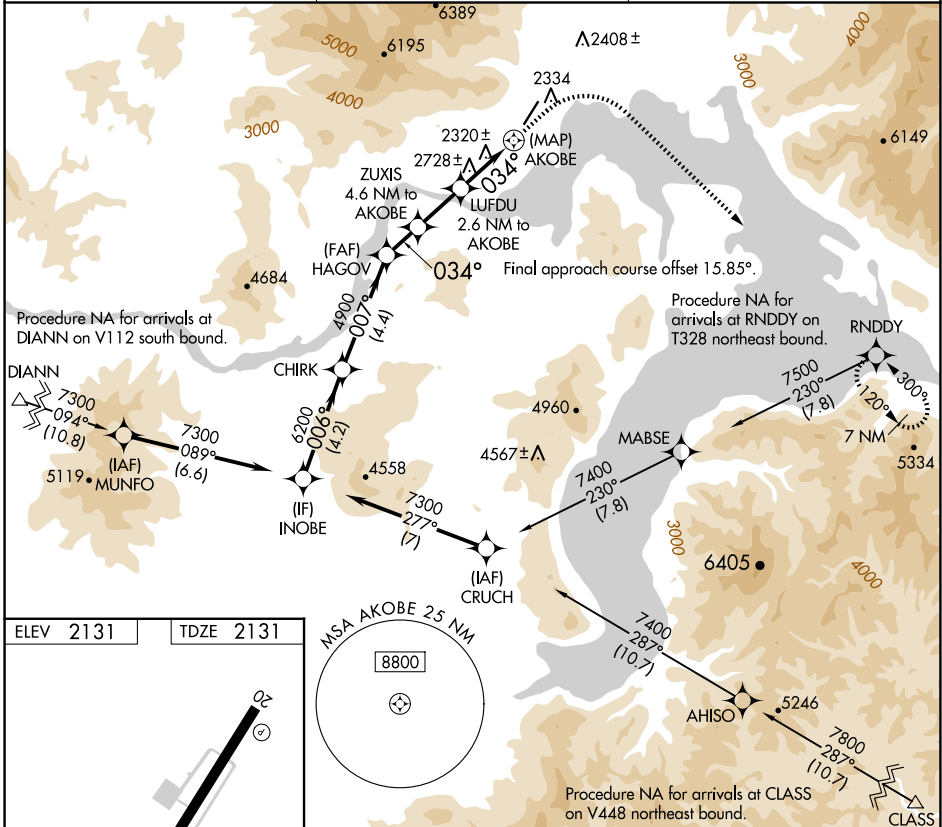
WAAS CH <b>63146</b> <b>W02A</b>	APP CRS <b>034°</b>	Rwy Ldg TDZE Apt Elev	<b>5501</b> <b>2131</b> <b>2131</b>
--	------------------------	-----------------------------	---

# RNAV (GPS) Z RWY 2

SANDPOINT (SZT)

RNP APCH - GPS.	MISSED APPROACH: Climb to 3900 then climbing right turn to 9000 direct RNDYD and hold, continue climb-in-hold to 9000. *Missed approach requires minimum climb of 350 feet per NM to 6500; If unable to meet climb gradient, see RNAV (GPS)-B.
Rwy 2 helicopter visibility reduction below 1 SM NA. Procedure NA at night. -16°C	

AWOS-2 <b>135.425</b>	SEATTLE CENTER <b>123.95 290.55</b>	UNICOM <b>122.7 (CTAF) 0</b>
--------------------------	--	---------------------------------



INOBE	CHIRK	HAGOV	ZUXIS	LUFDU	AKOBE	RNDYD
7300	6200	4900	4300	3480		
4.2 NM	4.4 NM	1.5 NM	2.1 NM	2.6 NM	0.7	

INOBE	CHIRK	HAGOV	ZUXIS	LUFDU	AKOBE	RNDYD
7300	6200	4900	4300	3480		
4.2 NM	4.4 NM	1.5 NM	2.1 NM	2.6 NM	0.7	

CATEGORY	A	B	C	D
LP MDA*	3100-1¼ 969 (1000-1¼)	3100-1½ 969 (1000-1½)	3100-3 969 (1000-3)	NA

NW-1, 16 APR 2026 to 14 MAY 2026

NW-1, 16 APR 2026 to 14 MAY 2026