

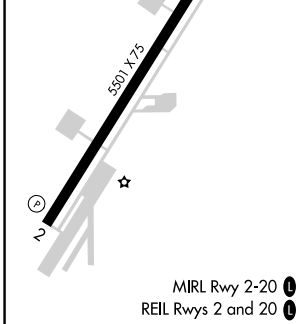
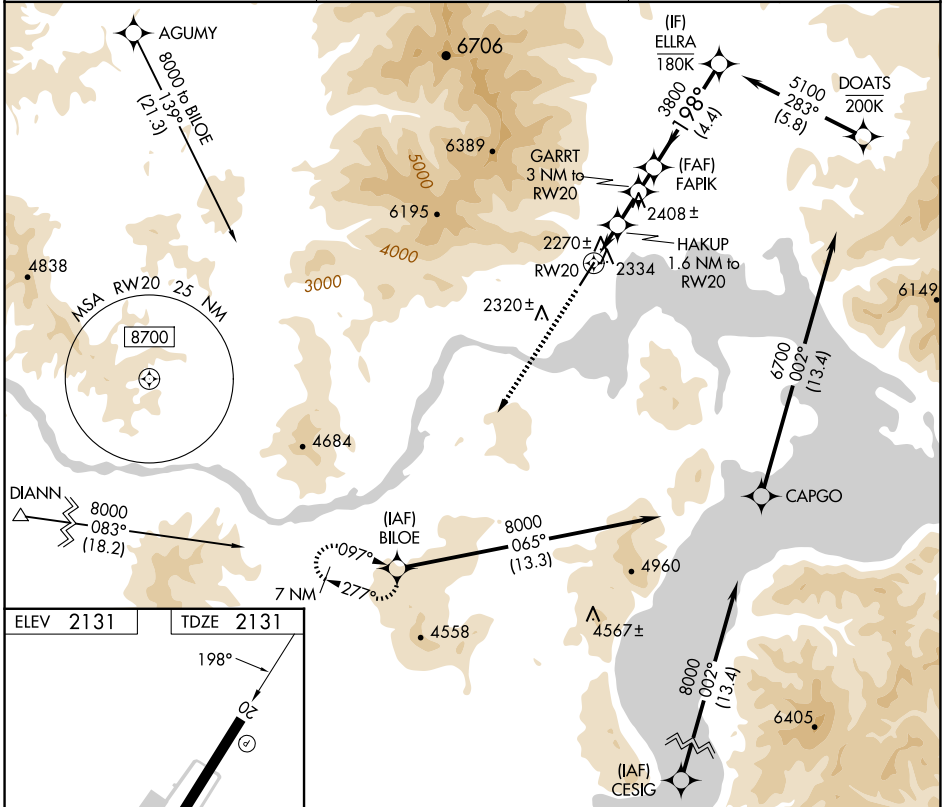
WAAS CH <b>99542</b> <b>W20A</b>	APP CRS <b>198°</b>	Rwy Ldg TDZE Apt Elev	<b>5501</b> <b>2131</b> <b>2131</b>
--	------------------------	-----------------------------	---

# RNAV (GPS) Z RWY 20

SANDPOINT (SZT)

RNP APCH.	MISSED APPROACH: Climb to 6600 direct BILOE and hold, continue climb-in-hold to 6600. *Missed approach requires minimum climb of 318 feet per NM to 4500; if unable to meet climb gradient, see RNAV (GPS) Y RWY 20.
<p><b>⚠</b> Rwy 20 helicopter visibility reduction below 3/4 SM NA. When local altimeter not received, procedure NA.</p> <p><b>❄</b> -1.6°C</p>	

AWOS-2 <b>135.425</b>	SEATTLE CENTER <b>123.95 290.55</b>	UNICOM <b>122.7 (CTAF) ①</b>
--------------------------	--	---------------------------------



6600	BILOE	VGSI and descent angles not coincident (VGSI Angle 3.75/TCH 50).		ELLRA	
		HAKUP 1.6 NM to RW20	GARRT 3 NM to RW20	FAPIK	
		0.9 NM to RW20	3380	3800	
		0.9 NM	0.7 NM	1 NM	4.4 NM
			≤3.77° TCH 55	5100	
			198°		
CATEGORY	A	B	C	D	
LP MDA*	2520-1	389 (400-1)	2520-1 1/8 389 (400-1 1/8)	NA	

NW-1, 16 APR 2026 to 14 MAY 2026

NW-1, 16 APR 2026 to 14 MAY 2026