

WAAS CH 65902 W30A	APP CRS 300°	Rwy Idg TDZE Apt Elev	4500 55 79
--	------------------------	-----------------------------	---------------------------------------

RNAV (GPS) RWY 30

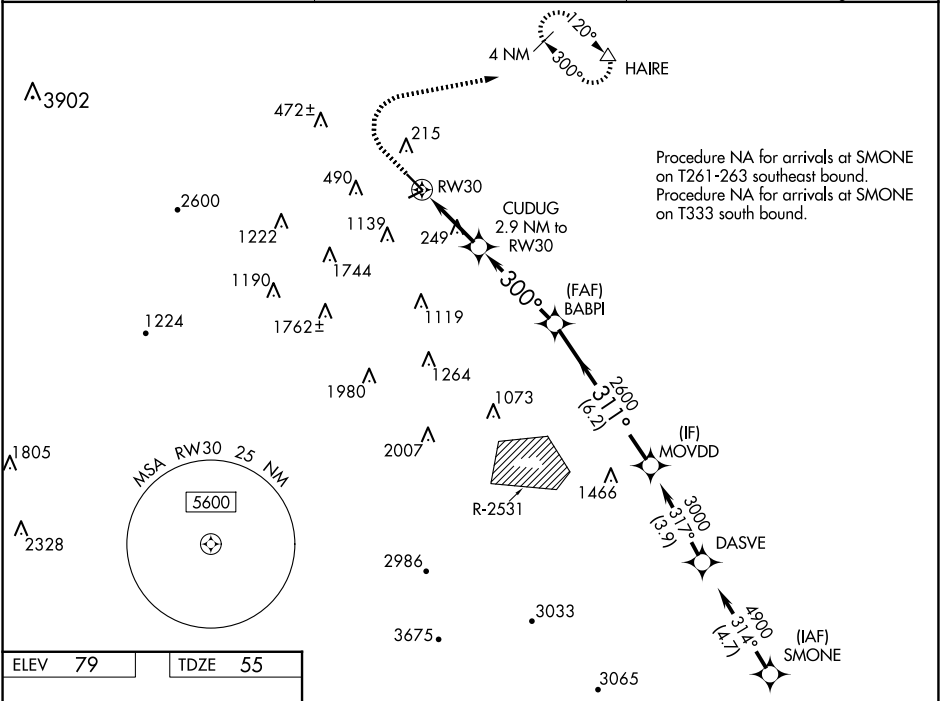
BYRON (C83)

RNP APCH.

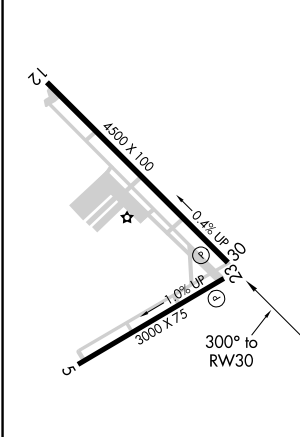
▼ For uncompensated Baro-VNAV systems, LNAV/VNAV NA below -15°C (5°F) or above 15°C (59°F). Circling NA southwest of Rwy 12-30.

MISSED APPROACH: Climb to 1000, then climbing right turn 4000 direct HAIRE and hold, continue climb-in-hold 4000.

AWOS-3 123.775	NORCAL APP CON 123.85 278.3	UNICOM 123.050 (CTAF)
--------------------------	---------------------------------------	---------------------------------

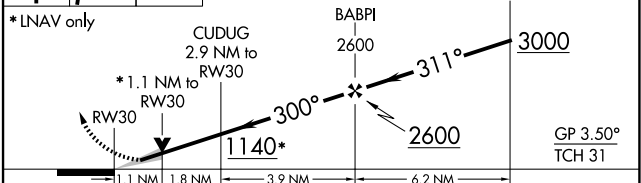


ELEV 79	TDZE 55
---------	---------



REIL Rwy 30
MIRL Rwy 5-23 and 12-30

1000 4000 HAIRE
VGSi and RNAV glidepath not coincident (VGSi Angle 3.50/ TCH 25).



CATEGORY	A	B	C	D
LPV DA		325-7/8	270 (300-7/8)	
LNAV/VNAV DA		404-1 1/8	349 (400-1 1/8)	
LNAV MDA	500-1	445 (500-1)	500-1 3/8	445 (500-1 3/8)
CIRCLING	600-1	521 (600-1)	680-1 3/4 601 (700-1 3/4)	820-2 1/2 741 (800-2 1/2)

RNAV (GPS) RWY 30

SW-2, 16 APR 2026 to 14 MAY 2026

SW-2, 16 APR 2026 to 14 MAY 2026