

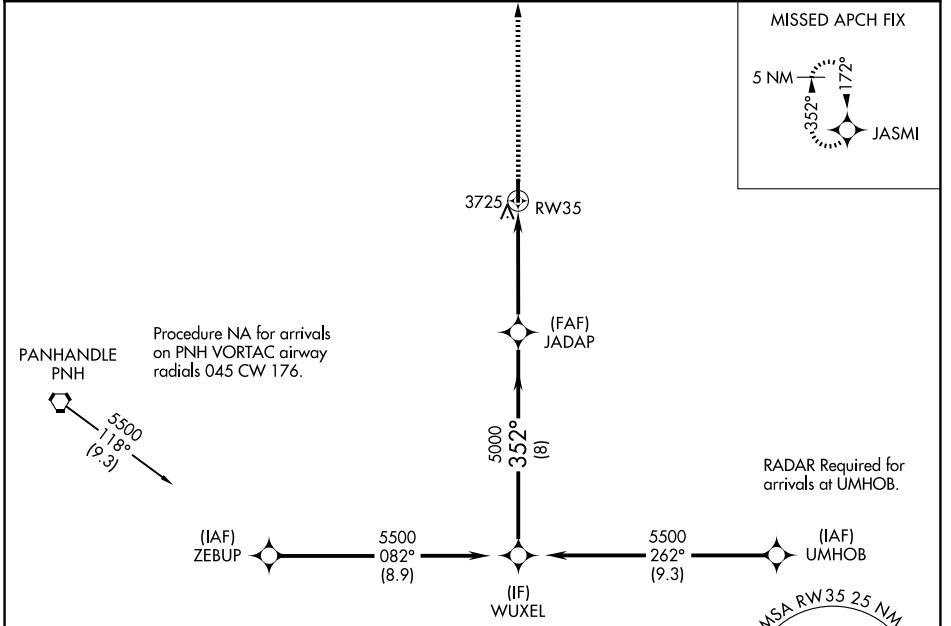
APP CRS <b>352°</b>	Rwy Ldg TDZE Apt Elev	<b>4404</b> <b>3454</b> <b>3454</b>
------------------------	-----------------------------	---

# RNAV (GPS) RWY 35

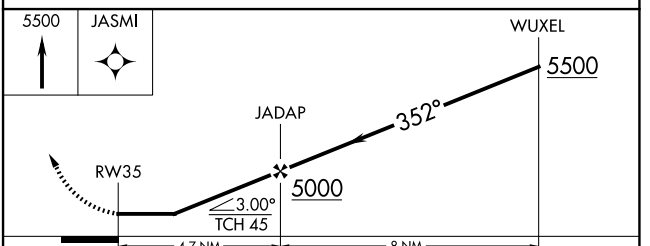
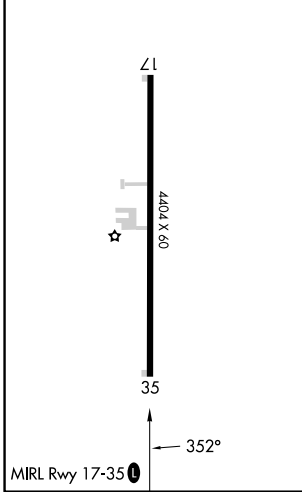
PANHANDLE-CARSON COUNTY (T45)

RNP APCH - GPS.	Use Rick Husband Amarillo Intl altimeter setting; when not received, use Hutchinson County altimeter setting and increase all MDA 40 feet; increase LNAV Cat C visibility to 2. Rwy 35 helicopter visibility reduction below ¾ SM NA.	MISSED APPROACH: Climb to 5500 direct JASMI and hold.
-----------------	---	---

AMA ASOS <b>118.85 350.3</b>	AMARILLO APP CON * <b>119.5 307.0</b>	UNICOM <b>122.7 (CTAF)</b>	<b>123.5</b>
---------------------------------	--	-------------------------------	--------------



ELEV 3454	TDZE 3454
-----------	-----------



CATEGORY	A	B	C	D
LNAV MDA	4100-1	646 (700-1)	4100-1 7/8 646 (700-1 7/8)	NA
CIRCLING	4140-1	686 (700-1)	4140-2 686 (700-2)	NA

SC-2, 16 APR 2026 to 14 MAY 2026

SC-2, 16 APR 2026 to 14 MAY 2026