

| | | |
|--|------------------------|---|
| LOC/DME I-GHO 110.75 Chan 44 (Y) | APP CRS 092° | Rwy Ldg 4300 TDZE 22 Apt Elev 22 |
|--|------------------------|---|

ILS or LOC RWY 9R

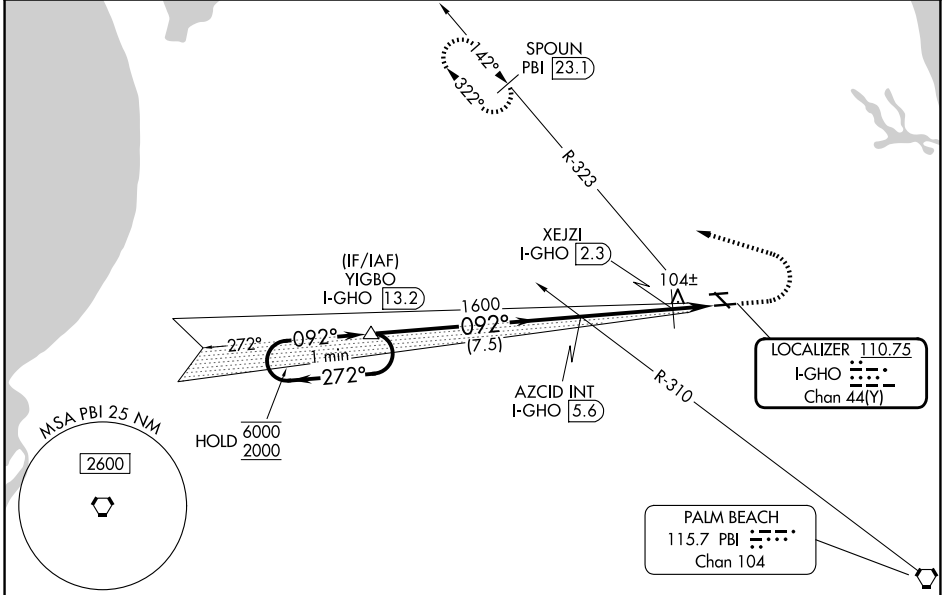
NORTH PALM BEACH COUNTY GENERAL AVIATION (F45)

DME required.

▼ Circling NA to Rwsy 9L and 27R. Rwy 9R helicopter visibility reduction below 3/4 SM NA.
▲ NA

MISSED APPROACH: Climb to 1200 then climbing left turn 2000 on hdg 294° and on PBI VORTAC R-323 to SPOUN/I-PBI 23.1 DME and hold.

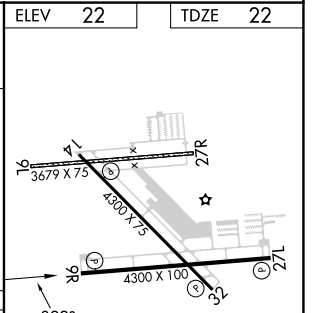
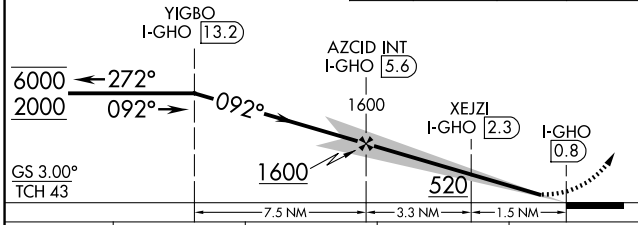
| | | |
|--------------------------|--|-----------------------------------|
| AWOS-3 119.975 | PALM BEACH APP CON 128.3 317.4 | UNICOM 123.075 (CTAF) 0 |
|--------------------------|--|-----------------------------------|



VGSI and ILS glidepath not coincident (VGSI Angle 3.00/TCH 40).
 One Minute Holding Pattern

ELEV 22 | TDZE 22

1200 | 2000 | hdg 294° | PBI R-323 | SPOUN PBI (23.1)



| CATEGORY | A | B | C | D |
|--------------------|----------------------|----------------------|----------------------|------------------------------|
| S-ILS 9R | | 272-3/4 | 250 (300-3/4) | |
| S-LOC 9R | 520-1 | 498 (500-1) | 520-1 3/8 | 498 (500-1 3/8) |
| CIRCLING | 520-1 | 498 (500-1) | 640-2 618 (700-2) | 720-2 1/4 698 (700-2 1/4) |
| XEJZI FIX MINIMUMS | | | | |
| S-LOC 9R | 360-1 | 338 (400-1) | 360-1 1/8 | 338 (400-1 1/8) |
| CIRCLING | 440-1 418 (500-1) | 480-1 458 (500-1) | 640-2 618 (700-2) | 720-2 1/4 698 (700-2 1/4) |

MRL Rwsy 9R-27L and 14-32 0
 REIL Rwsy 9R, 14, 27L and 32 0

FAF to MAP 4.8 NM

| | | | | | |
|---------|------|------|------|------|------|
| Knots | 60 | 90 | 120 | 150 | 180 |
| Min:Seq | 4:48 | 3:12 | 2:24 | 1:55 | 1:36 |

SE-3, 16 APR 2026 to 14 MAY 2026

SE-3, 16 APR 2026 to 14 MAY 2026