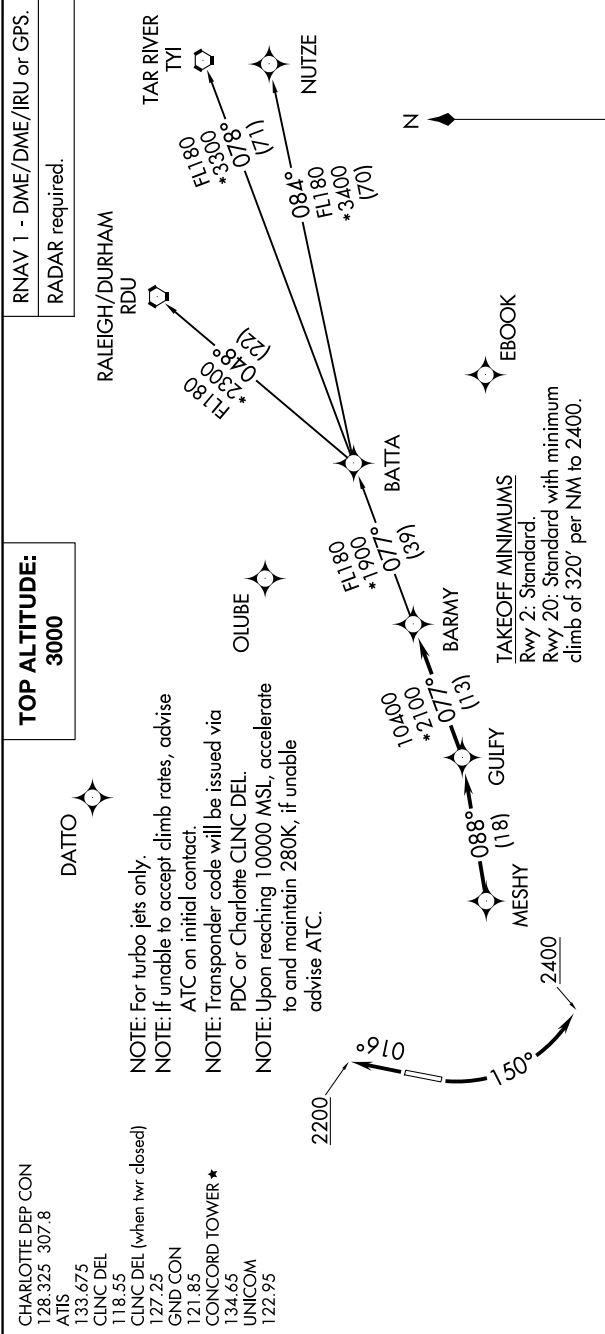


BARMY FIVE DEPARTURE (RNAV)

SE-2, 16 APR 2026 to 14 MAY 2026



DEPARTURE ROUTE DESCRIPTION

TAKEOFF RUNWAY 2: Climb on heading 016° to 2200, then on heading assigned by ATC, thence

TAKEOFF RUNWAY 20: Climbing left turn heading 150° to 2400, then on heading assigned by ATC, thence

. . . . on RADAR vectors to MESHY, then on depicted route to BARMY. Then on assigned transition. Maintain 3000, expect clearance to filed altitude within 10 minutes after departure.

NUTIZE TRANSITION (BARMY5.NUTIZE)
RALEIGH/DURHAM TRANSITION (BARMY5.RDU)
TAR RIVER TRANSITION (BARMY5.TYI)

SE-2, 16 APR 2026 to 14 MAY 2026

NOTE: Chart not to scale.