

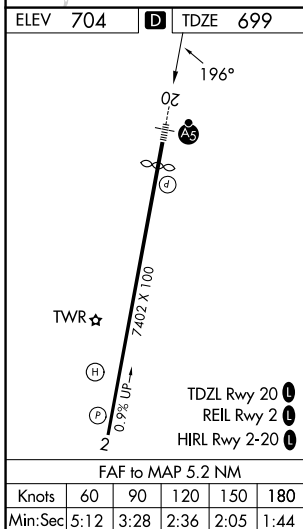
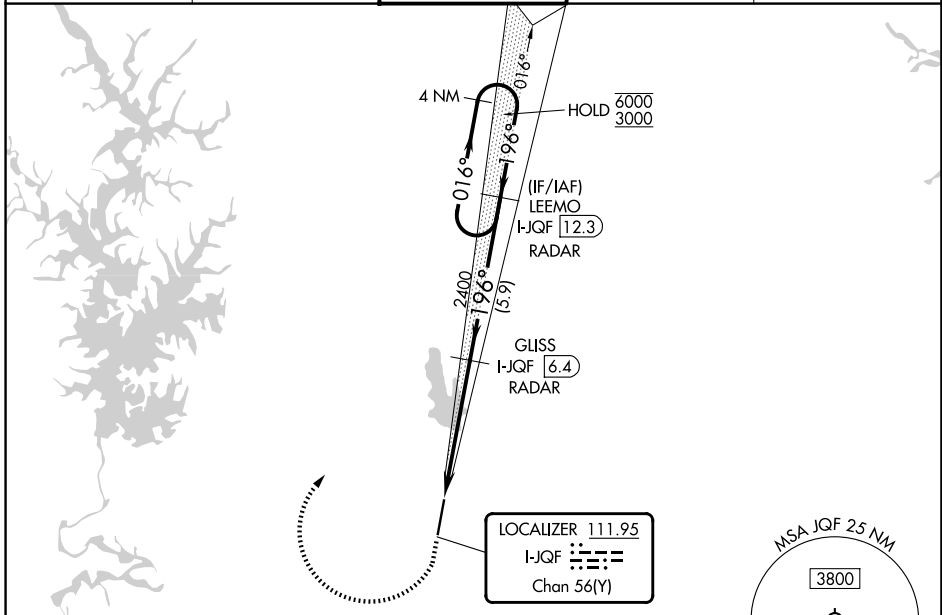
LOC/DME I-JQF <b>111.95</b> Chan <b>56(Y)</b>	APP CRS <b>196°</b>	Rwy Ldg TDZE Apt Elev	<b>6350</b> <b>699</b> <b>704</b>
---	------------------------	-----------------------------	---

# ILS or LOC RWY 20

CONCORD-PADGETT RGNL (JQF)

RNP APCH - GPS. ▼ ▲ NA Rwy 20 helicopter visibility reduction below 3/4 SM NA. Inop table does not apply to S-ILS-20. For inop ALS, increase S-LOC-20 Cats A and B visibility to 1 SM, Cats C and D visibility to 1 1/2 SM.	MALSR 65	MISSED APPROACH: Climb to 1300 then climbing right turn to 3000 direct LEEMO and hold.
--	-------------	--

ATIS <b>133.675</b>	CHARLOTTE APP CON <b>128.325 307.8</b>	CONCORD TOWER ★ <b>134.65 (CTAF)</b>	GND CON <b>121.85</b>	UNICOM <b>122.95</b>
------------------------	---	---	--------------------------	-------------------------



1300	3000	LEEMO I-JQF 12.3	LEEMO I-JQF 12.3	4 NM Holding Pattern
		GLISS I-JQF 6.4 RADAR	GLISS I-JQF 6.4 RADAR	
		I-JQF 1.2	I-JQF 2.8	
		2400	2400	
		1.6 NM	3.6 NM	5.9 NM
		016°	196°	6000/3000
				GS 3.00° TCH 44
CATEGORY	A	B	C	D
S-ILS 20		1041-3/4	342 (400-3/4)	
S-LOC 20	1260-3/4	561 (600-3/4)	1260-1/4	561 (600-1/4)
CIRCLING	1300-1	596 (600-1)	1480-2 1/4 776 (800-2 1/4)	1480-2 1/2 776 (800-2 1/2)

SE-2, 16 APR 2026 to 14 MAY 2026

SE-2, 16 APR 2026 to 14 MAY 2026