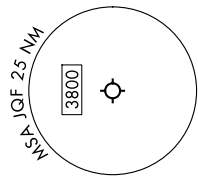
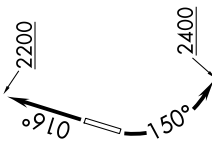
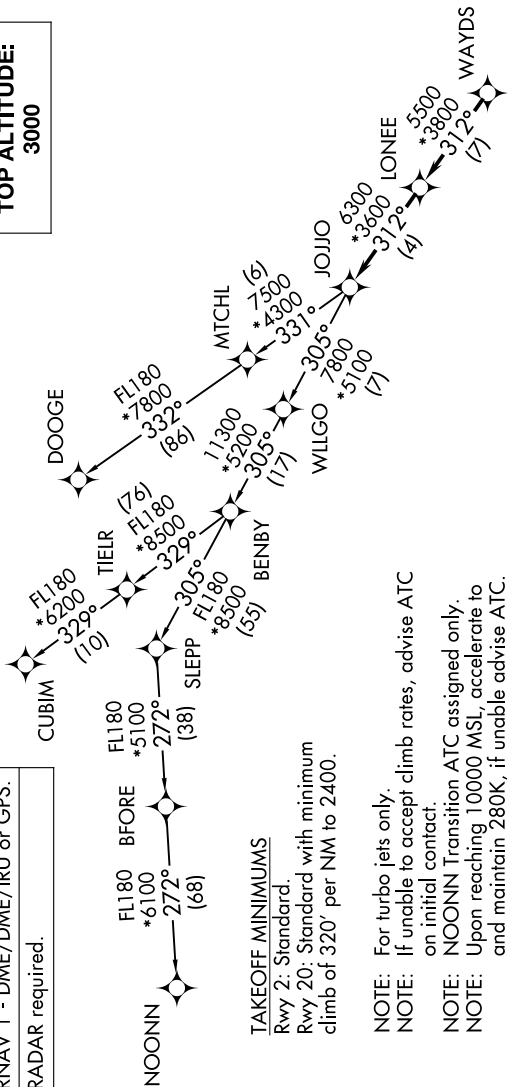


JOJO FIVE DEPARTURE (RNAV)

CHARLOTTE DEP CON
128.325 307.8
ATIS
133.675
CLNC DEL
118.55
CLNC DEL (when hvr closed)
121.85
GND CON
127.25
CONCORD TOWER *
134.65 (CTAF)
UNICOM
122.95



**TOP ALTITUDE:
3000**



NOTE: Chart not to scale.

RNAV 1 - DME/DME/IRU or GPS.
RADAR required.

NOONN
FL180 *6100
272° (68)
BFORE
FL180 *5100
272° (38)
SLEPP
FL180 *5500
305° (155)
BENBY
FL180 *5200
305° (117)
WILGO
FL180 *5100
305° (17)
DOOGE
FL180 *3200
320° (10)
TIELR
FL180 *8500
320° (8)
MTCHL
FL180 *3300
331° (16)
JOJJO
FL180 *5300
312° (4)
LONLEE
FL180 *3800
312° (7)
WAYDS
FL180 *5500
312° (7)

TAKEOFF MINIMUMS

Rwy 2: Standard.
Rwy 20: Standard with minimum
climb of 320' per NM to 2400.

NOTE: For turbo jets only.
NOTE: If unable to accept climb rates, advise ATC on initial contact.
NOTE: NOONN Transition ATC assigned only.
NOTE: Upon reaching 10000 MSL, accelerate to and maintain 280K, if unable advise ATC.

DEPARTURE ROUTE DESCRIPTION

TAKEOFF RUNWAY 2: Climb on heading 016° to 2200, then on heading assigned by ATC, thence. . . .
TAKEOFF RUNWAY 20: Climbing left turn heading 150° to 2400, then on heading assigned by ATC, thence. . . .

. . . on RADAR vectors to WAYDS, then on depicted route to JOJJO. Then on assigned transition. Maintain 3000, expect filed altitude within 10 minutes after departure.

CUBIM TRANSITION (JOJO5.CUBIM)
DOOGE TRANSITION (JOJO5.DOOGE)
NOONN TRANSITION (JOJO5.NOONN)

JOJO FIVE DEPARTURE (RNAV)