

KWEEN FIVE DEPARTURE (RNAV)

CHARLOTTE DEP CON
128.325 307.8
ATIS
133.675
CLNC DEL
118.55
CLNC DEL (when twr closed)
127.25
GND CON
121.85
CONCORD TOWER*
134.65 (CTAF)
UNICOM
122.95

RNAV 1 - DME/DME/IRU or GPS. 2200
RADAR required.

**TOP ALTITUDE:
3000**

TAKEOFF MINIMUMS
Rwy 2: Standard.
Rwy 20: Standard with minimum
climb of 320' per NM to 2400.

- NOTE: For turbo jets only.
- NOTE: Transponder code will be issued via PDC or Charlotte CLNC DEL.
- NOTE: If unable to accept climb rates, advise ATC on initial contact.
- NOTE: Upon reaching 10000 MSL, accelerate to and maintain 280K, if unable advise ATC.

NOTE: Chart not to scale.

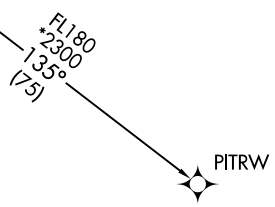
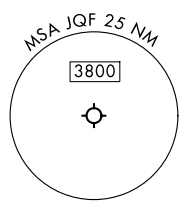
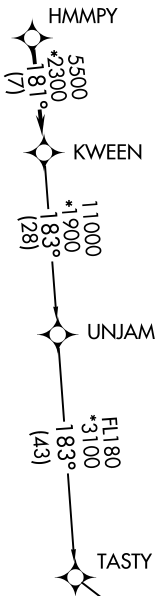
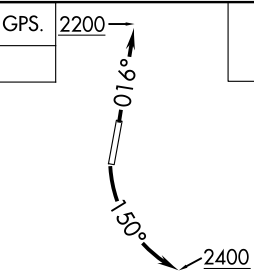
DEPARTURE ROUTE DESCRIPTION

TAKEOFF RUNWAY 2: Climb on heading 016° to 2200, then on heading assigned by ATC, thence. . . .

TAKEOFF RUNWAY 20: Climbing left turn heading 150° to 2400, then on heading assigned by ATC, thence. . . .

. . . .on RADAR vectors to HMMPY, then on track 181° to KWEEN. Then on assigned transition. Maintain 3000, expect filed altitude within 10 minutes after departure.

PITRW TRANSITION (KWEEN5.PITRW)
UNJAM TRANSITION (KWEEN5.UNJAM)



SE-2, 16 APR 2026 to 14 MAY 2026

SE-2, 16 APR 2026 to 14 MAY 2026