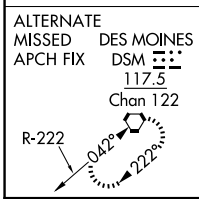
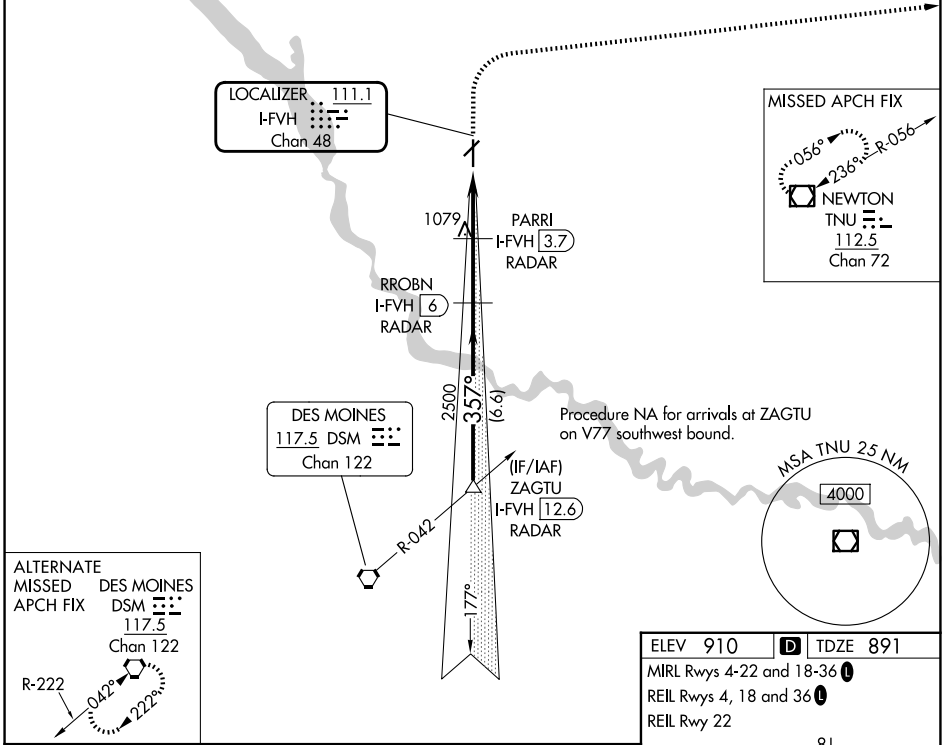


LOC/DME I-FVH <b>111.1</b> Chan 48	APP CRS <b>357°</b>	Rwy Ldg TDZE 5500 891	Apt Elev 910
--	------------------------	-----------------------------	-----------------

# ILS or LOC RWY 36

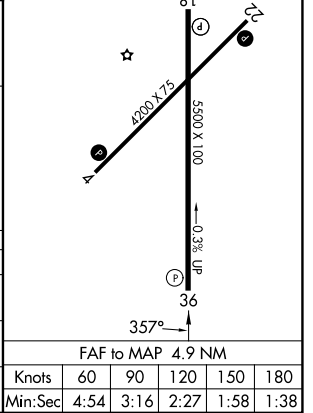
ANKENY RGNL (IKV)

DME or RADAR required.		MISSED APPROACH: Climb to 2000 then climbing right turn to 4000 direct TNU VOR/DME and hold.
AWOS-3 <b>119.175</b>	DES MOINES APP CON <b>123.9 307.15</b>	UNICOM <b>122.9 (CTAF)</b>



ELEV 910	D TDZE 891
MRL Rwy 4-22 and 18-36	
REIL Rwy 4, 18 and 36	
REIL Rwy 22	

ZAGTU I-FVH 12.6 RADAR	RROBN I-FVH 6 RADAR	PARRI I-FVH 3.7 RADAR	I-FVH 2.3	I-FVH 1.1
3000	2500	2000	4000	TNU
GS 3.00° TCH 52	357°	2500	1760	
6.6 NM	2.3 NM	1.4 NM	1.3 NM	
CATEGORY	A	B	C	D
S-ILS 36	1091-3/4		200 (200-3/4)	
S-LOC 36	1340-1 449 (500-1)		1340-1 3/8 449 (500-1 3/8)	
CIRCLING	1560-1 650 (700-1)		1560-1 3/8 850 (700-1 3/8) 1760-2 3/4 850 (900-2 3/4)	



NC-3, 16 APR 2026 to 14 MAY 2026

NC-3, 16 APR 2026 to 14 MAY 2026