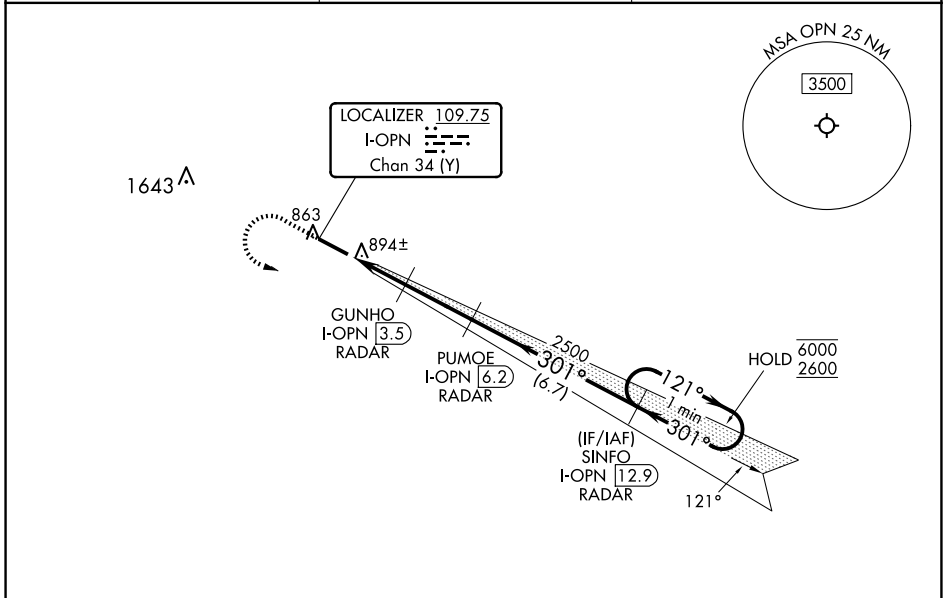


LOC/DME I-OPN <b>109.75</b> Chan 34 (Y)	APP CRS <b>301°</b>	Rwy Idg <b>4962</b> TDZE <b>796</b> Apt Elev <b>798</b>
---	------------------------	---

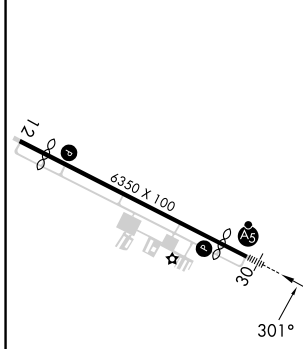
**ILS or LOC RWY 30**  
THOMASTON-UPSON COUNTY (OPN)

RNP APCH - GPS.	MALSRL 	MISSED APPROACH: Climb to 1500 then climbing left turn to 2600 direct SINFO and hold.
DME or RADAR required.		
▼ ▲ For inop ALS, increase S-LOC 30 Cats C, D visibility to 1 SM.		

AWOS-3 <b>133.975</b>	ATLANTA APP CON * <b>124.2 279.6</b>	UNICOM <b>122.8 (CTAF) 0</b>
--------------------------	---	---------------------------------



ELEV 798	<b>D</b>	TDZE 796
----------	----------	----------



MIRL Rwy 12-30 0	CATEGORY					
FAC to MAP 5.2 NM	A					
	S-ILS 30		1016-1/2 220 (300-1/2)			
	S-LOC 30		1160-1/2 364 (400-1/2) 1160-5/8 364 (400-5/8)			
	CIRCLING		1240-1 442 (500-1) 1260-1 462 (500-1) 1260-1 1/2 462 (500-1 1/2) 1680-3 882 (900-3)			
	Knots	60	90	120	150	180
	Min:Sec	5:12	3:28	2:36	2:05	1:44

SE-4, 16 APR 2026 to 14 MAY 2026

SE-4, 16 APR 2026 to 14 MAY 2026