

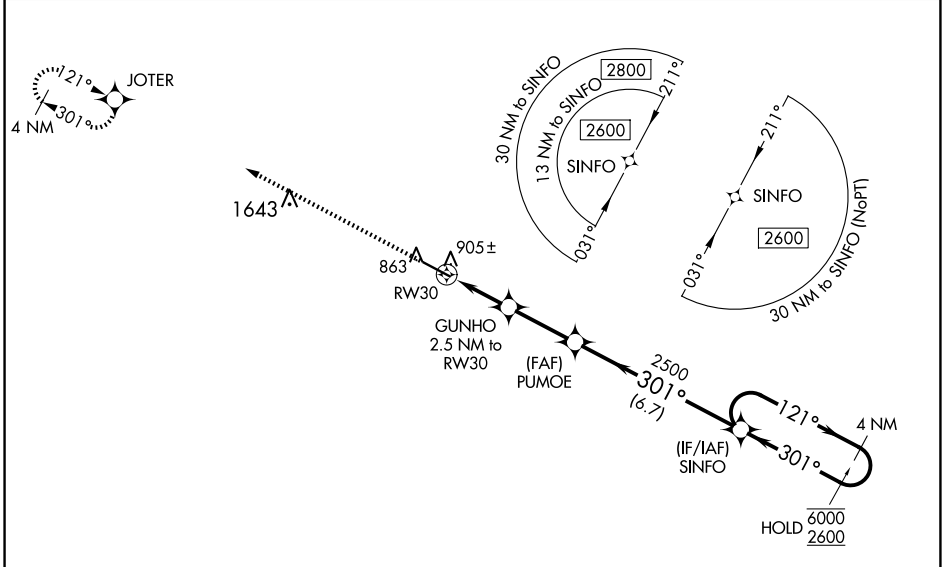
WAAS CH 58215 W30A	APP CRS 301°	Rwy ldg TDZE Apt Elev	4962 796 798
--	------------------------	-----------------------------	---

RNAV (GPS) RWY 30

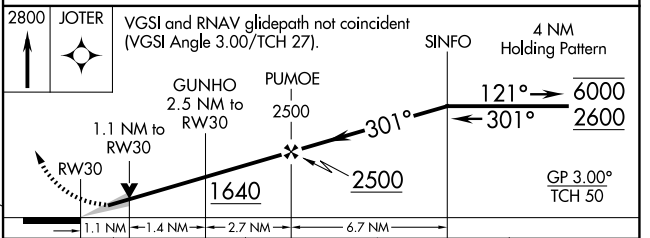
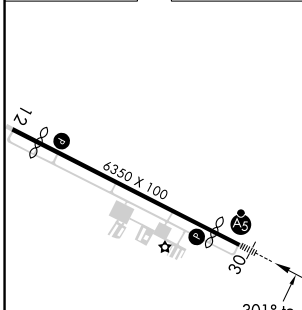
THOMASTON-UPSON COUNTY (OPN)

RNP APCH-GPS.		MALSR 	MISSED APPROACH: Climb to 2800 direct JOTER and hold.
<p> For uncompensated Baro-VNAV systems, LNAV/VNAV NA below -16°C or above 54°C. For inop ALS, increase LNAV/VNAV all Cats visibility to 7/8 SM and LNAV Cat C/D visibility to 1 SM.</p>			

AWOS-3 133.975	ATLANTA APP CON * 124.2 279.6	UNICOM 122.8 (CTAF)
--------------------------	---	-------------------------------



ELEV 798	D	TDZE 796
----------	----------	----------



CATEGORY	A	B	C	D
LPV DA		996-1/2	200 (200-1/2)	
LNAV/VNAV DA		1086-1/2	290 (300-1/2)	
LNAV MDA	1160-1/2	364 (400-1/2)	1160-5/8	364 (400-5/8)
CIRCLING	1220-1	1260-1	1260-1 1/2	1680-3
	422 (500-1)	462 (500-1)	462 (500-1 1/2)	882 (900-3)

SE-4, 16 APR 2026 to 14 MAY 2026

SE-4, 16 APR 2026 to 14 MAY 2026