

# RNAV (GPS) Y RWY 21

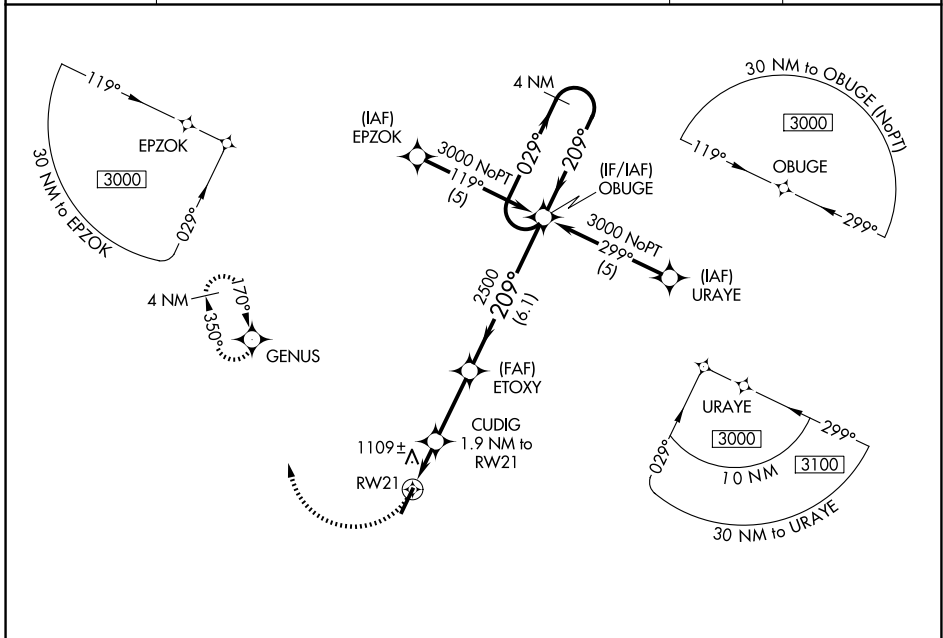
GEORGETOWN-SCOTT COUNTY RGNL (27K)

APP CRS <b>209°</b>	Rwy Ldg <b>5498</b>
	TDZE <b>948</b>
	Apt Elev <b>948</b>

**NA** DME/DME RNP-0.3 NA. VDP NA with Lexington altimeter setting. When local altimeter setting not received, use Lexington altimeter setting and increase all MDAs 40 feet, increase LNAV Cats C/D and Circling Cat D visibility ¼ SM.

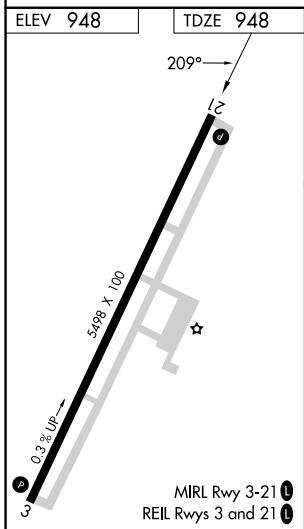
**MISSED APPROACH:** Climbing right turn to 3000 direct GENUS and hold.

AWOS-3 <b>119.975</b>	LEXINGTON APP CON <b>120.15 259.3</b> (040°-220°) <b>120.75 298.9</b> (221°-039°)	CLNC DEL <b>127.425</b>	UNICOM <b>123.0</b> (CTAF) <b>0</b>
--------------------------	--	----------------------------	--



SE-1, 16 APR 2026 to 14 MAY 2026

SE-1, 16 APR 2026 to 14 MAY 2026



	CUDIG 1.9 NM to RW21		ETOXY		OBUGE 4 NM Holding Pattern	
	1.2 NM to RW21	0.7 NM	3.04° TCH 30	2.8 NM	6.1 NM	3000
	1.2 NM	0.7 NM	2.8 NM	6.1 NM		
CATEGORY	A	B	C	D		
LNAV MDA	1360-1	412 (500-1)	1360-1¼	412 (500-1¼)		
CIRCLING	1420-1	472 (500-1)	1560-1¾ 612 (700-1¾)	1660-2¼ 712 (800-2¼)		