

WAAS CH 48909 W21A	APP CRS 209°	Rwy Ldg TDZE 948 Apt Elev 948
--	------------------------	---

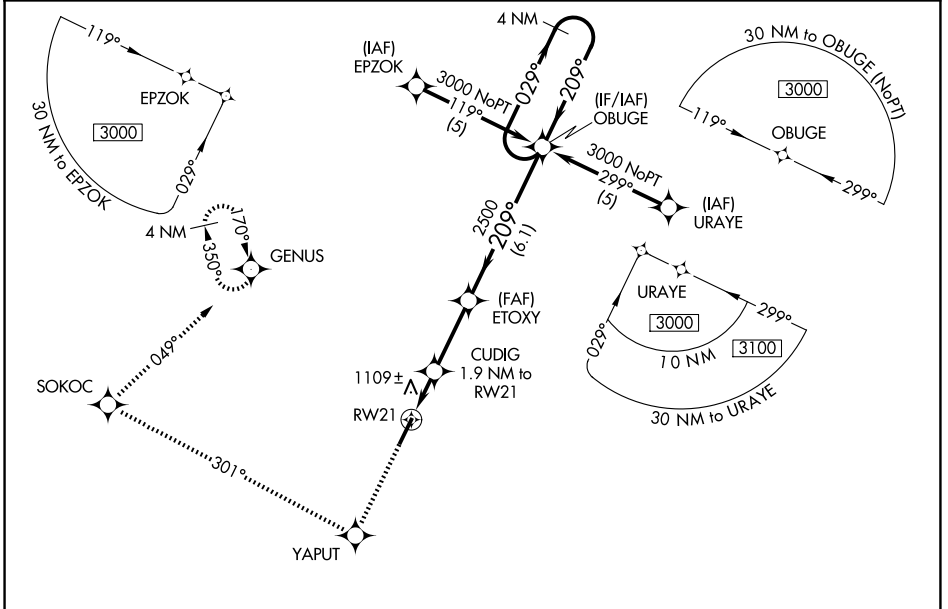
RNAV (GPS) Z RWY 21

GEORGETOWN-SCOTT COUNTY RGNL (27K)

NA For uncompensated Baro-VNAV systems, LNAV/VNAV NA below -16° C (4° F) or above 46° C (114° F). DME/DME RNP-0.3 NA. When local altimeter setting not received, use Lexington altimeter setting and increase LPV DA to 1186, LNAV/VNAV DA to 1460, and all MDA 40 feet; increase LPV all Cats and LNAV Cats C/D and Circling Cat D visibility ¼ SM. Baro-VNAV and VDP NA with Lexington altimeter setting.

MISSED APPROACH: Climb to 3000 direct YAPUT and right turn on track 301° to SOKOC and right turn on track 049° to GENUS and hold.

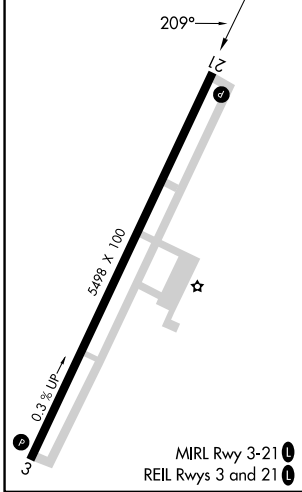
AWOS-3 119.975	LEXINGTON APP CON 120.15 259.3 (040°-220°) 120.75 298.9 (221°-039°)	CLNC DEL 127.425	UNICOM 123.0 (CTAF) 0
--------------------------	--	----------------------------	--



SE-1, 16 APR 2026 to 14 MAY 2026

SE-1, 16 APR 2026 to 14 MAY 2026

ELEV 948	TDZE 948
-----------------	-----------------



3000	YAPUT	SOKOC	GENUS	4 NM Holding Pattern
	↑	↻ Ir 301°	↻ Ir 049°	
*LNAV only.				
	CUDIG 1.9 NM to RW21	ETOXY 2500	OBUGE	3000
	*1.2 NM to RW21	2500	029°	← 209°
	RW21	*1580	2500	GP 3.00° TCH 30
	1.2 NM	0.7 NM	2.8 NM	6.1 NM
CATEGORY	A	B	C	D
LPV DA		1148-¾	200 (200-¾)	
LNAV/VNAV DA		1422-1¾	474 (500-1¾)	
LNAV MDA	1360-1	412 (500-1)	1360-1¼	412 (500-1¼)
CIRCLING	1420-1	472 (500-1)	1560-1¾ 612 (700-1¾)	1660-2¼ 712 (800-2¼)