

NORRA ONE DEPARTURE (OBSTACLE) (RNAV)

RNAV 1 - GPS.

LOS ANGELES CENTER
124.2 343.6
AWOS-3PT
118.375
CTAF
122.7

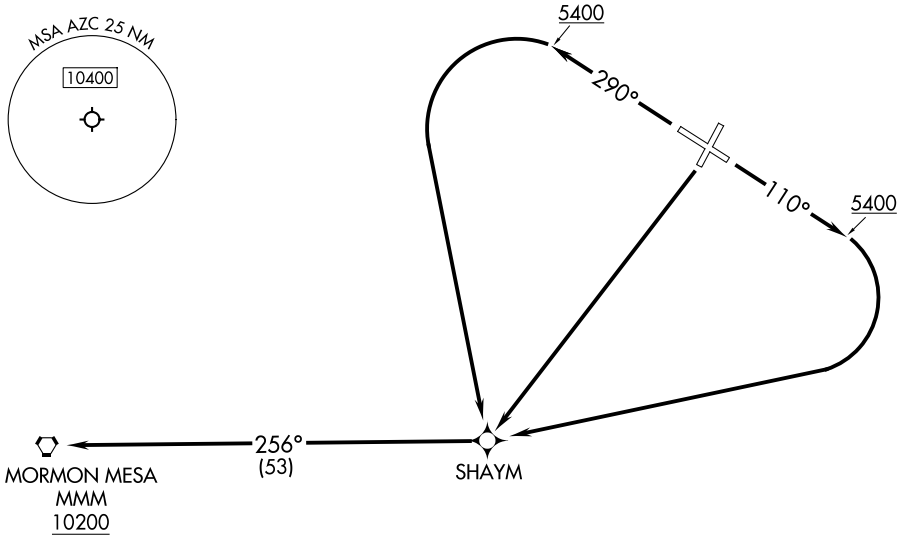
TAKEOFF MINIMUMS

Rwy 2: NA - Obstacles.

Rwy 11: Standard.

Rwy 20: Standard with minimum climb of 240' per NM to 5600.

Rwy 29: Standard with minimum climb of 210' per NM to 5900.



TAKEOFF OBSTACLE NOTES

Rwy 11: Vegetation, trees beginning 16' from DER, 213' left of centerline, up to 4861' MSL.

Rwy 20: Tree 27' from DER, 275' left of centerline, 4843' MSL.

Vegetation 45' from DER, 26' right of centerline, 4843' MSL.

Vehicles on road beginning 67' from DER, 389' left of centerline, up to 4853' MSL.

Tree 1.8 NM from DER, 2971' right of centerline, 5118' MSL.

Rwy 29: Sign, tree beginning 15' from DER, 123' right of centerline, up to 5' AGL/4850' MSL.

Vegetation 60' from DER, 46' left of centerline, 4849' MSL.

NOTE: Chart not to scale.

DEPARTURE ROUTE DESCRIPTION

TAKEOFF RUNWAY 2: NA - Obstacles.

TAKEOFF RUNWAY 11: Climb on heading 110° to 5400, then right turn direct SHAYM, thence. . . .

TAKEOFF RUNWAY 20: Climb direct SHAYM, thence. . . .

TAKEOFF RUNWAY 29: Climb on heading 290° to 5400, then left turn direct SHAYM, thence. . . .

. . . .on track 256° to MMM VORTAC. Cross MMM VORTAC at or above 10200 before proceeding on course.

NORRA ONE DEPARTURE (OBSTACLE) (RNAV)

SW-4, 16 APR 2026 to 14 MAY 2026

SW-4, 16 APR 2026 to 14 MAY 2026