

WAAS CH 86440 W11A	APP CRS 109°	Rwy Idg TDZE Apt Elev	6300 4854 4874
--	------------------------	-----------------------------	---

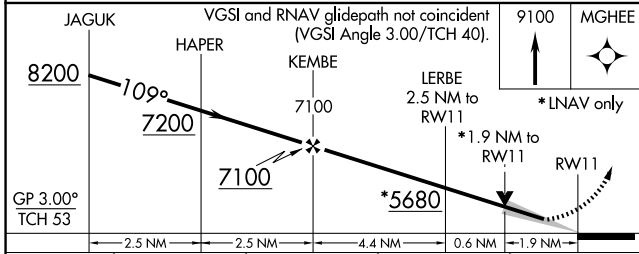
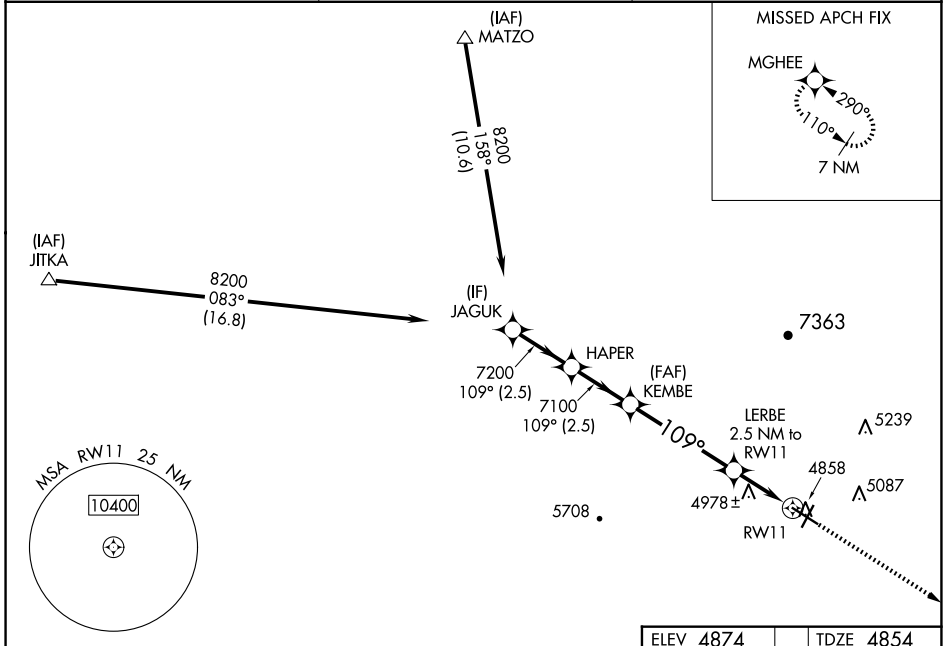
RNAV (GPS) RWY 11

COLORADO CITY MUNI (AZC)

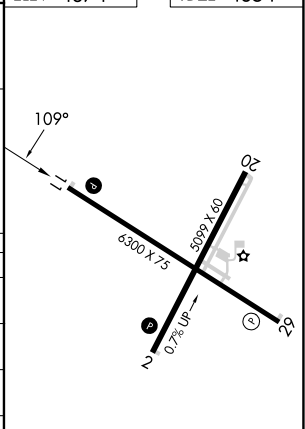
⚠ For uncompensated Baro-VNAV systems, LNAV/VNAV NA below -24°C (-11°F) or above 51°C (125°F). Circling NA for Cat D north of Rwy 11-29. DME/DME RNP-0.3 NA.

MISSED APPROACH: Climb to 9100 direct MGHEE and hold, continue climb-in-hold to 9100.
#Missed approach requires minimum climb of 240 feet per NM to 7500.

AWOS-3PT 118.375	LOS ANGELES CENTER 124.2 343.6	UNICOM 122.7 (CTAF)
----------------------------	--	-------------------------------



ELEV 4874	TDZE 4854
-----------	-----------



CATEGORY	A	B	C	D
LPV DA#	5104-1 250 (300-1)			
LPV DA	5297-1½ 443 (500-1½)			
LNAV/VNAV DA	5463-2½ 609 (600-2½)			
LNAV MDA	5500-1 646 (700-1)	5500-1⅞ 646 (700-1⅞)		
C CIRCLING	5500-1 626 (700-1)	5520-1 646 (700-1)	6880-3 2006 (2100-3)	

REIL Rwy 11 **Ⓛ**
REIL Rwy 29
MIRL Rwys 11-29 and 2-20 **Ⓛ**

SW-4, 16 APR 2026 to 14 MAY 2026

SW-4, 16 APR 2026 to 14 MAY 2026