

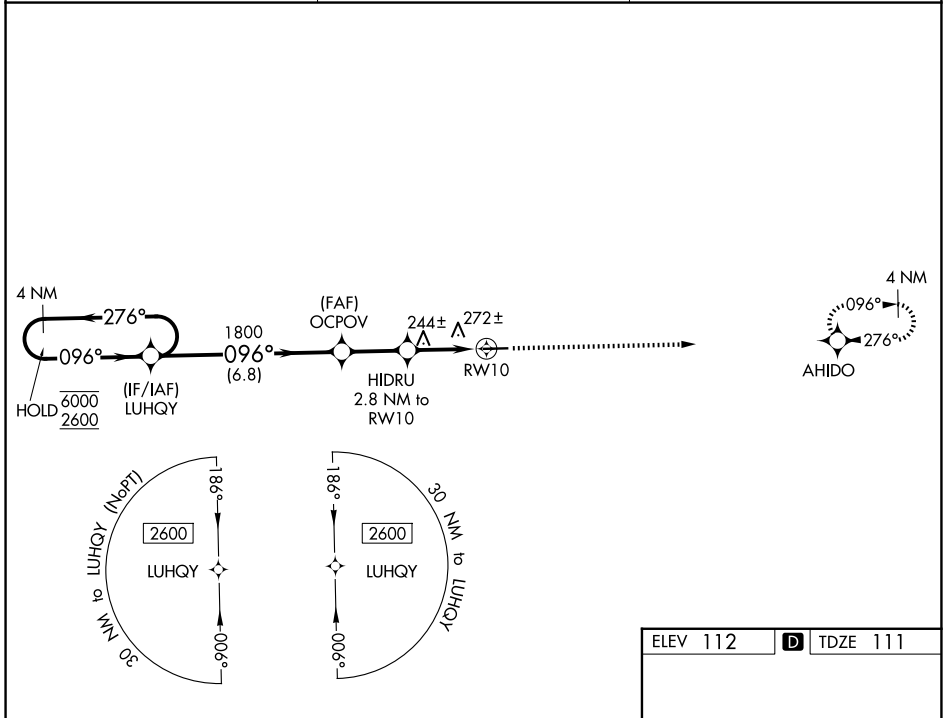
WAAS CH 45914 W10A	APP CRS 096°	Rwy Ldg TDZE 4651 111	Apt Elev 112
----------------------------------------	------------------------	-------------------------------------------	------------------------

RNAV (GPS) RWY 10

CLAXTON-EVANS COUNTY (C'WV)

RNP APCH - GPS.	MISSED APPROACH: Climb to 2600 direct AHIDO and hold.
<p>▼ Rwy 10 helicopter visibility reduction below ¼ SM NA.</p> <p>▲</p>	

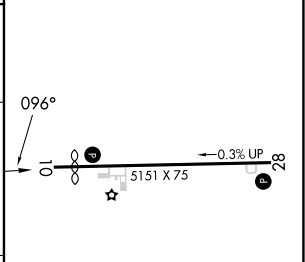
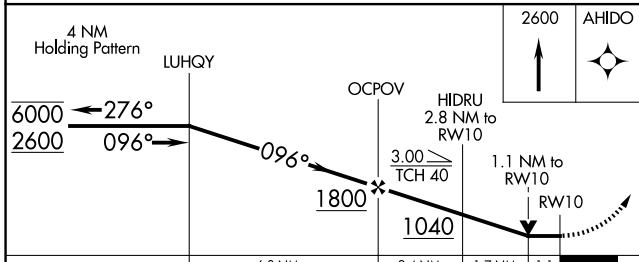
AWOS-3 120.075	JACKSONVILLE CENTER 132.925 363.2	UNICOM 122.8 (CTAF) 1
--------------------------	---------------------------------------------	----------------------------------------



SE-4, 16 APR 2026 to 14 MAY 2026

SE-4, 16 APR 2026 to 14 MAY 2026

ELEV 112	D TDZE 111
----------	-------------------



CATEGORY	A	B	C	D
LP MDA	500-1	389 (400-1)	500-1½	389 (400-1½)
LNAV MDA	540-1	429 (500-1)	540-1¼	429 (500-1¼)
CIRCLING	580-1 468 (500-1)	780-1 668 (700-1)	860-2¼ 748 (800-2¼)	860-2½ 748 (800-2½)

MIRL Rwy 10-28 **1**
REIL Rwys 10 and 28 **1**