

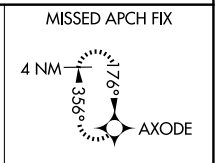
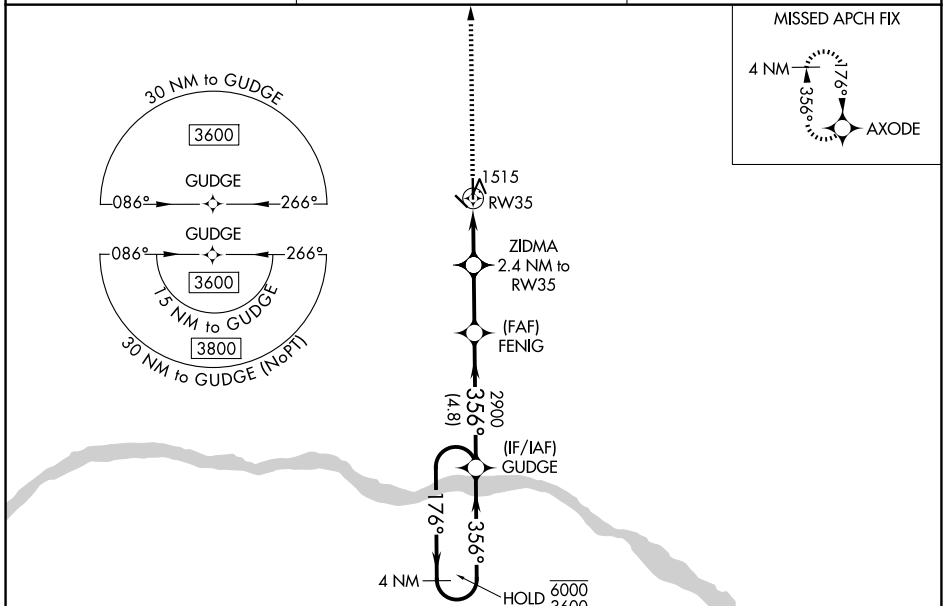
| | | |
|--|------------------------|---|
| WAAS CH 62934 W35A | APP CRS 356° | Rwy Ldg 4200 TDZE 1320 Apt Elev 1325 |
|--|------------------------|---|

RNAV (GPS) RWY 35

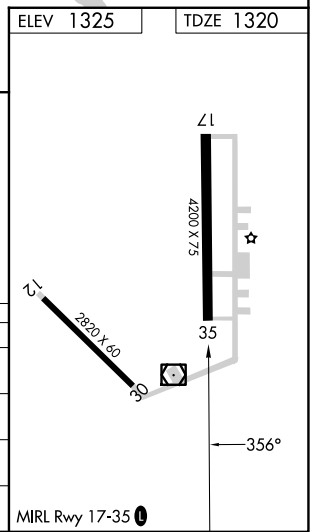
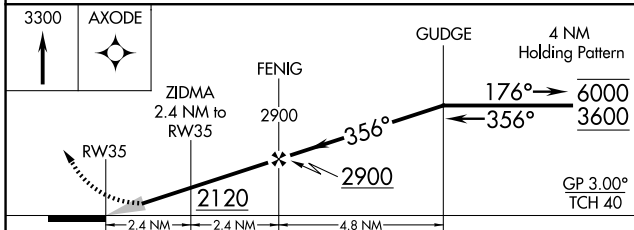
SCRIBNER STATE (SCB)

| | |
|--|---|
| RNP APCH - GPS. | MISSED APPROACH: Climb to 3300 direct AXODE and hold. |
| <p>NA Baro-VNAV NA. Circling Rwy 17 NA at night. Use FET altimeter setting; when not received, use AHQ altimeter setting and increase LPV DA to 1629 feet; increase LNAV/VNAV DA to 1767 feet and all visibilities 1/8 SM. Increase all MDAs 40 feet.</p> | |

| | | |
|------------------------------|--|----------------------|
| FET AWOS-3 121.275 | OMAHA APP CON 135.875 354.05 | CTAF 122.9 |
|------------------------------|--|----------------------|



| | |
|-----------|-----------|
| ELEV 1325 | TDZE 1320 |
|-----------|-----------|



| CATEGORY | A | B | C | D |
|--------------|------------|-----------------|---|----|
| LPV DA | 1606-7/8 | 286 (300-7/8) | | NA |
| LNAV/VNAV DA | 1744-1 1/4 | 424 (500-1 1/4) | | NA |
| LNAV MDA | 1840-1 | 520 (600-1) | | NA |
| CIRCLING | 1900-1 | 575 (600-1) | | NA |

NC-2, 16 APR 2026 to 14 MAY 2026

NC-2, 16 APR 2026 to 14 MAY 2026