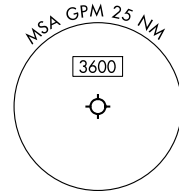


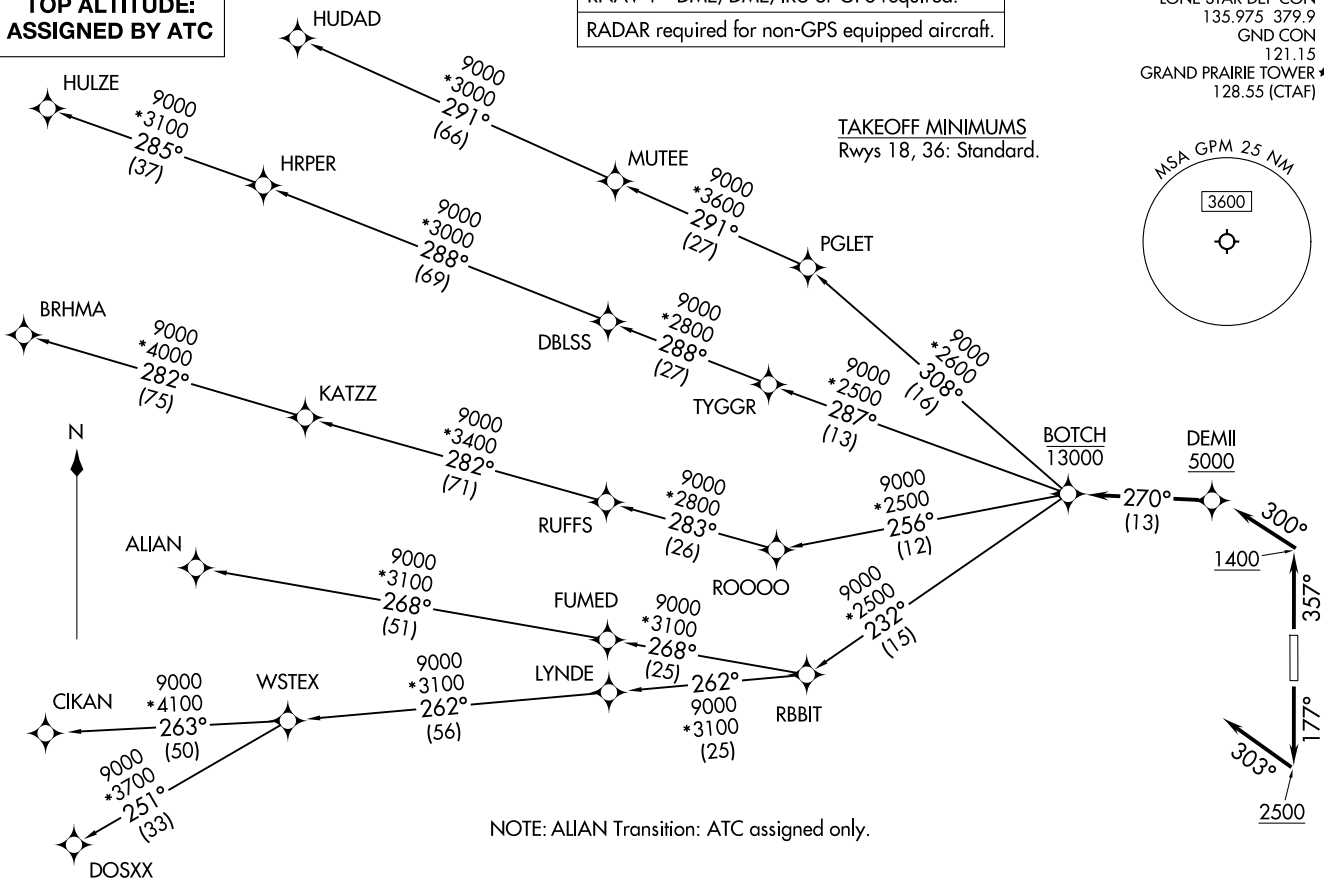
RNAV 1 - DME/DME/IRU or GPS required.  
RADAR required for non-GPS equipped aircraft.

LONE STAR DEP CON  
135.975 379.9  
GND CON  
121.15  
GRAND PRAIRIE TOWER ★  
128.55 (CTAF)



TAKEOFF MINIMUMS  
Rwys 18, 36: Standard.

TOP ALTITUDE:  
ASSIGNED BY ATC



NOTE: ALIAN Transition: ATC assigned only.

(CONTINUED ON FOLLOWING PAGE)

NOTE: Chart not to scale.

BOTCH ONE DEPARTURE (RNAV)  
(BOTCH1 .BOTCH) 17ZAPR25

GRAND PRAIRIE, TEXAS  
GRAND PRAIRIE MUNI (GPM)

(BOTCH1 .BOTCH) 25107  
BOTCH ONE DEPARTURE (RNAV)

AL-9209 (FAA)  
GRAND PRAIRIE MUNI (GPM)  
GRAND PRAIRIE, TEXAS

**BOTCH ONE DEPARTURE (RNAV)**



**DEPARTURE ROUTE DESCRIPTION**

TAKEOFF RUNWAY 18: Climb on heading 177° to 2500, then on heading 303° or as assigned by ATC, for vectors to cross DEMII at or above 5000, thence. . .

TAKEOFF RUNWAY 36: Climb on heading 357° to 1400, then on heading 300° or as assigned by ATC, for vectors to cross DEMII at or above 5000, thence. . .

. . . on track 270° to cross BOTCH at or below 13000, then on (transition). Maintain ATC assigned altitude, expect filed altitude 10 minutes after departure.

ALIAN TRANSITION (BOTCH1.ALIAN)

BRHMA TRANSITION (BOTCH1.BRHMA)

CIKAN TRANSITION (BOTCH1.CIKAN)

DOSXX TRANSITION (BOTCH1.DOSXX)

HUDAD TRANSITION (BOTCH1.HUDAD)

HULZE TRANSITION (BOTCH1.HULZE)

WSTEX TRANSITION (BOTCH1.WSTEX)

SC-2, 16 APR 2026 to 14 MAY 2026

SC-2, 16 APR 2026 to 14 MAY 2026