

GARLAND SIX DEPARTURE  
(GARL6.TT) 17APR25  
GARLAND SIX DEPARTURE  
GRAND PRAIRIE, TEXAS  
(GPM) GRAND PRAIRIE MUNI (GPM)

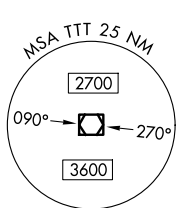
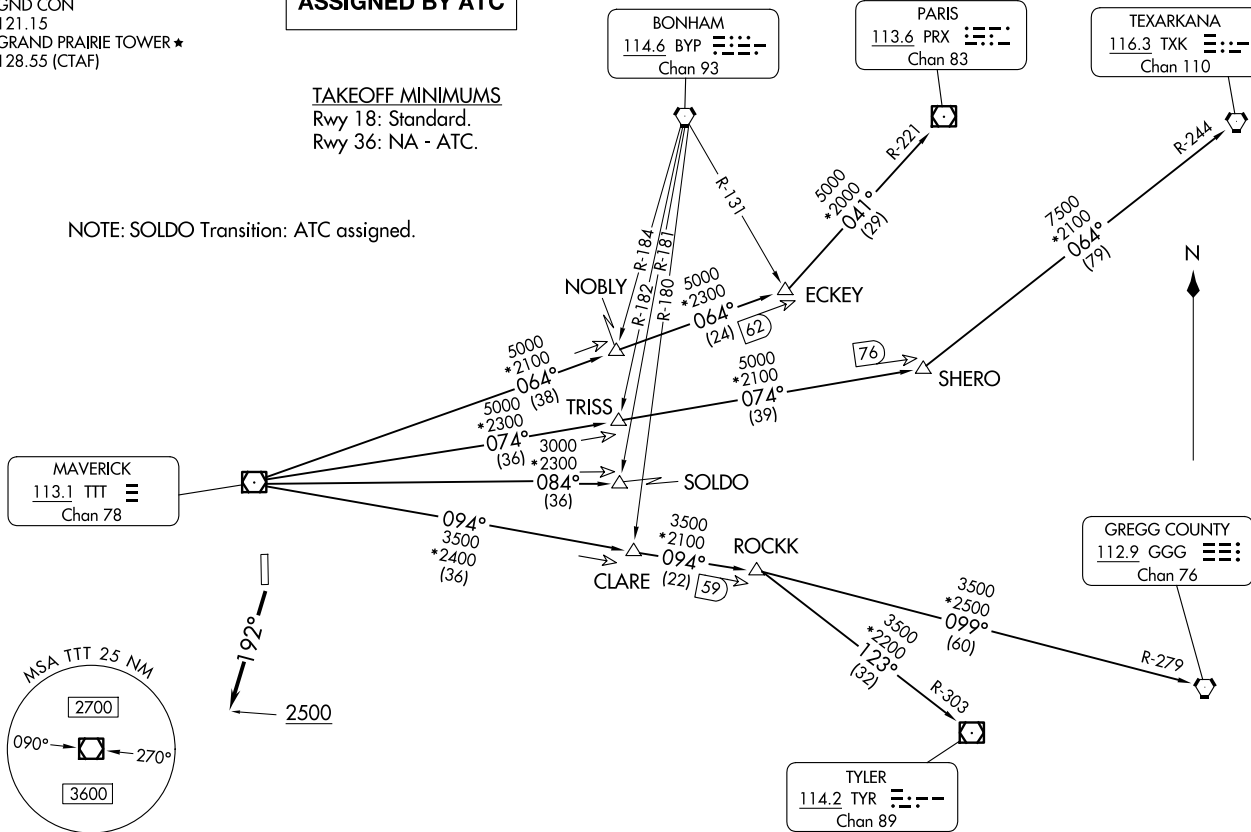
LONE STAR DEP CON  
135.975 379.9  
GND CON  
121.15  
GRAND PRAIRIE TOWER ★  
128.55 (CTAF)

**TOP ALTITUDE:  
ASSIGNED BY ATC**

TAKEOFF MINIMUMS  
Rwy 18: Standard.  
Rwy 36: NA - ATC.

RADAR and DME required.

NOTE: SOLDO Transition: ATC assigned.



NOTE: Chart not to scale.

(CONTINUED ON FOLLOWING PAGE)

(GARL6.TT) 25107  
GARLAND SIX DEPARTURE  
AL-9209 (FAA)  
GRAND PRAIRIE MUNI (GPM)  
GRAND PRAIRIE, TEXAS

# GARLAND SIX DEPARTURE



## DEPARTURE ROUTE DESCRIPTION

TAKEOFF RUNWAY 18: Climb on heading 192° to 2500 before proceeding on course.

When entering controlled airspace, fly assigned heading for RADAR vectors to appropriate route. Maintain ATC assigned altitude.

GREGG COUNTY TRANSITION (GARL6.GGG): From over TTT VOR/DME on TTT R-094 to ROCKK, then on GGG R-279 to GGG VORTAC.

PARIS TRANSITION (GARL6.PRX): From over TTT VOR/DME on TTT R-064 to ECKEY, then on PRX R-221 to PRX VOR/DME.

SOLDO TRANSITION (GARL6.SOLDO): From over TTT VOR/DME on TTT R-084 to SOLDO.

TEXARKANA TRANSITION (GARL6.TXK): From over TTT VOR/DME on TTT R-074 to SHERO, then on TXK R-244 to TXK VORTAC.

TYLER TRANSITION (GARL6.TYR): From over TTT VOR/DME on TTT R-094 to ROCKK, then on TYR R-303 to TYR VOR/DME.

SC-2, 16 APR 2026 to 14 MAY 2026

SC-2, 16 APR 2026 to 14 MAY 2026