

RADAR and DME required.

**TOP ALTITUDE:
ASSIGNED BY ATC**

LONE STAR DEP CON
135.975 379.9
GND CON
121.15
GRAND PRAIRIE TOWER ★
128.55 (CTAF)

TAKEOFF MINIMUMS

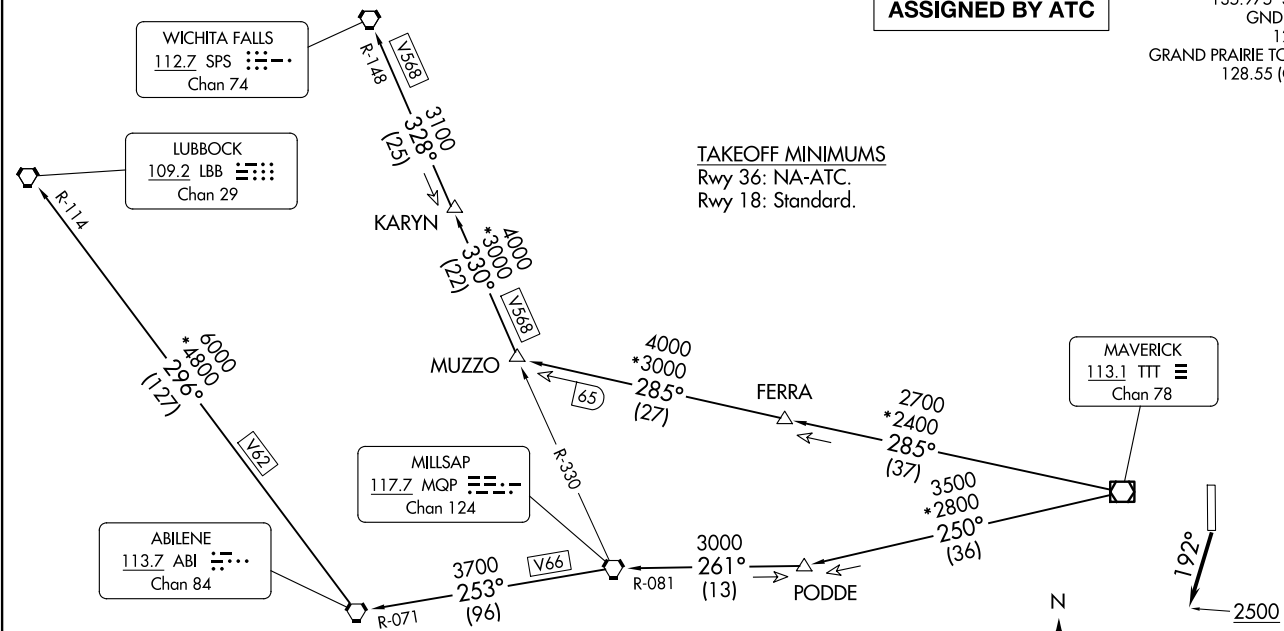
Rwy 36: NA-ATC.
Rwy 18: Standard.

KINGDOM FIVE DEPARTURE
(KING5.TTT) 17 APR 25

(KING5.TTT) 25107
KINGDOM FIVE DEPARTURE

AL-9209 (FAA)

GRAND PRAIRIE MUNI (GPM)
GRAND PRAIRIE, TEXAS



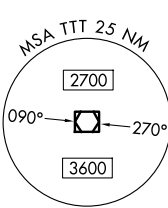
WICHITA FALLS
112.7 SPS
Chan 74

LUBBOCK
109.2 LBB
Chan 29

MILLSAP
117.7 MQP
Chan 124

ABILENE
113.7 ABI
Chan 84

MAVERICK
113.1 TTT
Chan 78



- NOTE: LUBBOCK Transition: For all aircraft overflying the MQP VORTAC westbound or direct.
- NOTE: MILLSAP Transition: For all aircraft overflying the MQP VORTAC westbound or direct.
- NOTE: PODDE Transition: ATC assigned.
- NOTE: WICHITA FALLS Transition: For all aircraft landing within the Wichita Falls terminal area or overflying the SPS VORTAC.
- NOTE: For all aircraft requesting 17000 and below.

NOTE: Chart not to scale.

(CONTINUED ON FOLLOWING PAGE)

GRAND PRAIRIE, TEXAS
GRAND PRAIRIE MUNI (GPM)

KINGDOM FIVE DEPARTURE



DEPARTURE ROUTE DESCRIPTION

TAKEOFF RUNWAY 18: Climb on heading 192° to 2500 before proceeding on course.

When entering controlled airspace, fly assigned heading for RADAR vectors to appropriate route. Maintain ATC assigned altitude.

LUBBOCK TRANSITION (KING5.LBB): From over TTT VOR/DME on TTT R-250 to PODDE, then on MQP R-081 to MQP VORTAC, then on MQP R-253 and ABI R-071 to ABI VORTAC, then on ABI R-296 and LBB R-114 to LBB VORTAC.

MILLSAP TRANSITION (KING5.MQP): From over TTT VOR/DME on TTT R-250 to PODDE, then on MQP R-081 to MQP VORTAC.

PODDE TRANSITION (KING5.PODDE): From over TTT VOR/DME on TTT R-250 to PODDE.

WICHITA FALLS TRANSITION (KING5.SPS): From over TTT VOR/DME on TTT R-285 to MUZZO, then on MQP R-330 and SPS R-148 to KARYN, then on SPS R-148 to SPS VORTAC.

SC-2, 16 APR 2026 to 14 MAY 2026

SC-2, 16 APR 2026 to 14 MAY 2026