

KUSSO TWO DEPARTURE (RNAV)
(KUSSO2.KUSSO) 22JAN26

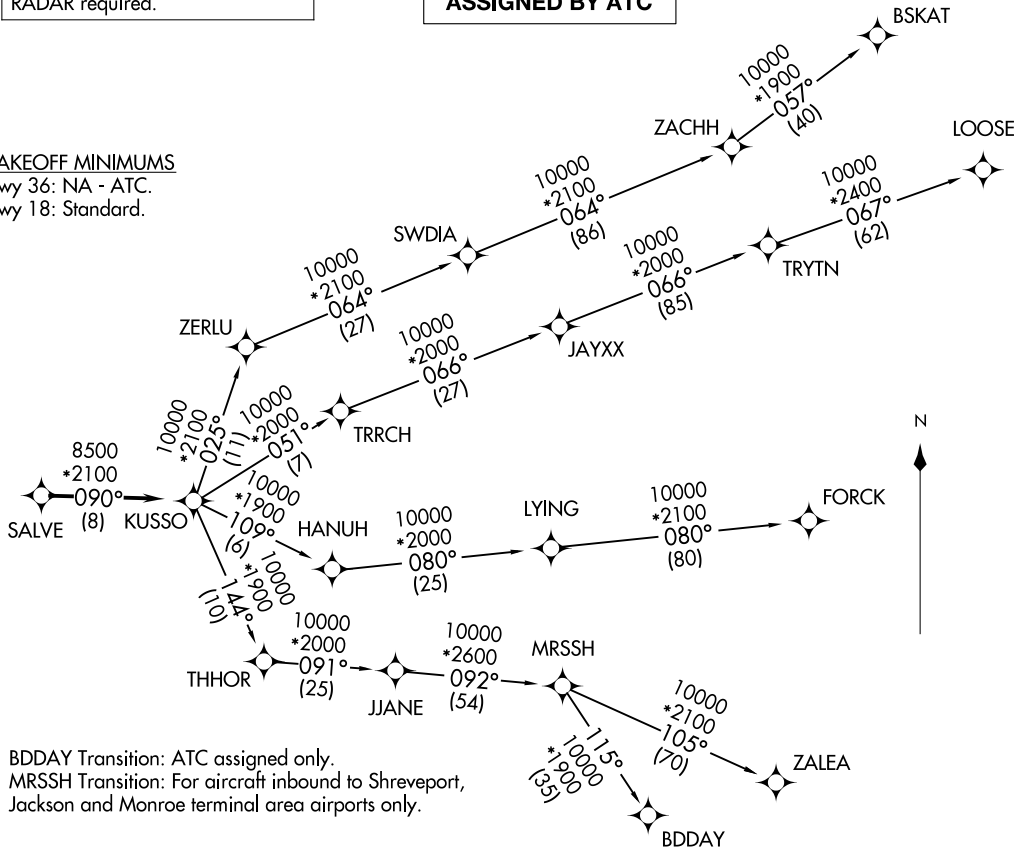
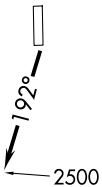
LONE STAR DEP CON
135.975 379.9
GND CON
121.15
GRAND PRAIRIE TOWER ★
128.55 (CTAF)

RNAV 1 - DME/DME/IRU or GPS.
RADAR required.

**TOP ALTITUDE:
ASSIGNED BY ATC**

TAKEOFF MINIMUMS

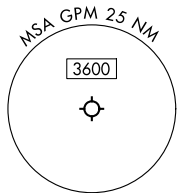
Rwy 36: NA - ATC.
Rwy 18: Standard.



NOTE: BDDAY Transition: ATC assigned only.
NOTE: MRSSH Transition: For aircraft inbound to Shreveport,
Jackson and Monroe terminal area airports only.

(CONTINUED ON FOLLOWING PAGE)

NOTE: Chart not to scale.



GRAND PRAIRIE, TEXAS
GRAND PRAIRIE MUNI (GPM)
(KUSSO2.KUSSO) 22JAN26

(KUSSO2.KUSSO) 26022
KUSSO TWO DEPARTURE (RNAV)

AL-9209 (FAA)

GRAND PRAIRIE MUNI (GPM)
GRAND PRAIRIE, TEXAS

KUSSO TWO DEPARTURE (RNAV)



DEPARTURE ROUTE DESCRIPTION

TAKEOFF RUNWAY 18: Climb on heading 192° to 2500 before proceeding on course.

When entering controlled airspace, fly heading assigned by ATC, expect vector to SALVE, then on track 090° to KUSSO, then on assigned transition. Maintain ATC assigned altitude, expect filed altitude 10 minutes after departure.

BDDAY TRANSITION (KUSSO2.BDDAY)

BSKAT TRANSITION (KUSSO2.BSKAT)

FORCK TRANSITION (KUSSO2.FORCK)

LOOSE TRANSITION (KUSSO2.LOOSE)

MRSSH TRANSITION (KUSSO2.MRSSH)

ZALEA TRANSITION (KUSSO2.ZALEA)

SC-2, 16 APR 2026 to 14 MAY 2026

SC-2, 16 APR 2026 to 14 MAY 2026