

APP CRS	Rwy Ldg	4001
357°	TDZE	588
	Apt Elev	590

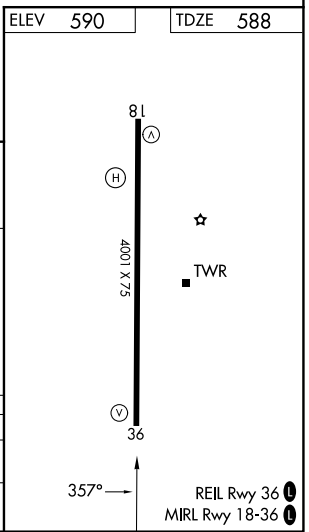
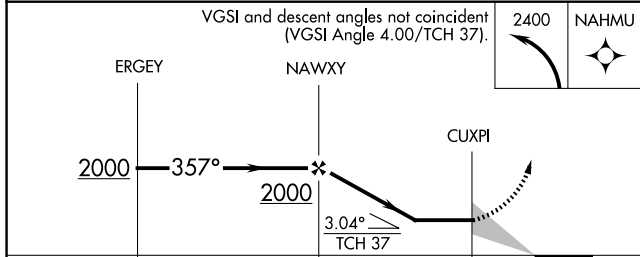
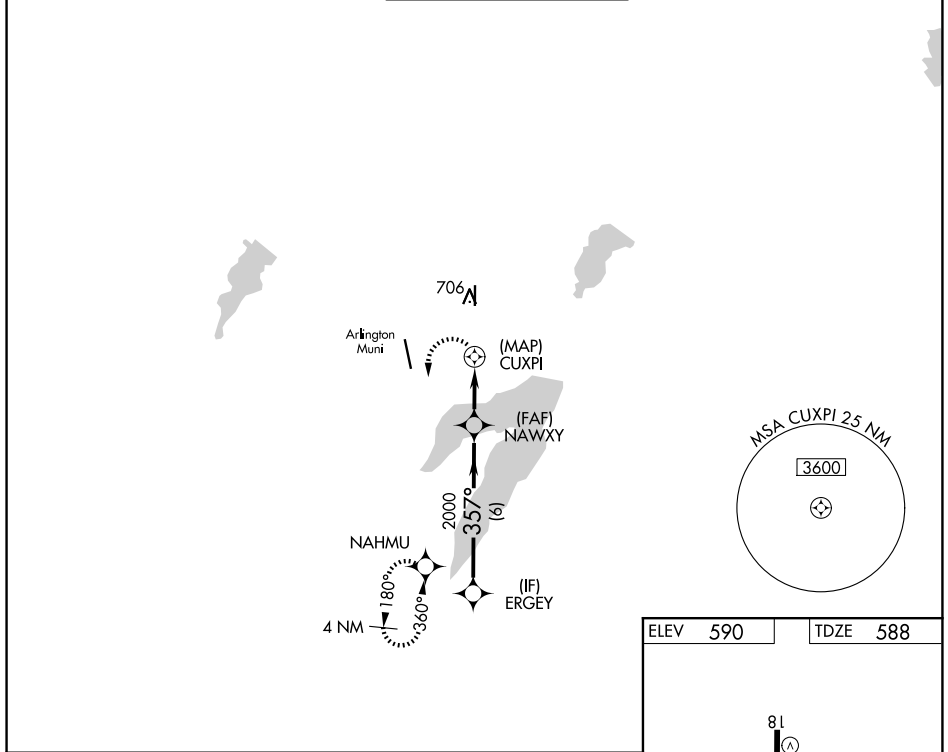
AL-9209 (FAA)

RNAV (GPS) RWY 36

GRAND PRAIRIE MUNI (GPM)

RADAR required. RNP APCH - GPS.		MISSED APPROACH: Climbing left turn to 2400 direct NAHMU and hold.
∇ ▲	Circling Rwy 18 NA at night.	

AWOS-3P 118.475	LONE STAR APP CON 135.975 379.9	GRAND PRAIRIE TOWER ★ 128.55 (CTAF) 0	GND CON 121.15	UNICOM 123.075
---------------------------	---	--	--------------------------	--------------------------



CATEGORY	A	B	C	D
LNVA MDA	1020-2½	432 (500-2½)		NA
CIRCLING	1100-2½ 510 (600-2½)	1280-2½ 690 (700-2½)		NA

SC-2, 16 APR 2026 to 14 MAY 2026

SC-2, 16 APR 2026 to 14 MAY 2026