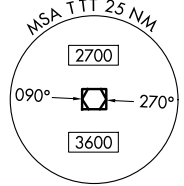


RADAR and DME required.

**TOP ALTITUDE:
ASSIGNED BY ATC**

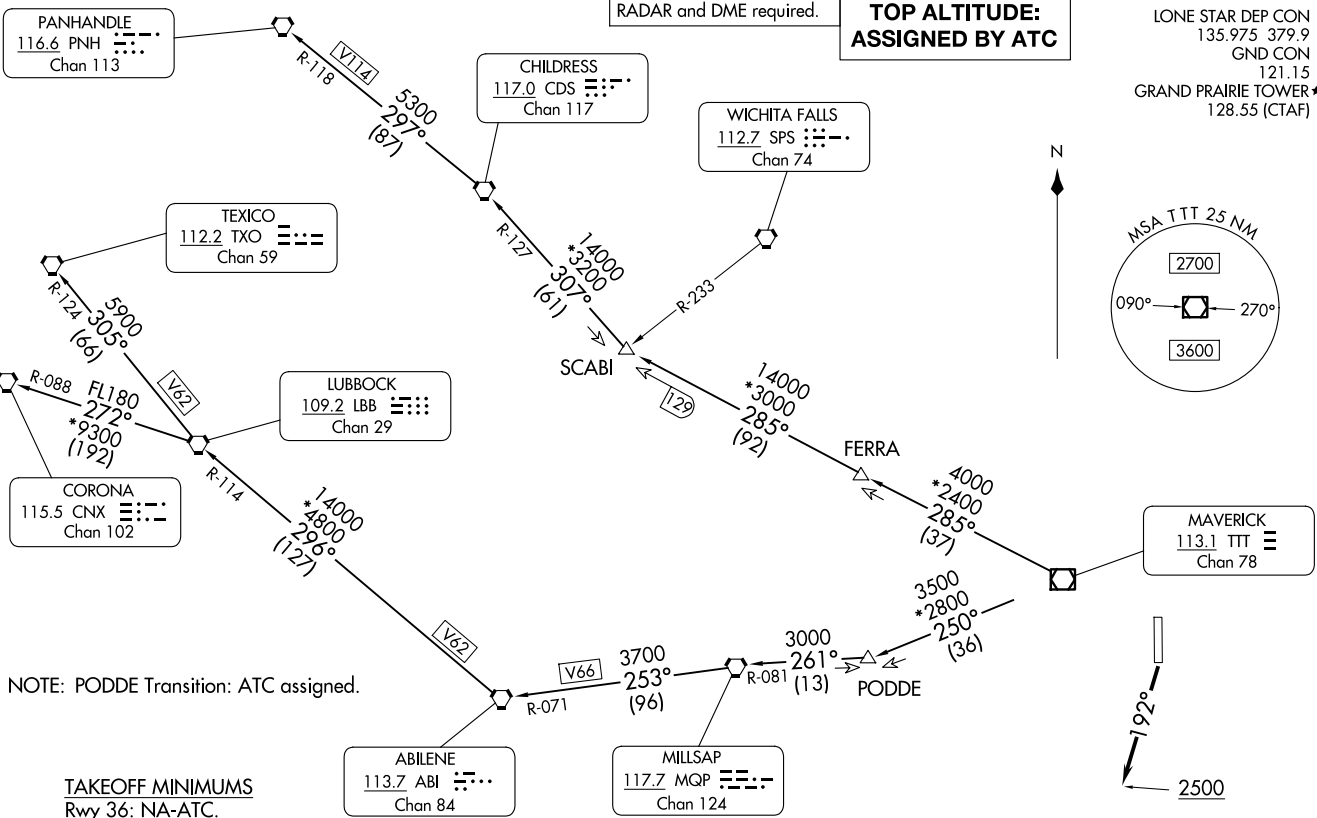
LONE STAR DEP CON
135.975 379.9
GND CON
121.15
GRAND PRAIRIE TOWER★
128.55 (CTAF)



(WORTH1.TTT) 24305
WORTH ONE DEPARTURE

AL-9209 (FAA)

GRAND PRAIRIE MUNI (GPM)
GRAND PRAIRIE, TEXAS



NOTE: PODDE Transition: ATC assigned.

TAKEOFF MINIMUMS
Rwy 36: NA-ATC.
Rwy 18: Standard.

(CONTINUED ON FOLLOWING PAGE)

NOTE: Chart not to scale.

WORTH ONE DEPARTURE
(WORTH1.TTT) 251AN24

GRAND PRAIRIE, TEXAS
GRAND PRAIRIE MUNI (GPM)

WORTH ONE DEPARTURE



DEPARTURE ROUTE DESCRIPTION

TAKEOFF RUNWAY 18: Climb on heading 192° to 2500 before proceeding on course.

When entering controlled airspace, fly assigned heading for RADAR vectors to appropriate route. Maintain ATC assigned altitude.

ABILENE TRANSITION (WORTH1.ABI): From over TTT VOR/DME on TTT R-250 to PODDE, then on MQP R-081 to MQP VORTAC, then on MQP R-253 and ABI R-071 to ABI VORTAC.

CHILDRESS TRANSITION (WORTH1.CDS): From over TTT VOR/DME on TTT R-285 to SCABI, then on CDS R-127 to CDS VORTAC.

CORONA TRANSITION (WORTH1.CNX): From over TTT VOR/DME on TTT R-250 to PODDE, then on MQP R-081 to MQP VORTAC, then on MQP R-253 and ABI R-071 to ABI VORTAC, then on ABI R-296 and LBB R-114 to LBB VORTAC, then on LBB R-272 and CNX R-088 to CNX VORTAC.

LUBBOCK TRANSITION (WORTH1.LBB): From over TTT VOR/DME on TTT R-250 to PODDE, then on MQP R-081 to MQP VORTAC, then on MQP R-253 and ABI R-071 to ABI VORTAC, then on ABI R-296 and LBB R-114 to LBB VORTAC.

PANHANDLE TRANSITION (WORTH1.PNH): From over TTT VOR/DME on TTT R-285 to SCABI, then on CDS R-127 to CDS VORTAC, then on CDS R-297 and PNH R-118 to PNH VORTAC.

PODDE TRANSITION (WORTH1.PODDE): From over TTT VOR/DME on TTT R-250 to PODDE.

TEXICO TRANSITION (WORTH1.TXO): From over TTT VOR/DME on TTT R-250 to PODDE, then on MQP R-081 to MQP VORTAC, then on MQP R-253 and ABI R-071 to ABI VORTAC, then on ABI R-296 and LBB R-114 to LBB VORTAC, then on LBB R-305 and TXO R-124 to TXO VORTAC.

SC-2, 16 APR 2026 to 14 MAY 2026

SC-2, 16 APR 2026 to 14 MAY 2026