

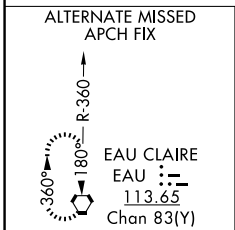
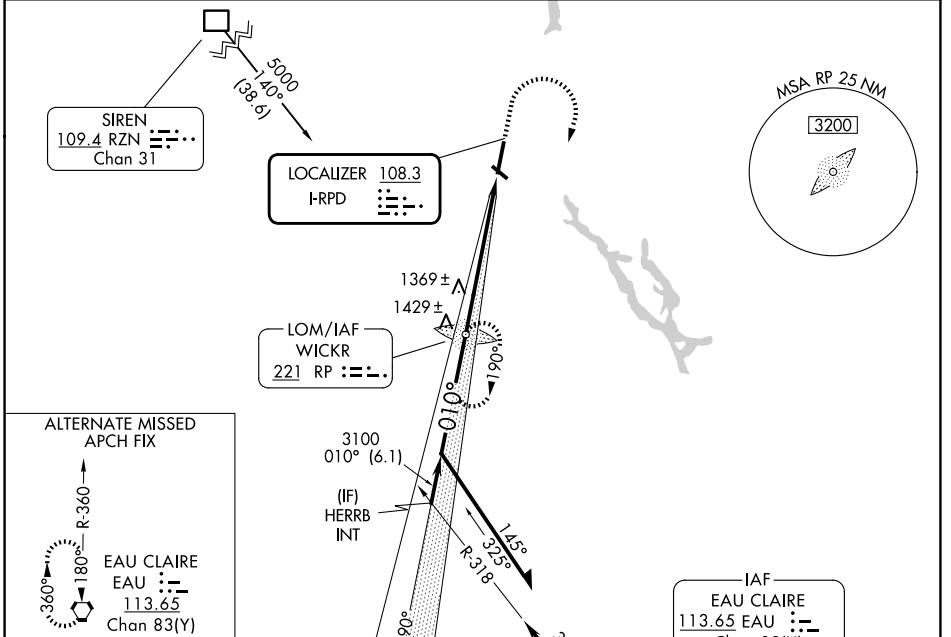
LOC I-RPD 108.3	APP CRS 010°	Rwy Ldg TDZE Apt Elev	6500 1102 1109
---------------------------	------------------------	-----------------------------	---

ILS or LOC RWY 1

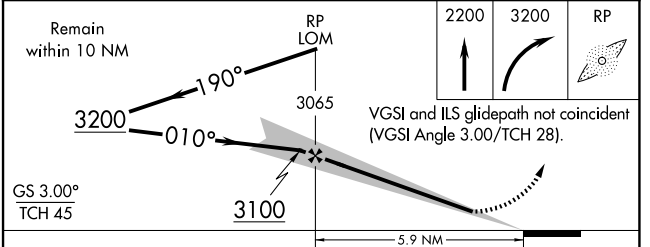
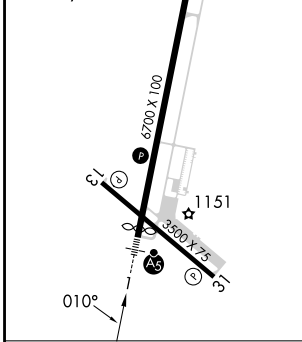
RICE LAKE RGNL/CARL'S FLD (RPD)

ADF required. From RZN DME: RNAV 1-GPS required.	MALSR AS	MISSED APPROACH: Climb to 2200 then climbing right turn to 3200 direct WICKR LOM and hold.
<p>Circling Rwy 13, 31 NA at night.</p>		

AWOS-3 120.525	MINNEAPOLIS CENTER 125.3 335.6	UNICOM 122.7 (CTAF)
--------------------------	--	-------------------------------



ELEV 1109	TDZE 1102
REIL Rwy 13, 31	
REIL Rwy 19	
HIRL Rwy 1-19	
MIRL Rwy 13-31	



CATEGORY	A	B	C	D
S-ILS 1	1302-1/2		200 (200-1/2)	
S-LOC 1	1620-1/2	518 (600-1/2)	1620-1 518 (600-1)	1620-1 1/4 518 (600-1 1/4)
CIRCLING	1620-1 511 (600-1)	1740-1 631 (700-1)	1740-1 3/4 631 (700-1 3/4)	1940-2 3/4 831 (900-2 3/4)

FAF to MAP 5.9 NM					
Knots	60	90	120	150	180
Min:Sec	5:54	3:56	2:57	2:22	1:58

EC-3, 16 APR 2026 to 14 MAY 2026

EC-3, 16 APR 2026 to 14 MAY 2026