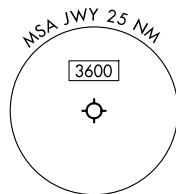


RNAV 1 - DME/DME/IRU or GPS required.  
RADAR required for non-GPS equipped aircraft.

LONE STAR DEP CON  
125.2 343.65  
CTAF  
122.975

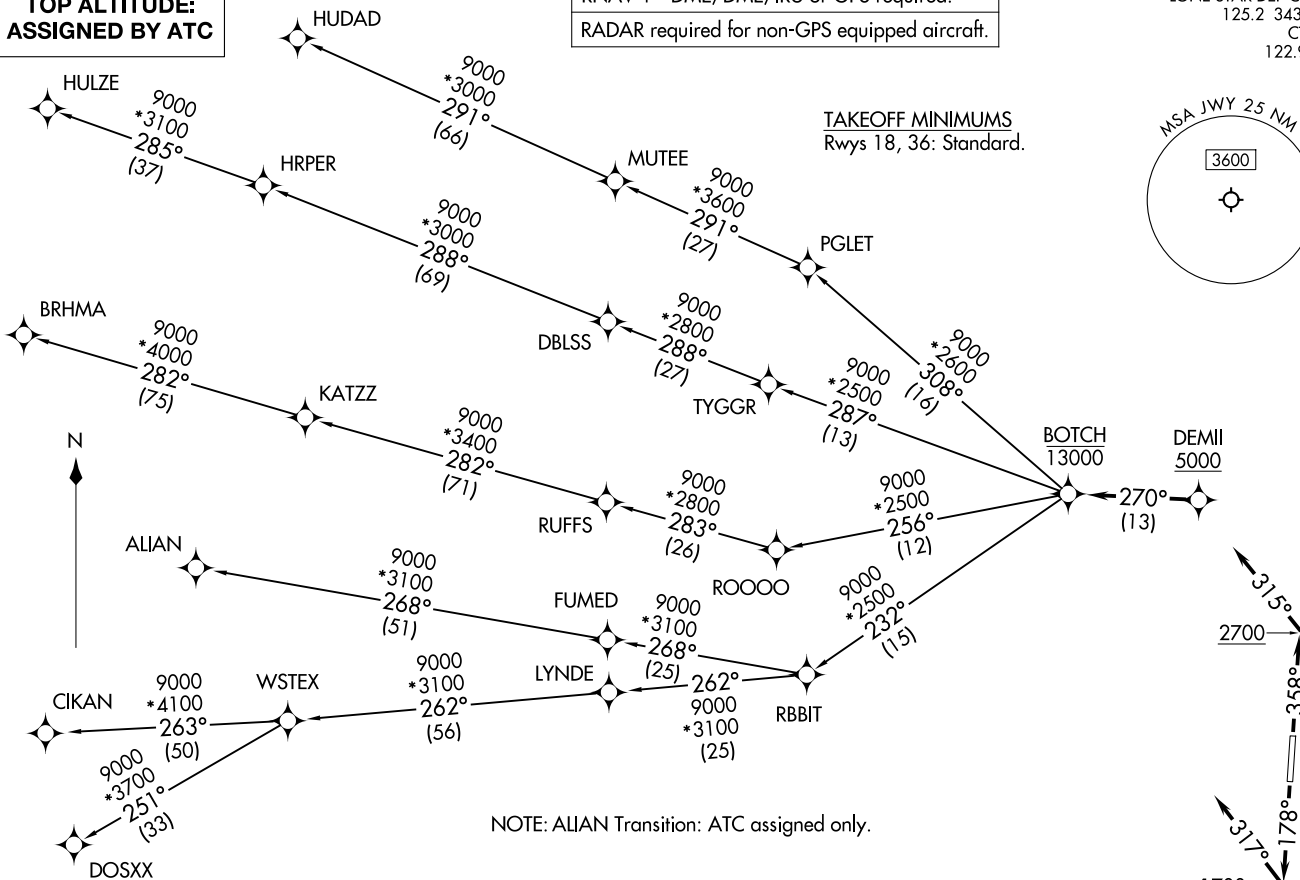
TAKEOFF MINIMUMS  
Rwys 18, 36: Standard.



TOP ALTITUDE:  
ASSIGNED BY ATC

BOTCH ONE DEPARTURE (RNAV)  
(BOTCH1 .BOTCH) 17ZAPR25

(BOTCH1 .BOTCH) 25107  
AL-9212 (FAA)



NOTE: ALIAN Transition: ATC assigned only.

(CONTINUED ON FOLLOWING PAGE)

NOTE: Chart not to scale.

MIDLOTHIAN/WAXAHACHIE, TEXAS  
MID-WAY RGNL (JWY)

MID-WAY RGNL (JWY)  
MIDLOTHIAN/WAXAHACHIE, TEXAS

# BOTCH ONE DEPARTURE (RNAV)



## DEPARTURE ROUTE DESCRIPTION

TAKEOFF RUNWAY 18: Climb on heading 178° to 1700, then on heading 317° or as assigned by ATC, for vectors to cross DEMIL at or above 5000, thence. . .

TAKEOFF RUNWAY 36: Climb on heading 358° to 2700, then on heading 315° or as assigned by ATC, for vectors to cross DEMIL at or above 5000, thence. . .

. . . on track 270° to cross BOTCH at or below 13000, then on (transition). Maintain ATC assigned altitude, expect filed altitude 10 minutes after departure.

ALIAN TRANSITION (BOTCH1.ALIAN)

BRHMA TRANSITION (BOTCH1.BRHMA)

CIKAN TRANSITION (BOTCH1.CIKAN)

DOSXX TRANSITION (BOTCH1.DOSXX)

HUDAD TRANSITION (BOTCH1.HUDAD)

HULZE TRANSITION (BOTCH1.HULZE)

WSTEX TRANSITION (BOTCH1.WSTEX)

SC-2, 16 APR 2026 to 14 MAY 2026

SC-2, 16 APR 2026 to 14 MAY 2026