

GARLAND SIX DEPARTURE  
(GARL6.TT) 17APR25

MIDLOTHIAN/WAXAHACHIE, TEXAS  
MID-WAY RGNL (JWY)

LONE STAR DEP CON  
125.2 343.65  
CTAF  
122.975

**TOP ALTITUDE:  
ASSIGNED BY ATC**

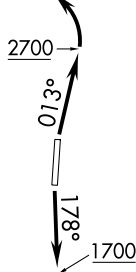
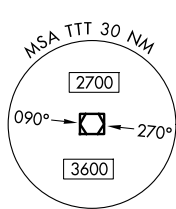
TAKEOFF MINIMUMS  
Rwys 18, 36: Standard.

RADAR and DME required.

NOTE: SOLDO Transition: ATC assigned.

NOTE: Chart not to scale.

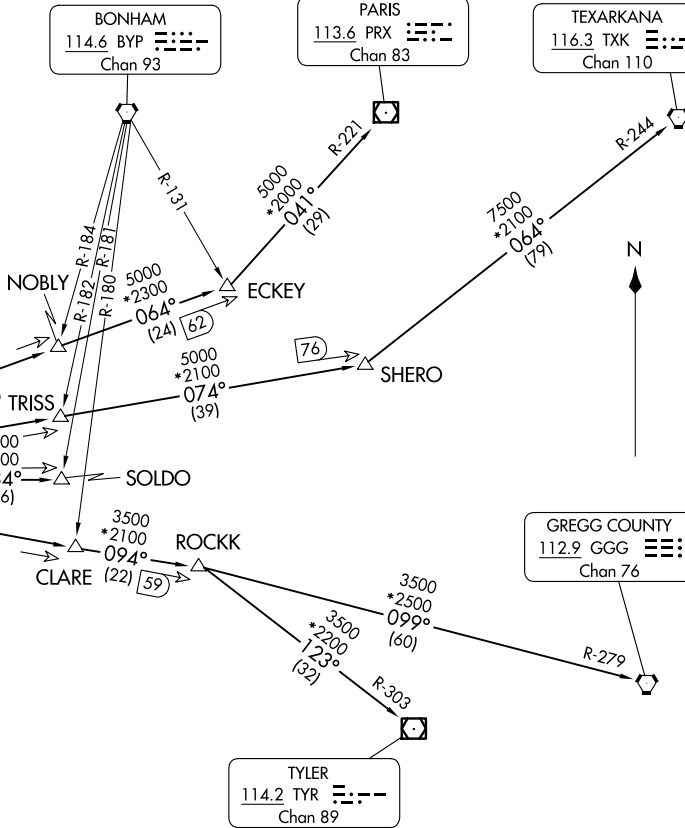
MAVERICK  
113.1 TTT  
Chan 78



BONHAM  
114.6 BYP  
Chan 93

PARIS  
113.6 PRX  
Chan 83

TEXARKANA  
116.3 TXK  
Chan 110



GREGG COUNTY  
112.9 GGG  
Chan 76

TYLER  
114.2 TYR  
Chan 89

(CONTINUED ON FOLLOWING PAGE)

(GARL6.TT) 25107  
GARLAND SIX DEPARTURE

AL-9212 (FAA)

MID-WAY RGNL (JWY)  
MIDLOTHIAN/WAXAHACHIE, TEXAS

# GARLAND SIX DEPARTURE



## DEPARTURE ROUTE DESCRIPTION

TAKEOFF RUNWAY 18: Climb on heading 178° to 1700 before proceeding northbound.

TAKEOFF RUNWAY 36: Climb on heading 013° to 2700 before turning left.

When entering controlled airspace, fly assigned heading for RADAR vectors to appropriate route. Maintain ATC assigned altitude.

GREGG COUNTY TRANSITION (GARL6.GGG): From over TTT VOR/DME on TTT R-094 to ROCKK, then on GGG R-279 to GGG VORTAC.

PARIS TRANSITION (GARL6.PRX): From over TTT VOR/DME on TTT R-064 to ECKEY, then on PRX R-221 to PRX VOR/DME.

SOLDO TRANSITION (GARL6.SOLDO): From over TTT VOR/DME on TTT R-084 to SOLDO.

TEXARKANA TRANSITION (GARL6.TXK): From over TTT VOR/DME on TTT R-074 to SHERO, then on TXK R-244 to TXK VORTAC.

TYLER TRANSITION (GARL6.TYR): From over TTT VOR/DME on TTT R-094 to ROCKK, then on TYR R-303 to TYR VOR/DME.

SC-2, 16 APR 2026 to 14 MAY 2026

SC-2, 16 APR 2026 to 14 MAY 2026