

WAAS CH <b>70516</b> <b>W12A</b>	APP CRS <b>116°</b>	Rwy Ldg <b>5368</b> TDZE <b>16</b> Apt Elev <b>16</b>
--	------------------------	---

# RNAV (GPS) RWY 12

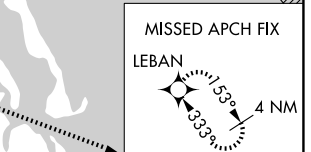
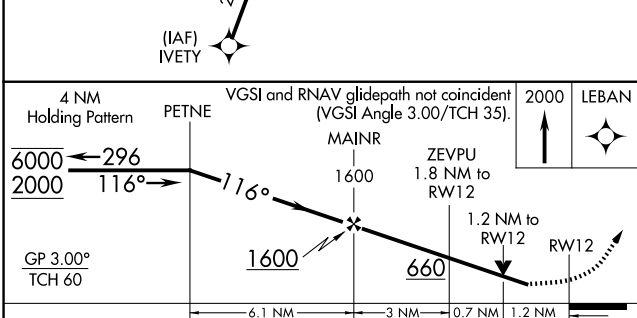
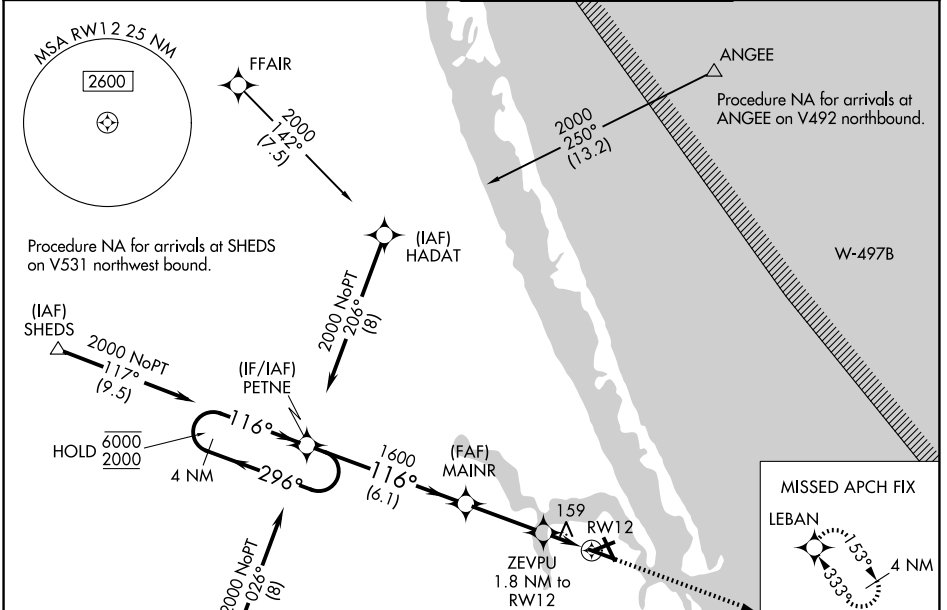
WITHAM FLD (SUA)

RNP APCH - GPS.

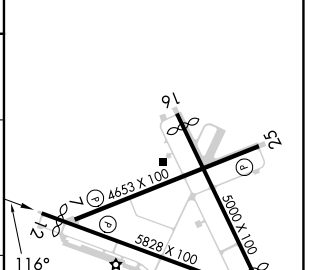
**⚠** Rwy 12 helicopter visibility reduction below 3/4 SM NA. Circling Rwy 7 NA at night.  
For uncompensated Baro-VNAV systems, LNAV/VNAV NA below -15°C or above 54°C.

MISSED APPROACH: Climb to 2000 direct LEBAN and hold.

ATIS <b>134.475</b>	PALM BEACH APP CON <b>132.8</b>	STUART TOWER * <b>126.6 (CTAF) 0</b>	GND CON <b>121.7</b>
------------------------	------------------------------------	---	-------------------------



ELEV 16	<b>D</b> TDZE 16
---------	------------------



CATEGORY	A	B	C	D
LPV DA		271-7/8	255 (300-7/8)	
LNAV/VNAV DA		420-1 1/8	404 (500-1 1/8)	
LNAV MDA	420-1	404 (500-1)	420-1 1/8	404 (500-1 1/8)
CIRCLING	480-1	464 (500-1)	680-1 1/4 664 (700-1 3/4)	680-2 664 (700-2)

REIL Rwy 12-30 **0**  
MIRL Rwy 12-30 and 7-25 **0**

SE-3, 16 APR 2026 to 14 MAY 2026

SE-3, 16 APR 2026 to 14 MAY 2026