

RNAV 1 - DME/DME/IRU or GPS.  
RADAR required.

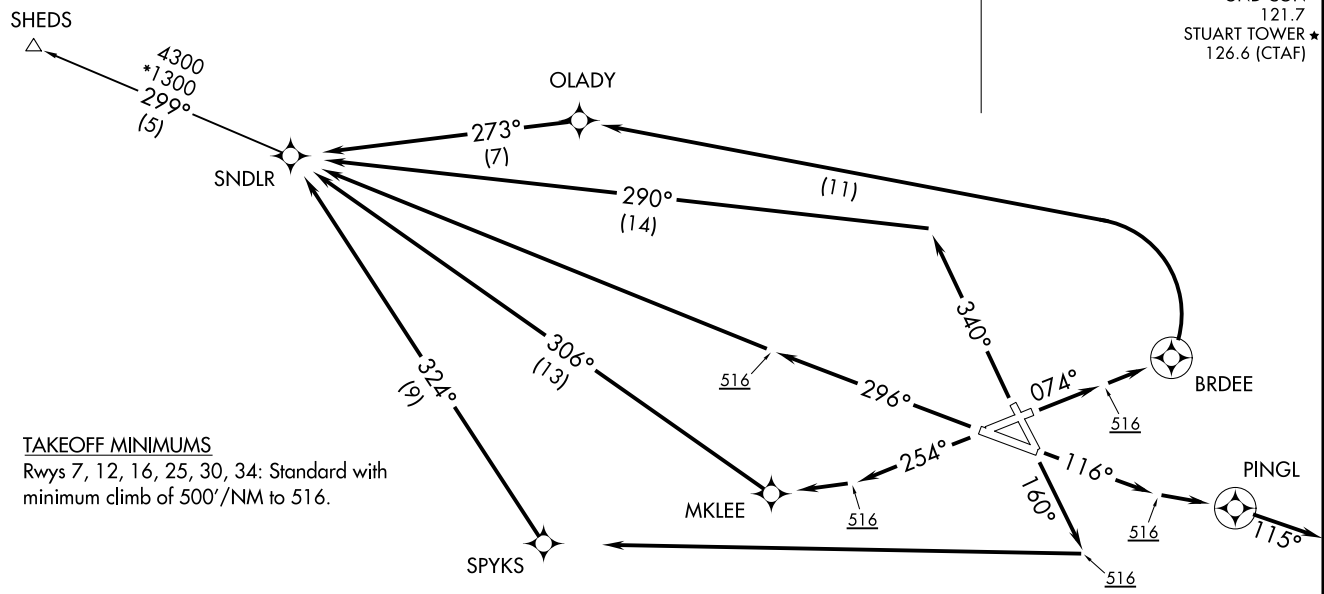
**TOP ALTITUDE:  
3000**

PALM BEACH DEP CON 123.625  
ATIS 134.475  
GND CON 121.7  
STUART TOWER ★ 126.6 (CTAF)

SNDLR THREE DEPARTURE (RNAV)  
(SNDLR3:SNDLR) 12JUN25

(SNDLR3:SNDLR) 25163  
AL-9217 (FAA)

WITHAM FLD (SUA)  
STUART, FLORIDA

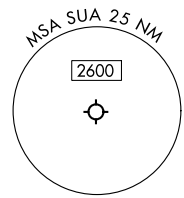


**TAKEOFF MINIMUMS**  
Rwys 7, 12, 16, 25, 30, 34: Standard with minimum climb of 500'/NM to 516.

NOTE: Jet and turboprop aircraft only.  
NOTE: Transponder code will be issued via SUA ground control or PBI APP CON when tower closed.

NOTE: Chart not to scale.

(CONTINUED ON FOLLOWING PAGE)



STUART, FLORIDA  
WITHAM FLD (SUA)

# SNDLR THREE DEPARTURE (RNAV)



## DEPARTURE ROUTE DESCRIPTION

TAKEOFF RUNWAY 7: Climb on heading 074° to 516, then direct BRDEE, then left turn direct OLADY, then on track 273° to SNDLR, thence. . . .

TAKEOFF RUNWAY 12: Climb on heading 116° to 516, then direct PINGL, then on heading 115° or as assigned by ATC, for vectors to SNDLR, thence. . . .

TAKEOFF RUNWAY 16: Climb on heading 160° to 516, then right turn direct SPYKS, then on track 324° to SNDLR, thence. . . .

TAKEOFF RUNWAY 25: Climb on heading 254° to 516, then direct MKLEE, then on track 306° to SNDLR, thence. . . .

TAKEOFF RUNWAY 30: Climb on heading 296° to 516, then direct SNDLR, thence. . . .

TAKEOFF RUNWAY 34: Climb on heading 340° to intercept course 290° to SNDLR, thence. . . .

. . . .on SHEDS transition, maintain 3000. Expect clearance to filed altitude within 10 minutes after departure.

ALL AIRCRAFT: CLIMB GRADIENTS: If unable to accept climb rate, advise ATC prior to departure. All Runways 500'/NM to 516.

SHEDS TRANSITION (SNDLR3.SHEDS)

SE-3, 16 APR 2026 to 14 MAY 2026

SE-3, 16 APR 2026 to 14 MAY 2026