

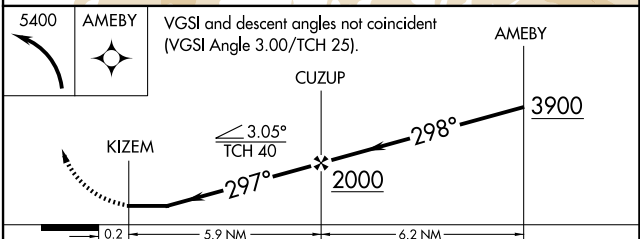
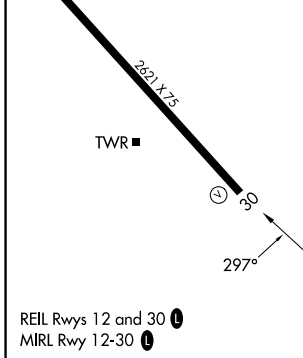
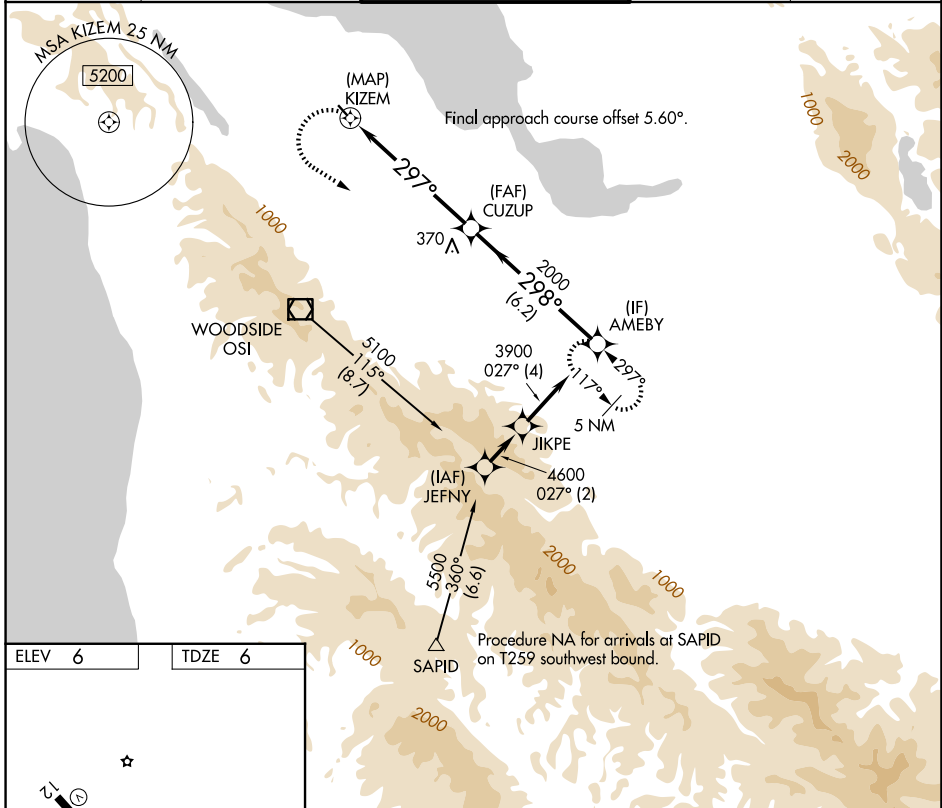
APP CRS 297°	Rwy Ldg TDZE Apt Elev	2621 6 6
------------------------	-----------------------------	-------------------------------------

RNAV (GPS) Y RWY 30

SAN CARLOS (SQL)

RNP APCH - GPS.		MISSED APPROACH: Climbing left turn to 5400 direct AMEBY and hold, continue climb-in-hold to 5400.		
<p>⚠ When Circling to Rwy 12 at night, operational VGSi required, remain on or above VGSi glidepath until threshold. Rwy 30 helicopter visibility reduction below 1 SM NA. Circling NA west of Rwy 12-30.</p>				

ATIS 125.9	NORCAL APP CON 133.95 317.6	SAN CARLOS TOWER ★ 119.0 (CTAF) 0 326.2	GND CON 121.6	UNICOM 122.95
----------------------	---------------------------------------	---	-------------------------	-------------------------



CATEGORY	A	B	C	D
LNAV MDA	1260-1¼ 1254 (1300-1¼)	1260-1½ 1254 (1300-1½)		NA
CIRCLING	1260-1¼ 1254 (1300-1¼)	1260-1½ 1254 (1300-1½)		NA