

LOC/DME I-JFZ 109.75 Chan 34 (Y)	APP CRS 252°	Rwy Ldg TDZE Apt Elev	4299 2653 2653
---	------------------------	-----------------------------	---

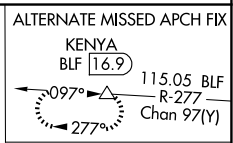
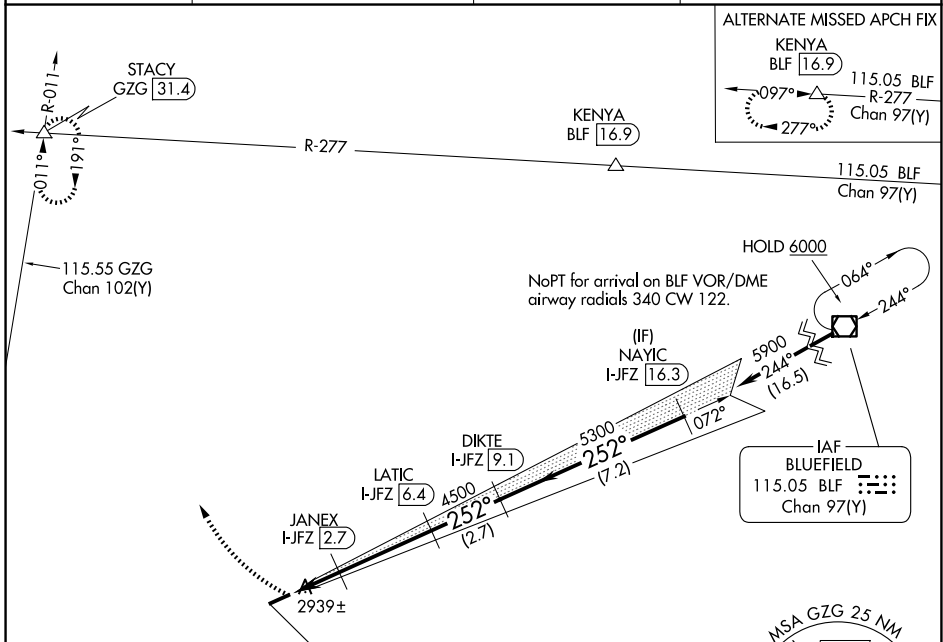
LOC/DME RWY 25

TAZEWELL COUNTY (JF'Z)

⚠ Visibility reduction by helicopters NA. When local altimeter setting not received use Wise altimeter setting and increase all MDA 100 feet, increase S-25 Cat C visibility ¼ mile and Circling Cat C visibility ⅓ mile. When VGSI inop, Straight-in/Circling Rwy 25 NA at night. When VGSI inop, Circling Rwy 7 NA at night. Circling NA for Cat C south of Rwy 7-25.

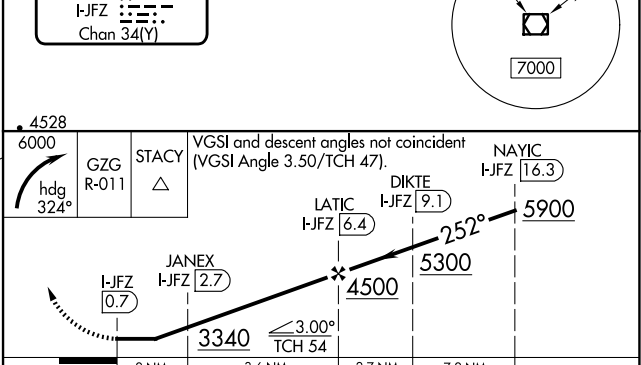
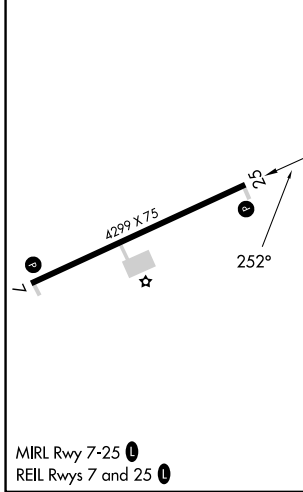
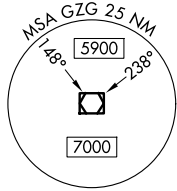
MISSED APPROACH: Climbing right turn to 6000 on heading 324° and GZG R-011 to STACY INT/GZG 31.4 DME and hold.

AWOS-3 118.075	ATLANTA CENTER 127.85 269.3	GCO 135.075	UNICOM 123.05 (CTAF) 0
--------------------------	---------------------------------------	-----------------------	----------------------------------



ELEV 2653	TDZE 2653
-----------	-----------

LOCALIZER 109.75
I-JFZ [109.75]
Chan 34(Y)



CATEGORY	A	B	C	D
S-25	3200-1	547 (600-1)	3200-1½ 547 (600-1½)	NA
CIRCLING	3240-1	587 (600-1)	3240-1½ 587 (600-1½)	NA

NE-3, 16 APR 2026 to 14 MAY 2026

NE-3, 16 APR 2026 to 14 MAY 2026